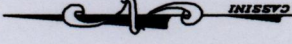


R.P.O. Vol. 11 Fol. 389
 C.T. Vol. 4127 Fol. 301

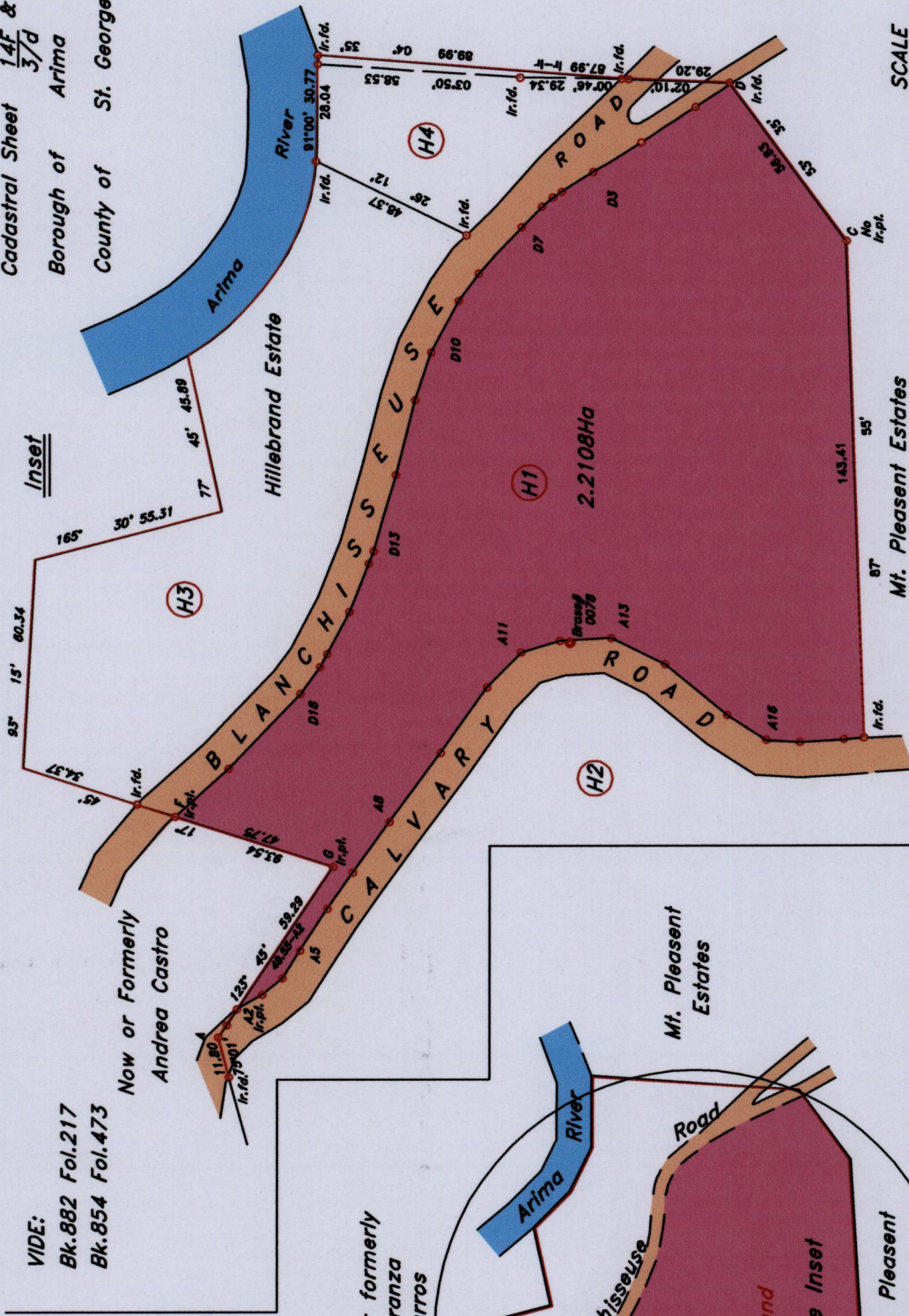
VIDE:
 Bk.882 Fol.217
 Bk.854 Fol.473

Cadastral Sheet 14F & 24C B.19.L.
 3/d
 Arima
 County of St. George



1656

35



SCALE 1 : 1750
 Distances are in metres.
 Bearings are Cassini Grid,
 based on Solar Observations.

PLAN of a Parcels of land coloured pink in the Borough of Arima
 Containing Two Point Two One Zero Eight Hectares.
 Surveyed d by me, with due authority in January 2011 for HILLEBRAND ESTATE
 Certified Correct in accordance with Regulation 25 (1) of the Land Surveyors
 Regulations 1998.

Checked by
 Entered on
 Trinidad and Tobago Land Surveyor 23rd April2015.

Now or formerly
 Andrea Castro

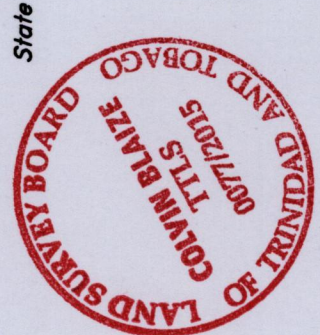
Now or formerly
 Andrea Castro

Now or formerly
 Esperanza Charros

Heirs of
 Hillebrand
 also known as
 Little San Pedro

Mt. Pleasant
 Estates

Mt. Pleasant
 Estates

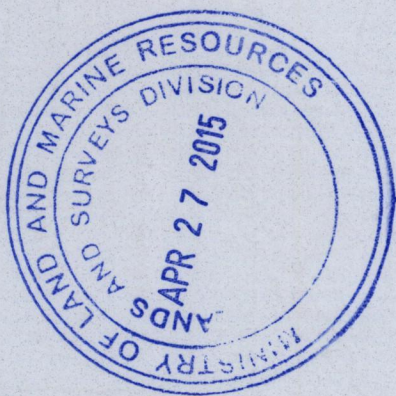


Approved
 Director of Surveys
 27/4/15

Brass# 0078: (0687242.928m E, 1178047.920m N)
 U.T.M. (NAPARIMA) Coordinate
 zone. 20 (Accuracy +/- 0.001m)

Scale 1:4000

STA	DIST.	BRG	STA
A	4.26	123 °	A1
A1	5.48	123 °	A2
A2	8.41	149 °	A3
A3	7.45	140 °	A4
A4	9.44	122 °	A5
A5	14.42	122 °	A6
A6	12.76	124 °	A7
A7	18.07	125 °	A8
A8	24.65	126 °	A9
A9	23.13	125 °	A10
A10	14.17	134 °	A11
A11	11.52	163 °	A12
A12	14.93	176 °	A13
A13	17.34	206 °	A14
A14	23.30	219 °	A15
A15	13.32	212 °	A16
A16	9.68	183 °	A17
A17	12.76	176 °	A18
A18	5.74	175 °	B
B	143.41	87 °	C
C	56.83	53 °	D
D	11.97	324 °	D1
D1	18.75	326 °	D2
D2	16.25	328 °	D3
D3	10.77	327 °	D4
D4	3.01	326 °	D5
D5	4.08	319 °	D6
D6	8.35	314 °	D7
D7	18.20	312 °	D8
D8	9.73	306 °	D9
D9	16.85	298 °	D10
D10	14.55	288 °	D11
D11	22.27	284 °	D12
D12	22.84	286 °	D13
D13	3.81	291 °	D14
D14	14.94	291 °	D15
D15	13.95	297 °	D16
D16	4.12	297 °	D17
D17	9.70	306 °	D18
D18	29.79	313 °	D19
D19	20.70	318 °	E
E	47.75	197 °	F
F	49.55	303 °	A2



1656/85