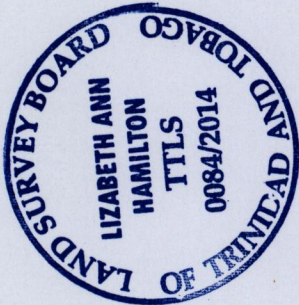


R.P.O. Vol. 73 fol. 459
 C.T. Vol. 5483 fol. 465

Ward of Tamana
 County of St. Andrew
 Cadastral Sheet E.1.K., 35B
 2/a



Approved
Lizabeth Ann Hamilton
 Director of Surveys 2-11-14

SCALE 1: 3500

o denotes Ir.pt. unless otherwise stated

Bearings are U.T.M. Grid based on Solar Observations

PLAN of 3 Parcels of land coloured pink in the Ward of Tamana
 Containing together four point zero four zero eight hectares

Surveyed by me, with due authority, in June 2010

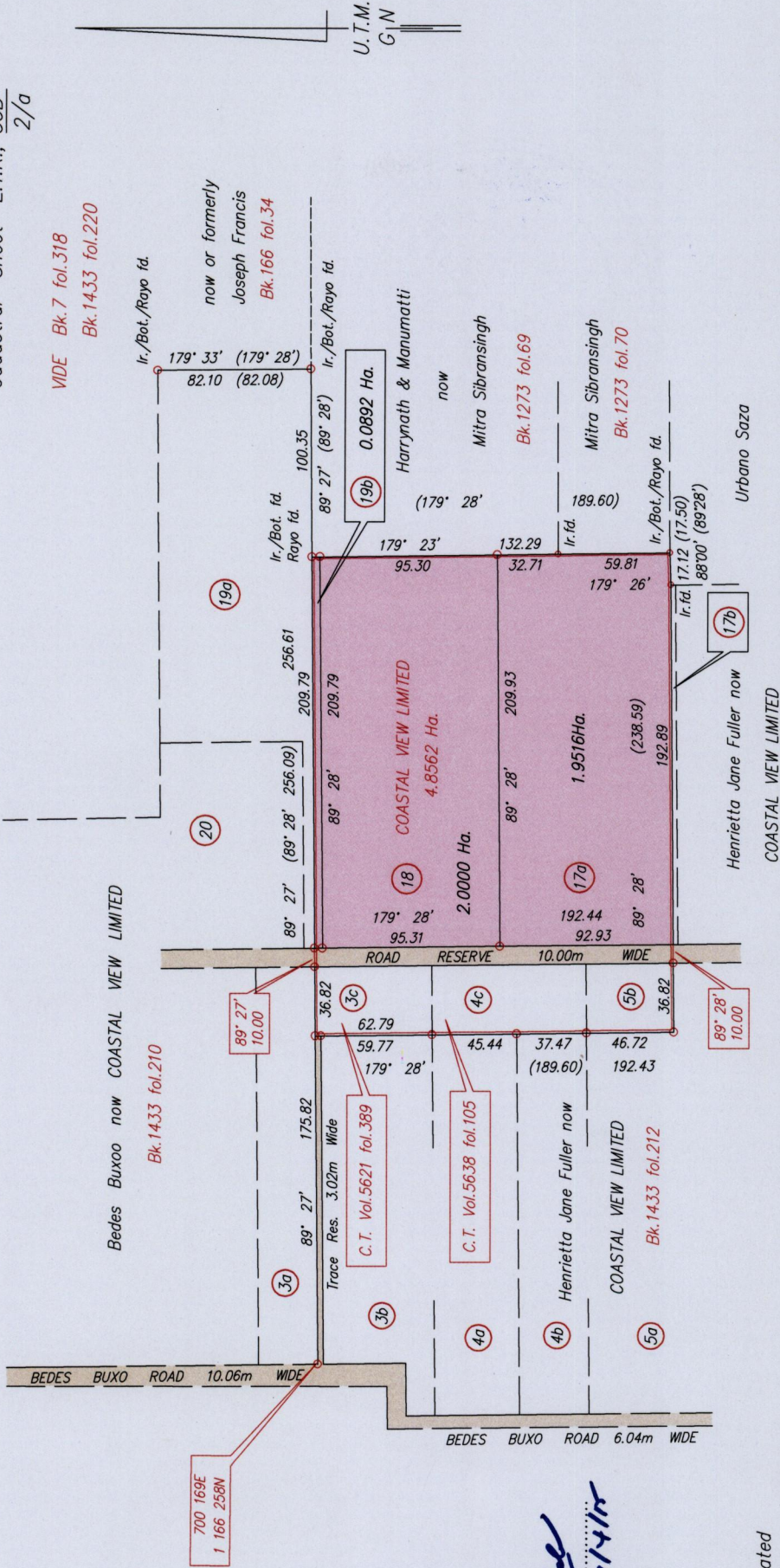
Certified Correct in accordance with Regulation 25(1) of the Land Surveyors Regulations 1998.

Checked by *M.M. 10/14/2015*

Entered

Lizabeth Ann Hamilton
 Trinidad & Tobago Land Surveyor
 December 29

2014



Distances are in metres

Co-ordinates are U.T.M. Zone 20 Naparima Datum +/-5m
 obtained from handheld G.P.S.

Plots 19a and 19b to be amalgamated
 Plots 17a and 17b to be amalgamated



1656

31

15681

18/9591

18

add

