

1656/8
1656

{ }

C.T. Vol. 5248

Fol. 217

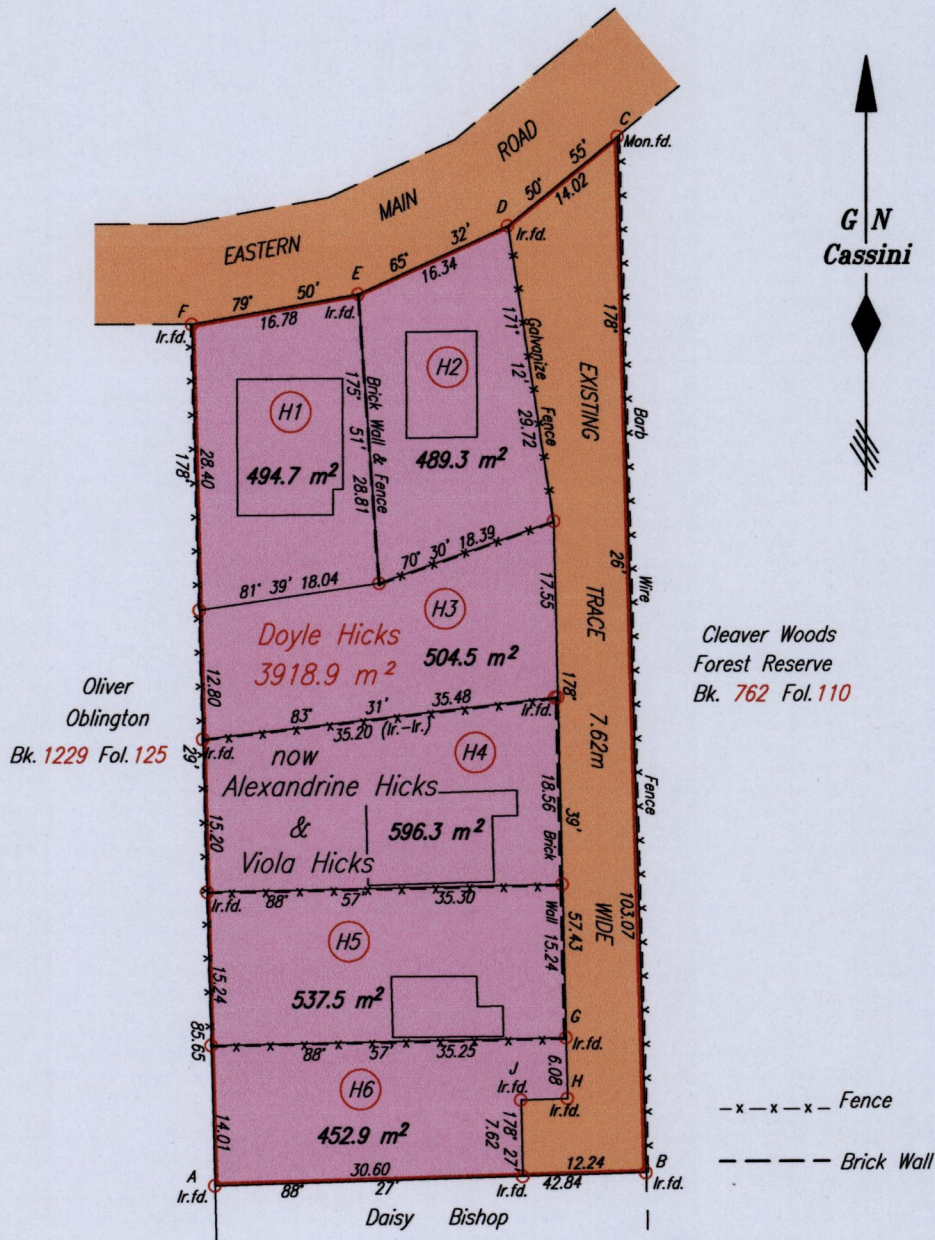
Cadastral Sheet B.24.C, 24C
1/c

Borough of Arima

County of St. George

CLEAVER WOODS - D'Abadie

Bk. 1438 Fol. 118



Cleaver Woods Forest Reserve
Bk. 762 Fol. 110

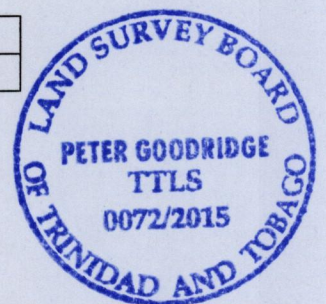
Oliver Oblington
Bk. 1229 Fol. 125

-x-x-x- Fence
- - - - - Brick Wall

LEGEND

From	To	Bearing	Distance
H	J	268° 27'	4.64

Coordinates of D (I.r.f.d.): 0685866mE, 1175533mN
U.T.M. 20 WGS 84 (+/- 7.00m)
G.P.S. Direct Observation



Approved
Director of Surveys 29/1/15

SCALE 1: 750

Distances are in METRES

○ Denotes Iron put except where otherwise stated

Bearings are Cassini Grid based on Solar Observations

PLAN of 6 Parcels of land coloured pink in the Borough of Arima

Containing together three thousand and seventy five point two square metres

Surveyed by me, with due authority in September 2013

Certified Correct in accordance with Regulation 25 (1) of The Land Surveyors Regulations 1998,

Checked by

TTLS

Entered on

Trinidad & Tobago Land Surveyor 2015
C:\LESS 2014\TRINIDAD\HICKS,VIOLA\CLEAVER WOODS.D'ABADIE.dwg. FILE NO.: H004



1656/8