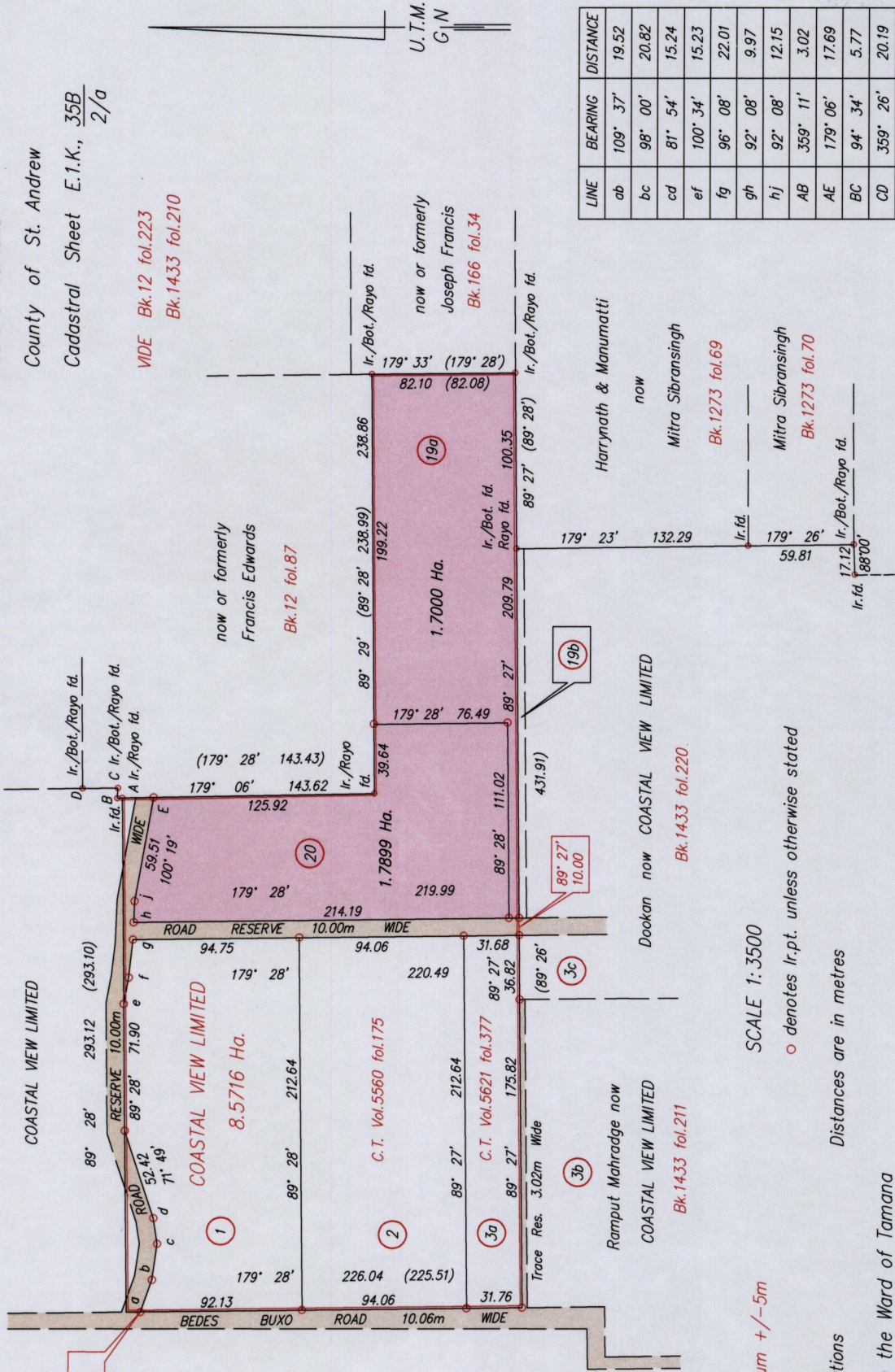


R.P.O. Vol. 94 fol. 503
C.T. Vol. 5483 fol. 467

Ward of Tamana
County of St. Andrew
Cadastral Sheet E.1.K., 35B
2/a



Approved
Laurel
Director of Surveys
21/4/15

Co-ordinates are U.T.M. Zone 20 Naparima Datum +/-5m
obtained from handheld G.P.S.

Bearings are U.T.M. Grid based on Solar Observations

PLAN of 2 Parcels of land coloured pink in the Ward of Tamana
Containing together three point four eight nine nine hectares

Surveyed by me, with due authority, in June 2010

Certified Correct in accordance with Regulation 25(1) of the Land Surveyors Regulations 1998.

Checked by *mm. 10/4/2015*

Elizabeth Ann Hamilton

Entered
Trinidad & Tobago Land Surveyor 29 December 2014

SCALE 1:3500
o denotes Ir.pt. unless otherwise stated

Distances are in metres



Plots 19a and 19b to be amalgamated

1656/79
1656

79

LINE	BEARING	DISTANCE
ab	109° 37'	19.52
bc	98° 00'	20.82
cd	81° 54'	15.24
ef	100° 34'	15.23
fg	96° 08'	22.01
gh	92° 08'	9.97
hj	92° 08'	12.15
AB	359° 11'	3.02
AE	179° 06'	17.69
BC	94° 34'	5.77
CD	359° 26'	20.19

1656/79



8001

