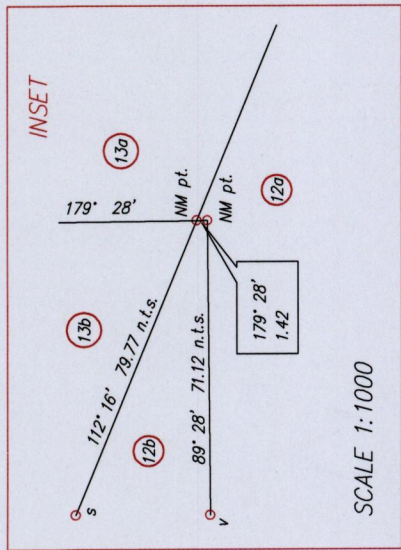


Ward of Tamana  
County of St. Andrew  
Cadastral Sheet E.I.K., 35B  
2/a

R.P.O. Vol. 493B fol. 253  
C.T. Vol. 5367 fol. 457

WIDE Bk.210 fol.45  
Bk.1433 fol.215



Approved  
.....  
Director of Surveys 2-14/15

SCALE 1: 3500  
o denotes Ir.pt. unless otherwise stated  
Distances are in metres

Bearings are Cassini Grid based on Solar Observations

PLAN of 4 Parcels of land coloured pink in the Ward of Tamana

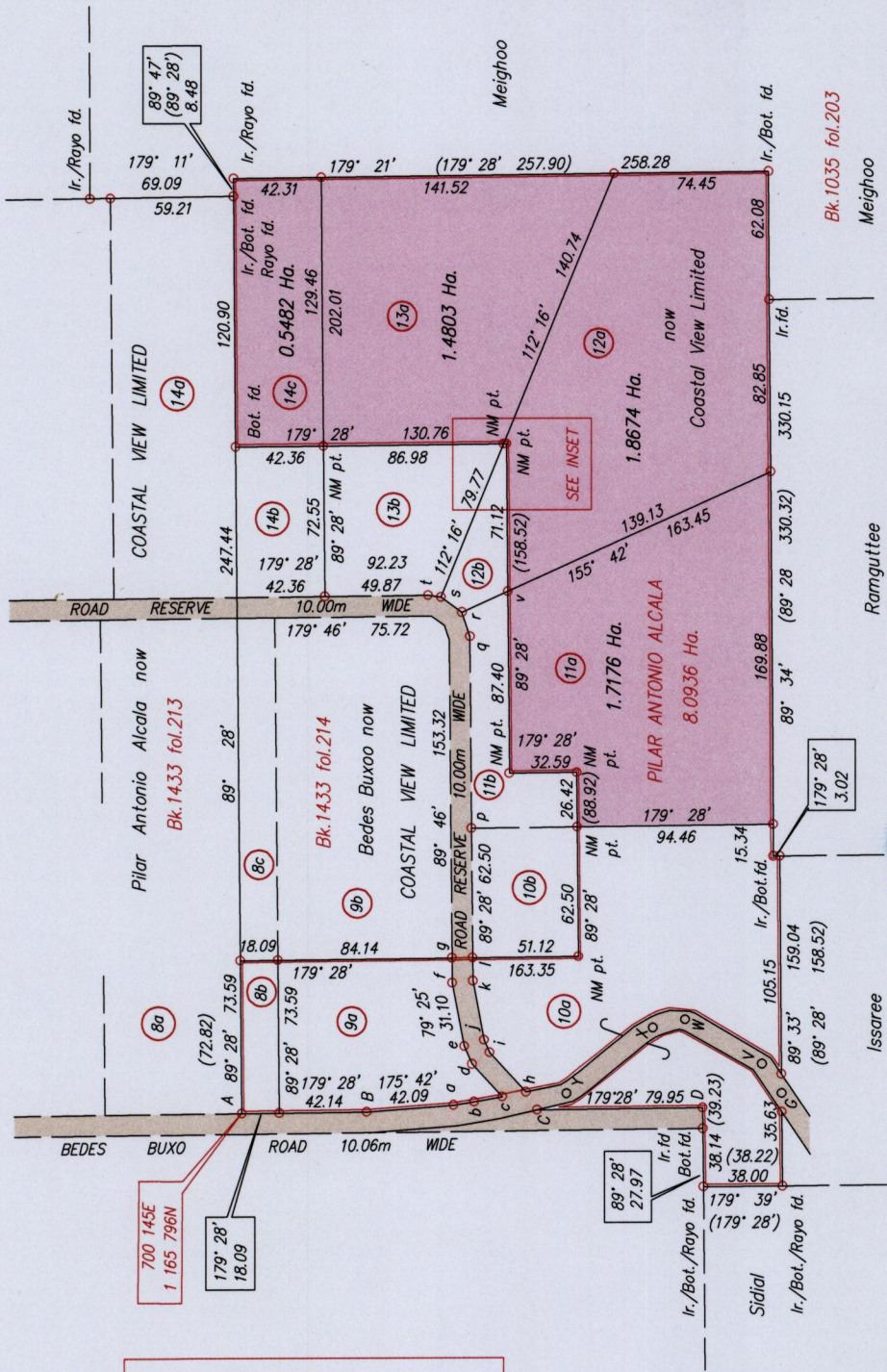
Containing together five point six one three five hectares

Surveyed by me, with due authority, in June 2010

In accordance with Regulation 25(1) of the Land Surveyors Regulations 1998,

I certify that this plan is correct.

Checked by *mm.10/10/2015*  
Entered .....  
*Elizabeth Hamilton*  
Trinidad & Tobago Land Surveyor ..... December 29 ..... 2014



| LINE | BEARING  | DISTANCE |
|------|----------|----------|
| ab   | 171° 04' | 10.11    |
| bc   | 169° 54' | 13.76    |
| cd   | 47° 14'  | 21.45    |
| de   | 66° 11'  | 9.42     |
| fg   | 89° 28'  | 11.89    |
| hi   | 47° 14'  | 25.92    |
| ij   | 66° 11'  | 6.60     |
| jk   | 79° 25'  | 29.06    |
| kl   | 89° 28'  | 11.01    |
| pq   | 89° 28'  | 92.38    |
| qr   | 71° 41'  | 12.21    |
| rs   | 35° 42'  | 12.50    |
| st   | 08° 29'  | 6.27     |
| rv   | 155° 42' | 24.32    |
| Ch   | 58° 13'  | 10.19    |
| AD   | 179° 28' | 222.57   |
| BC   | 179° 28' | 82.39    |

Co-ordinates are U.T.M. Zone 20 Naparima Datum +/-5m  
obtained from handheld G.P.S.

Plots 11a and 11b to be amalgamated  
Plots 12a and 12b to be amalgamated  
Plots 13a and 13b to be amalgamated  
Plots 14a, 14b and 14c to be amalgamated



1656

783

1656/78

