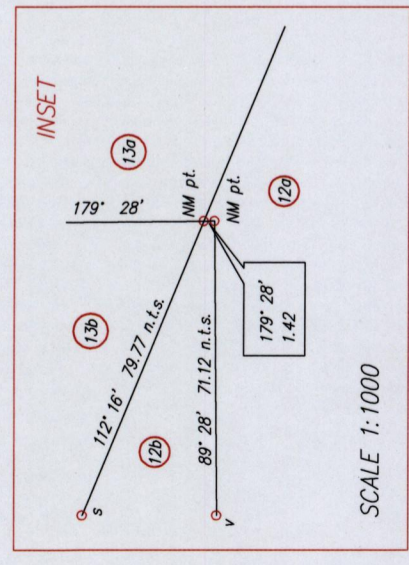


RPO# 66: 2014/12/29
Liz Hamilton

Process I# 100179
R.P.O. Vol. 128 fol. 97
C.T. Vol. 5392 fol. 375B

Ward of Tamana
County of St. Andrew
Cadastral Sheet E.1.K., 35B
2/a

WIDE Bk.19 fol.105
Bk.1433 fol.214



SCALE 1:1000

Approved
.....
Director of Surveys
21/1/15

SCALE 1:3500

o denotes Ir.pt. unless otherwise stated
Distances are in metres

Bearings are U.T.M. Grid based on Solar Observations

PLAN of 4 Parcels of land coloured pink in the Ward of Tamana
Containing together one point two five three three hectares
Surveyed by me, with due authority, in June 2010

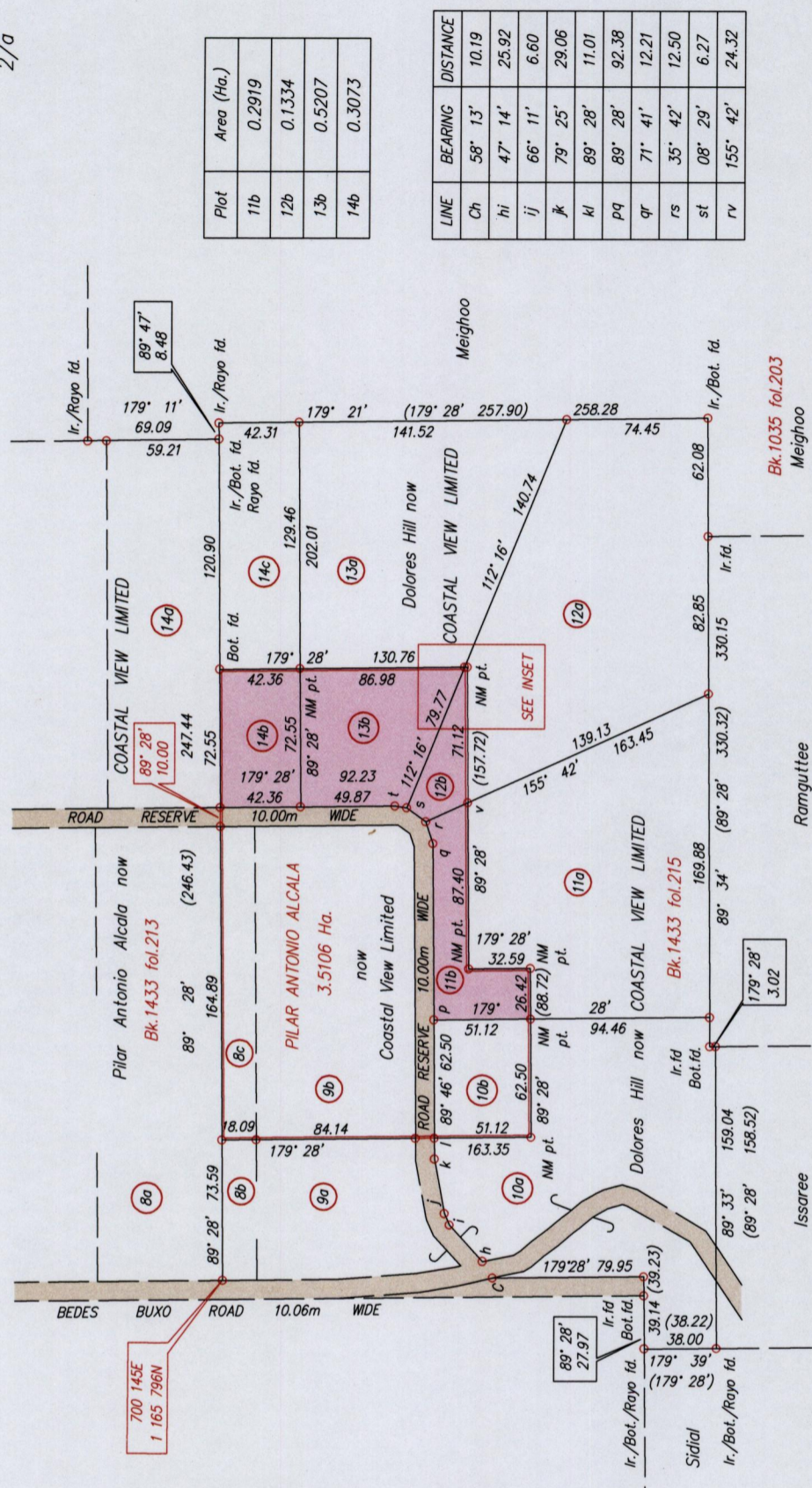
Certified Correct in accordance with Regulation 25(1) of the Land Surveyors Regulations 1998.

Checked by *[Signature]* 01/4/2015

Entered

Lizbeth Ann Hamilton
.....

Trinidad & Tobago Land Surveyor ..December 29, 2014

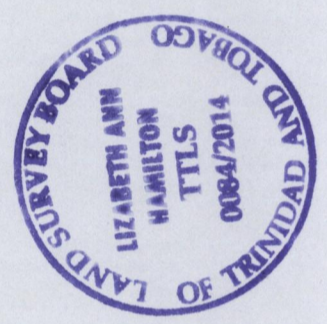


Plot	Area (Ha.)
11b	0.2919
12b	0.1334
13b	0.5207
14b	0.3073

LINE	BEARING	DISTANCE
Ch	58° 13'	10.19
hi	47° 14'	25.92
ij	66° 11'	6.60
jk	79° 25'	29.06
kl	89° 28'	11.01
pq	89° 28'	92.38
qr	71° 41'	12.21
rs	35° 42'	12.50
st	08° 29'	6.27
rv	155° 42'	24.32

Co-ordinates are U.T.M. Zone 20 Naparima Datum +/-5m
obtained from handheld G.P.S.

Plots 11a and 11b to be amalgamated
Plots 12a and 12b to be amalgamated
Plots 13a and 13b to be amalgamated
Plots 14a, 14b and 14c to be amalgamated



1656

77

U.T.M.
G1N

1656/77

1000

