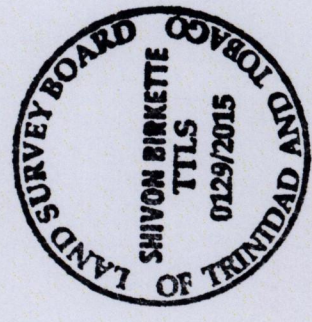


1056

74

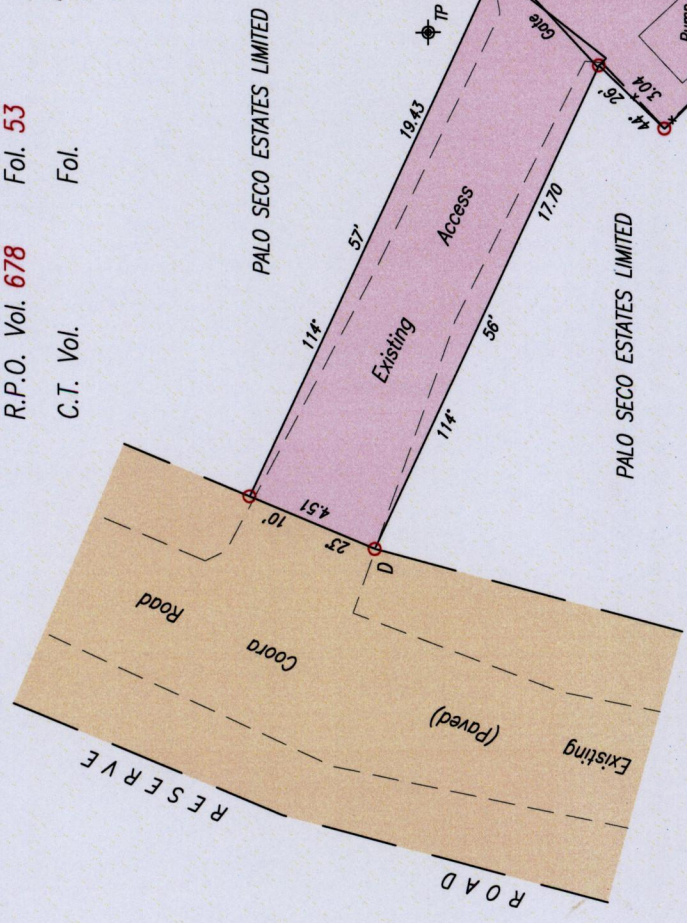
Cadastral Sheet G.17.G. 73B  
1/d  
Ward of Siparia  
County of St. Patrick

Vide : Bk. 457 Fol. 160  
WELL SITES #2 & #3  
D (Iron put) : N 1119171  
E 663751



A - B	: 134' 02'	140.49
B - C	: 193' 56'	308.84
C - D	: 231' 31'	200.10
D - TP	: 95' 59'	17.28

— x — Wire Fence  
⊕ TP Telephone Pole



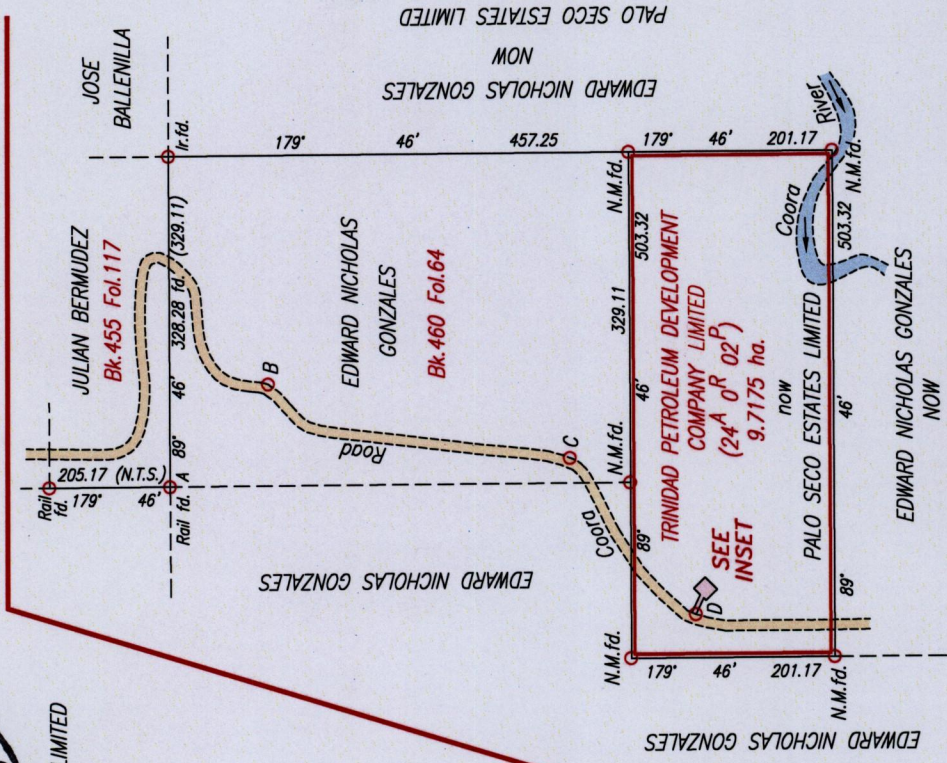
Approved  
Director of Surveys  
21/4/15

Coordinates obtained by hand held G.P.S. (+/-5.0m.)  
○ Denotes Iron put except where otherwise stated  
Bearings are U.T.M. grid based on Solar Observations  
PLAN of a Parcel of land coloured pink in the Ward of Siparia  
Containing three hundred and forty five point three square metres  
Surveyed by me, with due authority, in November 2012 for the Water and Sewerage Authority (W.A.S.A.)  
Certified Correct in accordance with Regulation 25 (1) of the Land Surveyors Regulations 1998

Checked by: Shiyon Birkette

Entered on: Trinidad & Tobago Land Surveyor. 3rd February 2015.

FILE PATH = AD4002 D:\WASA\WELL SITES\FINAL\WELL SITE #2&3\_REV.DWG.



SCALE 1:7500  
Distances are in metres

SCALE 1:250  
Distances are in metres



1656/74

1088

