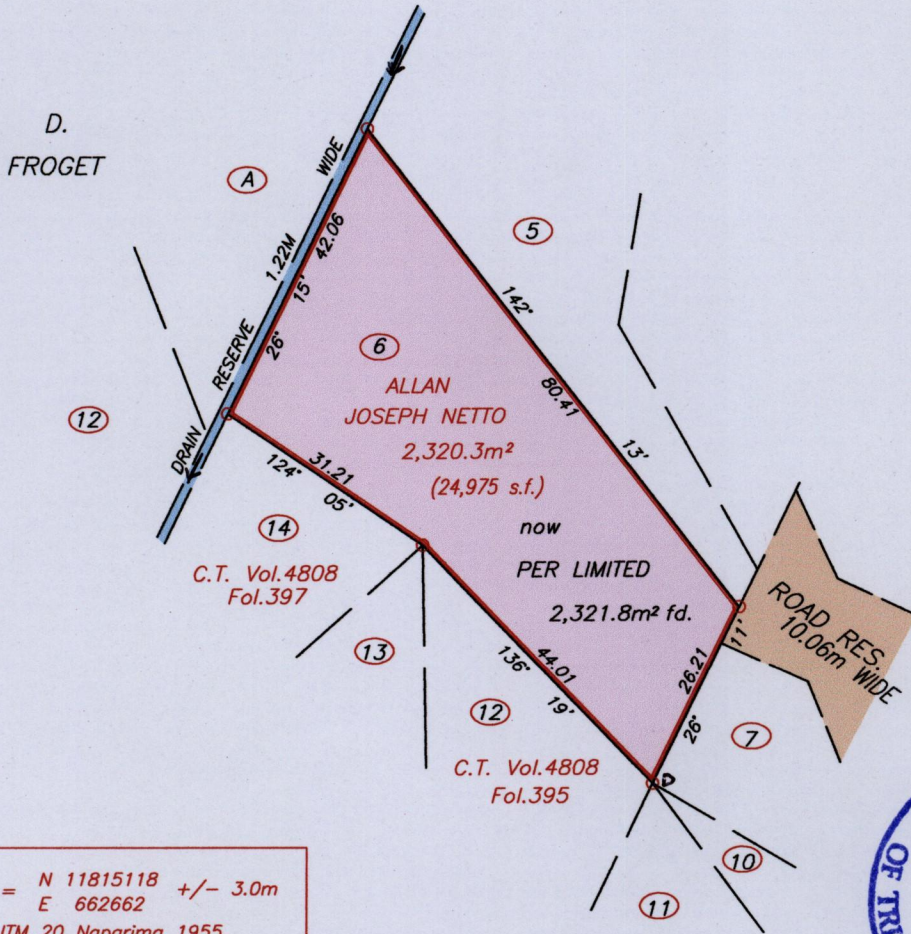
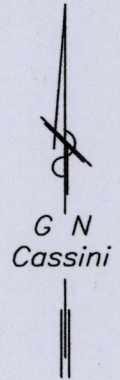


R.P.O. Vol. Fol.  
C. of T. Vol. 4808 Fol. 393

Cadastral Sheet A.20.B <sup>13D</sup> 2/d  
Ward of St. Ann's  
County of St. George

See PLAN F.I.53



D = N 11815118 +/- 3.0m  
E 662662  
UTM 20 Naparima 1955  
Hand Held GPS



Approved .....  
Director of Surveys 2/14/15

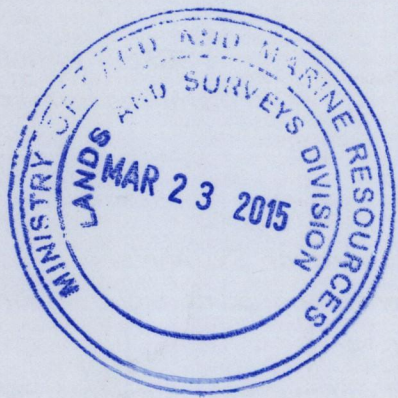
SCALE 1:1000  
Distances are in METRES

- Denotes Iron found unless otherwise stated
- Bearings are Cassini Grid based on Solar observations
- To obtain Compass Bearing subtract 2 minutes

PLAN of a Parcel of land coloured pink in the Ward of St. Ann's  
Containing two thousand three hundred and twenty one point eight square metres  
Surveyed by me with due authority in March 2014  
Certified correct in accordance with Regulation 25 (1) of the Land Surveyors Regulations 1998.

Checked by ..... T.T.L.S.  
Entered on .....  
Trinidad & Tobago Land Surveyor *or March* 2015





1656/72