

1656

63E

U.P.R.N.....

Ward of Siparia

R.P.O. Vol. 11 Fol. 63

County of St. Patrick

C.T. Vol. 3639 Fol. 153

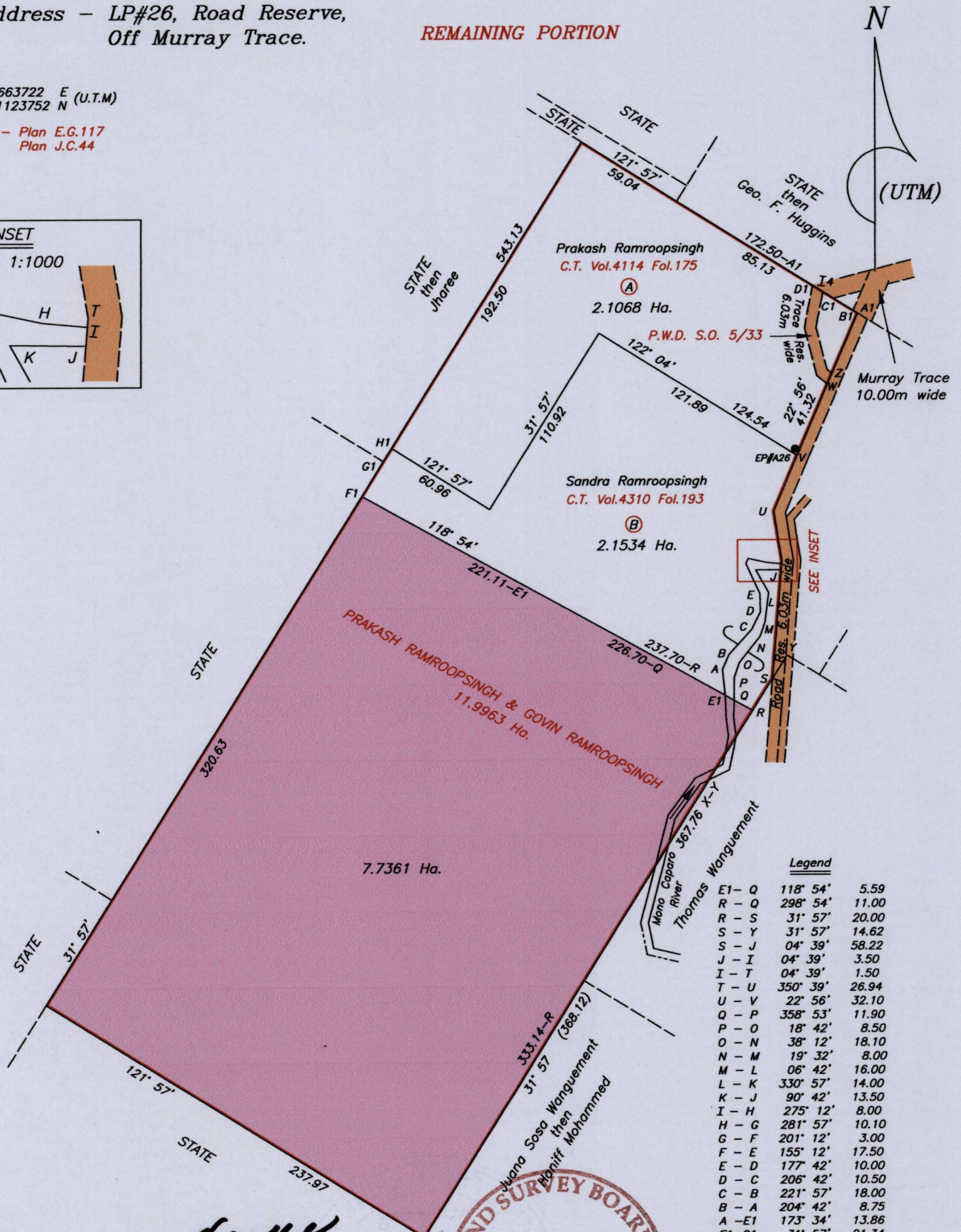
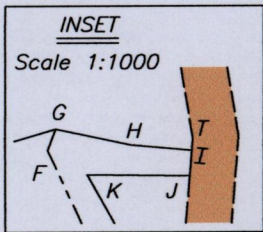
Cadastral Sheet G.12.K. 63E  
3/a

Address - LP#26, Road Reserve,  
Off Murray Trace.

REMAINING PORTION

X = 663722 E (U.T.M)  
1123752 N

Ref:- Plan E.G.117  
Plan J.C.44



Approved.....

Director of Surveys

Note - UTM (Nap-Zone 20) Coordinates obtained  
from hand held GPS receiver  
± 5.00m

Note: Bearings are U.T.M. grid based on solar observations

Plan of eleven point nine nine six three hectares originally granted to PRAKASH RAMROOPSINGH & GOVIN RAMROOPSINGH showing a portion coloured pink and containing seven point seven three six one hectares being the remainder after two previous transfers of other portions of the land. In accordance with Regulation 25(1) of the Land Surveyors Regulations 1998. I certify that this plan represents the remaining portion.

Checked by..... 27.03.2015

Entered on.....

Trinidad & Tobago Land Surveyor..... 5-3 .....2015

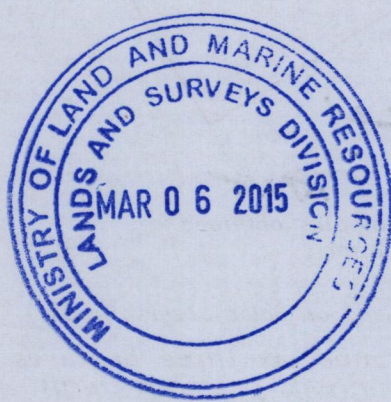
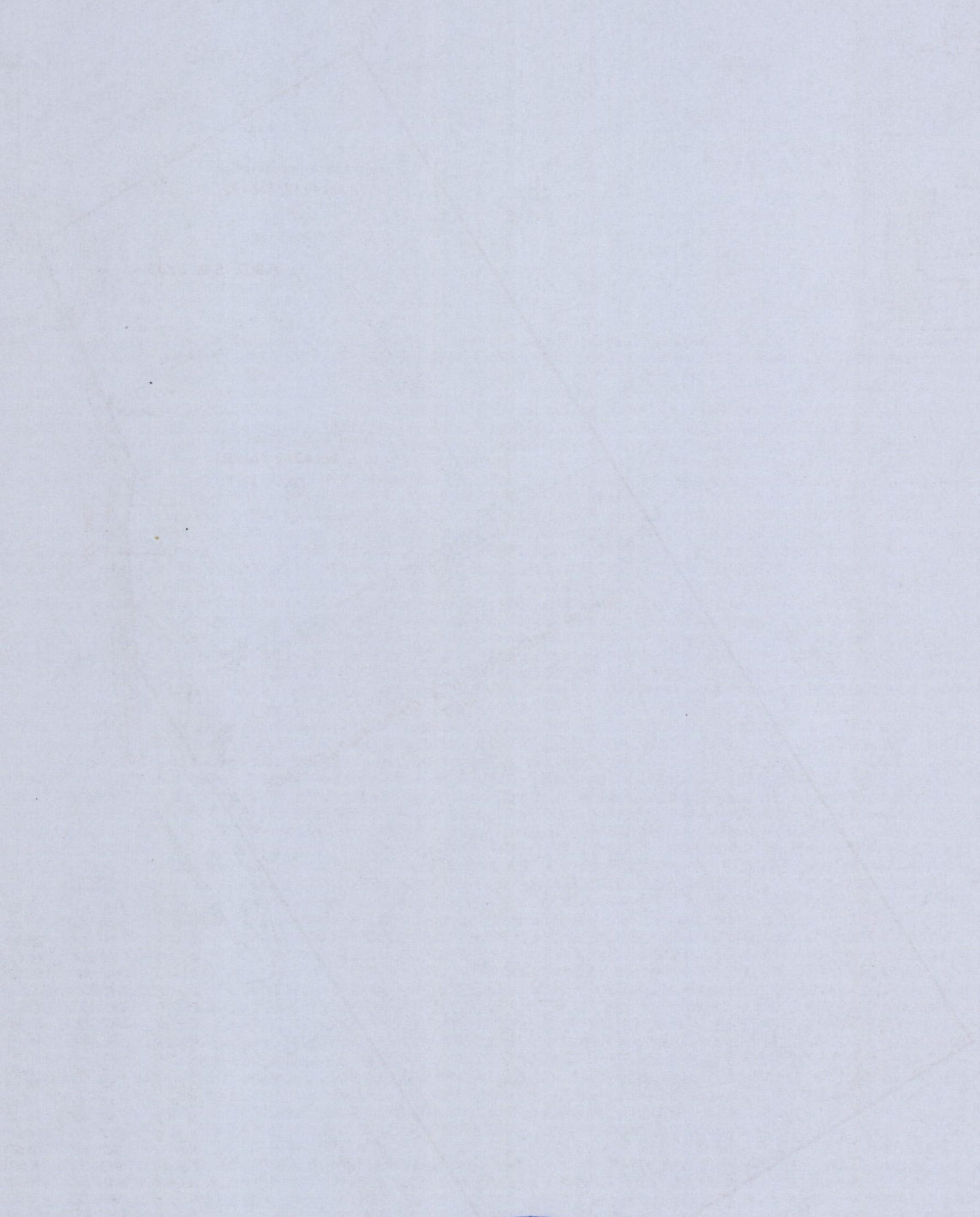
L.S.

00

1050

10  
10

ADVISORY COMMITTEE



1656/69