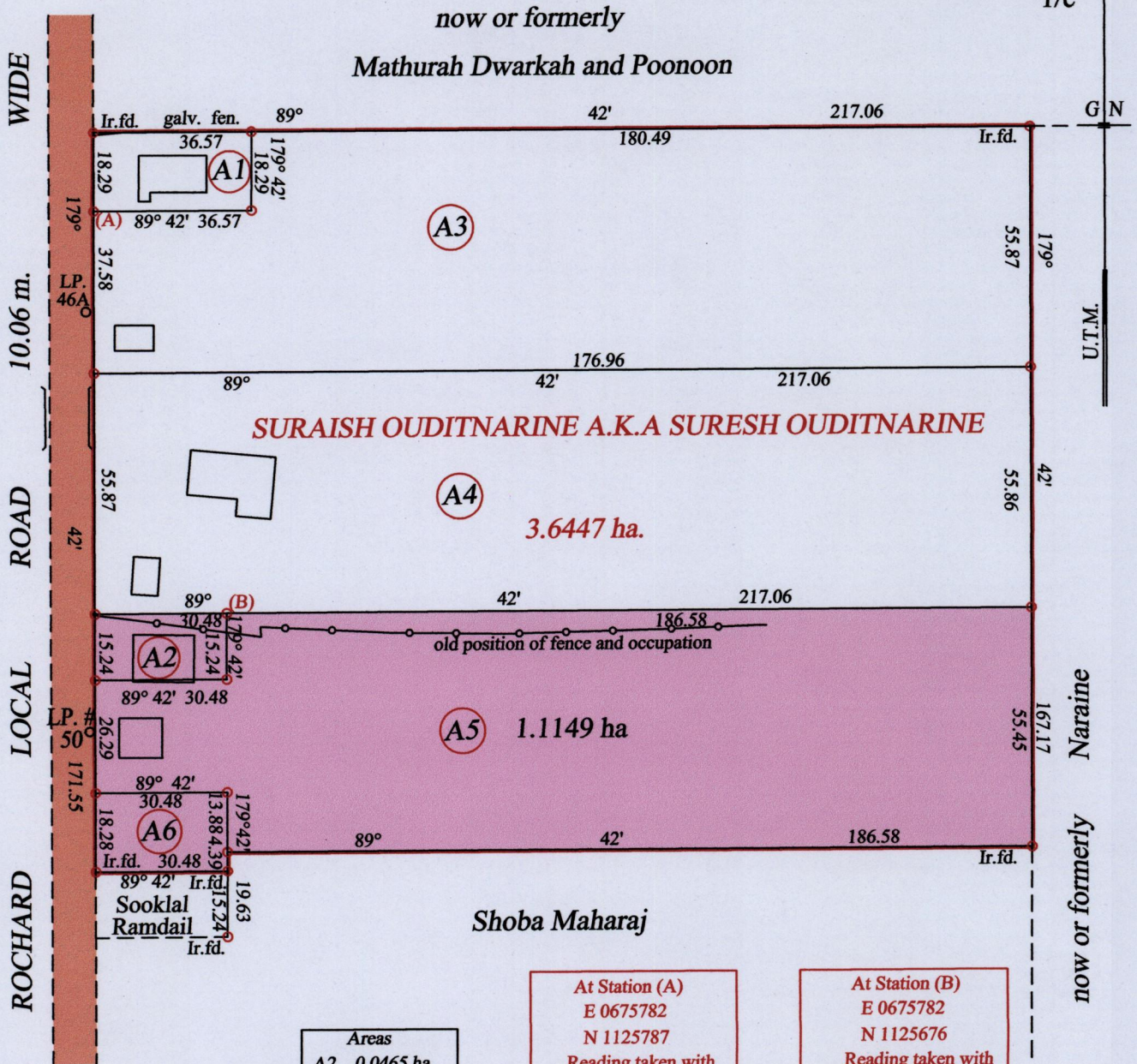


R.P.O. Vol. 208 Fol. 383
C.T. Vol. 3470 Fol. 485

Ward of Siparia
County of St. Patrick
Cadastral Sheet G.14.F. 64.D.
1/c



Areas	
A2	0.0465 ha
A6	0.0557 ha

(A) - Lp 46A - 4° 15' 23.46
(B) - Lp #50 - 49° 07' 41.77

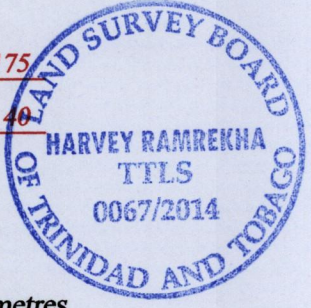
At Station (A)
E 0675782
N 1125787
Reading taken with
Handheld G.P.S.
U.T.M. Zone 20
Naparima
± 5 m.

At Station (B)
E 0675782
N 1125676
Reading taken with
Handheld G.P.S.
U.T.M. Zone 20
Naparima
± 5 m.

Vide Bk. 868 fol. 175

Vide Bk. 1017 fol. 40

Approved *[Signature]*
Director of Surveys 22/11/15



Scale 1:1500
Distances are in metres

○ Denotes Iron put except stated otherwise.
Note: Bearings are U.T.M. grid based on solar observations
PLAN of 3 Parcels of land coloured pink in the Ward of Siparia
Containing together one point two one seven one hectares
Surveyed by me, with due authority, in July 2009
Certified Correct in accordance with Regulation 25 (1) of the Land Surveyors' Regulations 1998,

Checked by *[Signature]*
Entered on Trinidad & Tobago Land Surveyor 27/11/2014



1656/6