

R.P.O. Vol. 61 Fol. 521  
 C.T. Vol. 2689 Fol. 239  
 U.P.I.N. No.:.....

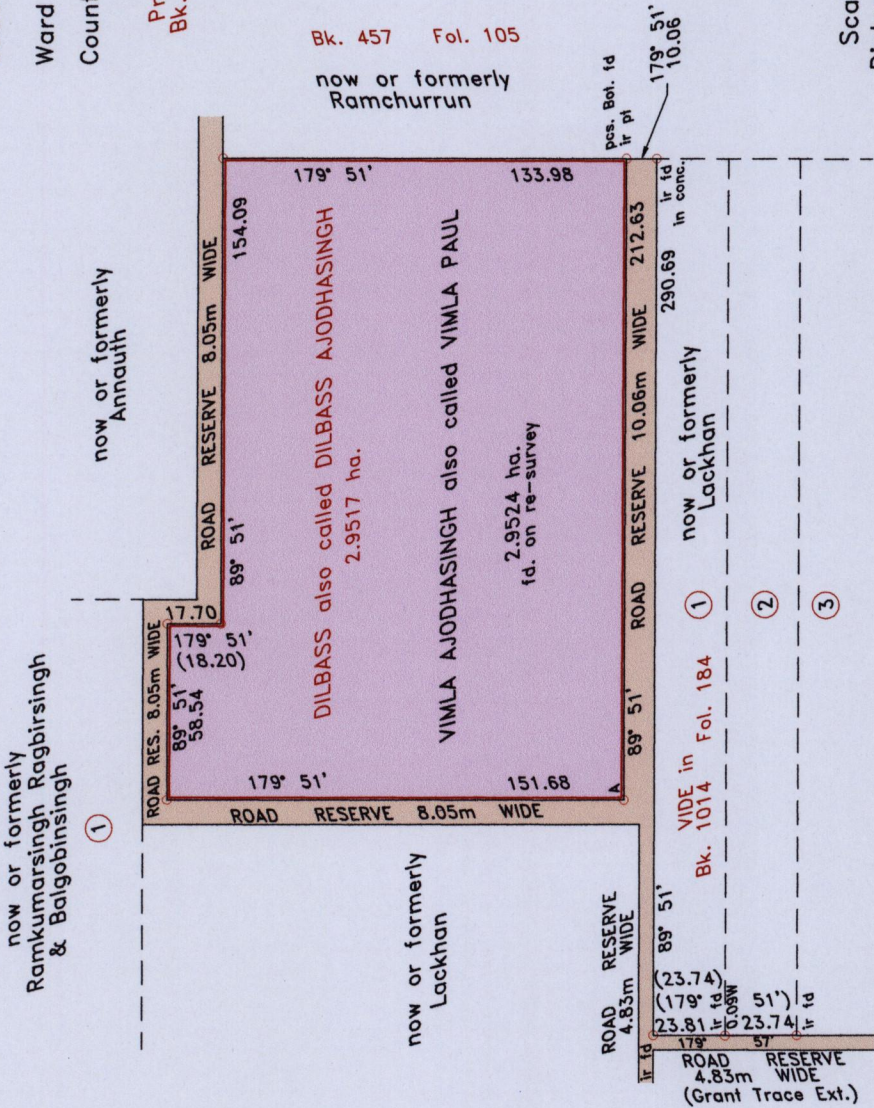
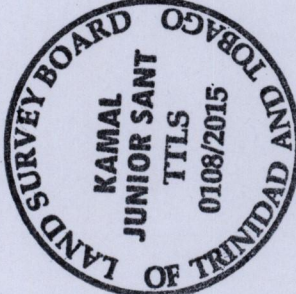
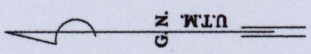
A - 655,357mE 1,126,883mN ±5m  
 Naparima Datum, UTM Zone 20N Projection

Cadastral Sheet 62F G.11.B  
 Ward of La Brea  
 County of St. Patrick

Previous survey in  
 Bk. 457 Fol. 143

1656

1656/3



Bk. 457 Fol. 105

Scale 1 : 2,500  
 Distances are in metres

Approved by *Kamal Junior Sant*  
 Director of Surveys  
 24/3/15

- Denotes iron put unless otherwise stated
- Bearings are U.T.M. grid based on solar observations.
- Coordinates are Naparima Datum, UTM Zone 20, obtained from handheld GPS measurement.
- PLAN of a parcel of land coloured pink in the Ward of La Brea.
- Containing two point nine five two four hectares.
- Surveyed by me with due authority, on 16th August, 2014.
- Certified correct in accordance with Regulation 25(1) of the Land Surveyors' Regulations 1998.

Checked by *R. -11/02/15*  
 Entered on .....

..... *Kamal Junior Sant* .....  
 Trinidad & Tobago Land Surveyor ...*06/06/2015*.....

57





1656/57