

1656

1656/55

55

R.P.O. Vol. 16 Fol. 569

Cadastral Sheet D.22.B. $\frac{43F}{3/c}$

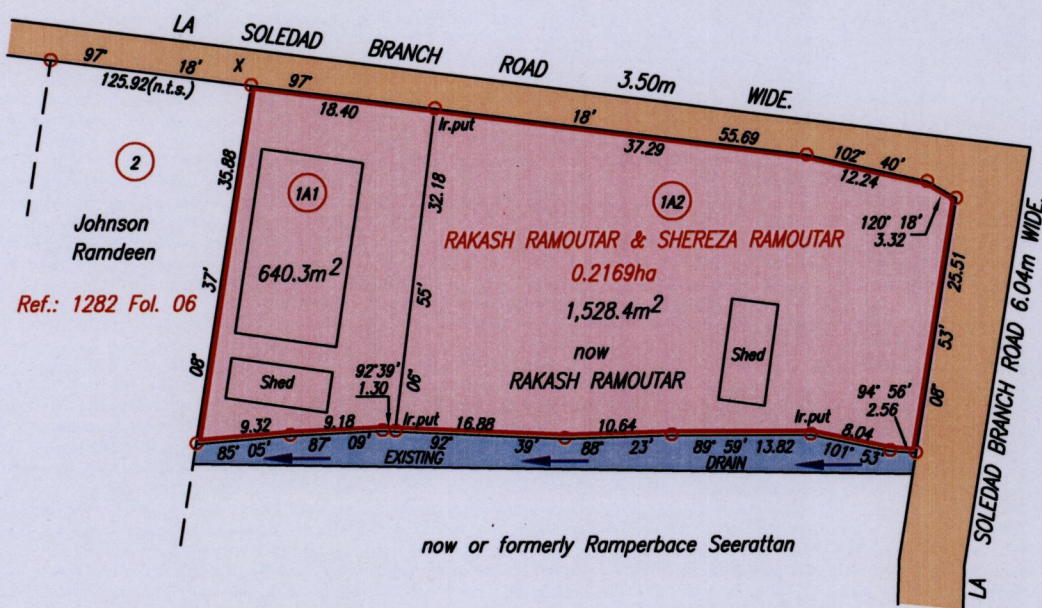
C.T. Vol. 5057 Fol. 403

Ward of Pointe - a - Pierre

Ref.: Bk. 1233 Fol. 203

County of Victoria

Claxton Bay.



Ref.: 1282 Fol. 06

X : 670569mE, 1163071mN
 (U.T.M. 20, WGS 84 (+/-5m))
 Coordinates obtained from
 hand held GPS.



Approved

[Signature]
 Director of Surveys
 24/3/15

SCALE 1:750

Distances are in Metres

○ Denotes Iron found except otherwise stated.

Bearings are U.T.M. Grid based on Solar Observations.

PLAN of 2 Parcels of land coloured pink in the Ward of Pointe - a - Pierre.

Containing together two thousand, one hundred and sixty eight point seven square metres.

Surveyed by me, with due authority, in April, 2013

Certified Correct in accordance with Regulation 25(1) of the Land Surveyors' Regulations 1998,

Checked by *[Signature]* 16/3/2015
 Winston Ramcharan

Entered on Trinidad & Tobago Land Surveyor 7th February .2015



1656/55