

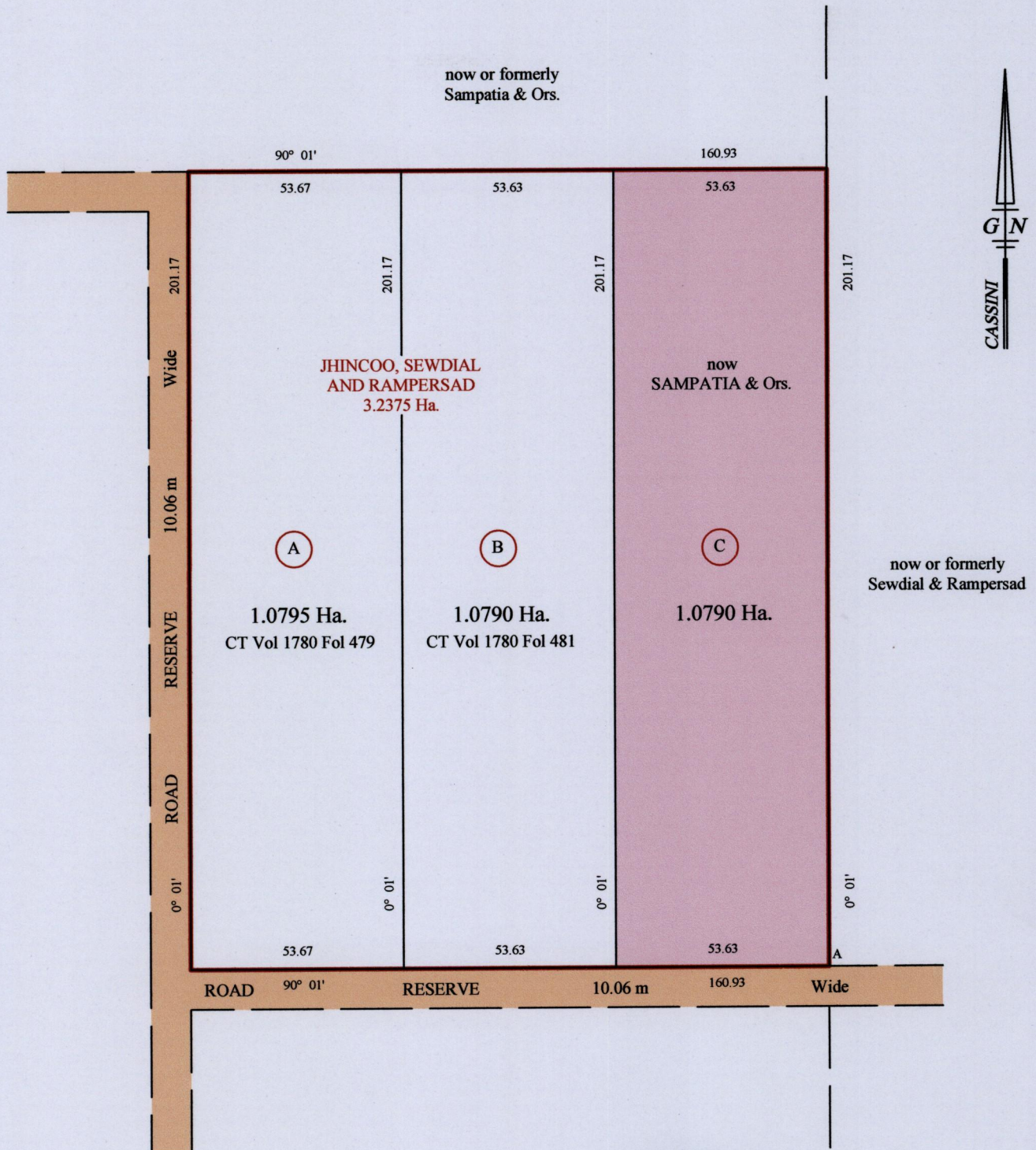
1656

51

RPO Vol 273 Fol 77
CT Vol 806 Fol 605
Ref. Bk 1002 Fol 20

Remaining Portion Plan

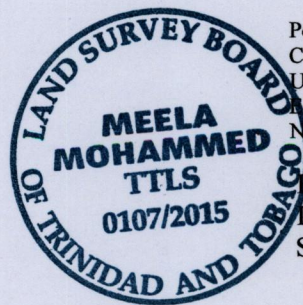
Cadastral Sheet G.13.P., 63F
County of St. Patrick 4/c
Ward of Siparia



Approved

Director of Surveys

[Signature]
19/3/15



Point A
Coords. scaled off 63F sheet
UTM Zone 20, International
0672970
N 1122060

Bearings are Cassini Grid
Distances are in Metres
SCALE 1/1500

PLAN of three point two three seven five Hectares of land, originally transferred to Jhincoo & Ors., showing a portion coloured pink and containing one point zero seven nine zero Hectares, being the remainder after two previous transfers of other portions of the land. In accordance with Regulation 25 (1) of the Land Surveyors' Regulations 1998, I certify that this plan represents the remaining portion.

Checked by
Entered on

Meela Mohammed
Trinidad and Tobago Land Surveyor

22/02/2015



1656/51