

REMAINING PORTION PLAN

R.P.O. Vol. 14 Fol. 225

C.T. Vol. 4139 Fol. 95

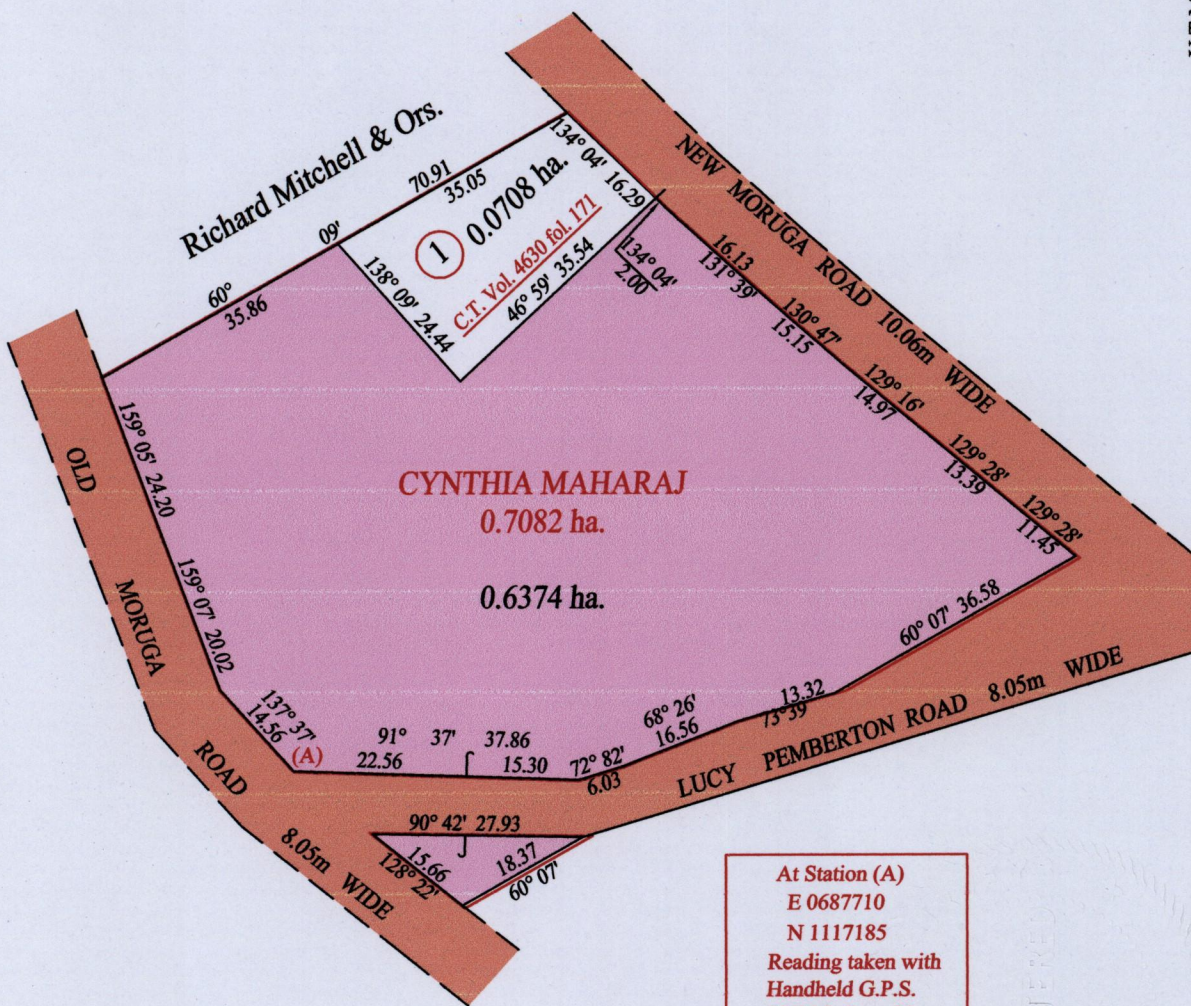
Ward of Moruga

County of Victoria

Cadastral Sheet G.20.P $\frac{74 C}{3/d}$

G N

U.T.M.



At Station (A)
 E 0687710
 N 1117185
 Reading taken with
 Handheld G.P.S.
 U.T.M. Zone 20
 Naparima
 + 5 m.

Approved *[Signature]*
 Director of Surveys *22/1/15*

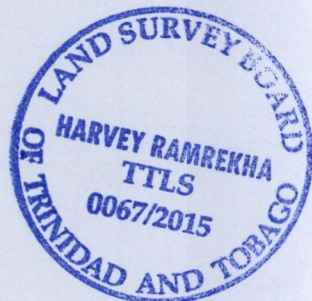
Vide Bk. 985 fol. 178

SCALE : 1:1000

Note: Bearings are U.T.M. grid based on solar observations Distances are in metres
 Plan of zero point seven zero eight two hectares originally transferred to Cynthia Maharaj, showing a portion coloured pink and containing zero point six three seven four hectares being the remainder after one (1) previous transfer of another portion of the land. In accordance with Regulation 25(1) of the Land Surveyors Regulations 1998 I certify that this plan represents the remaining portion

Checked by *[Signature]*

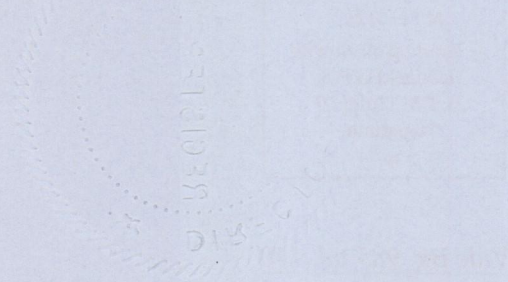
Entered on Trinidad & Tobago Land Surveyor *15.01* 2015



14

1000

1000



1656/5