

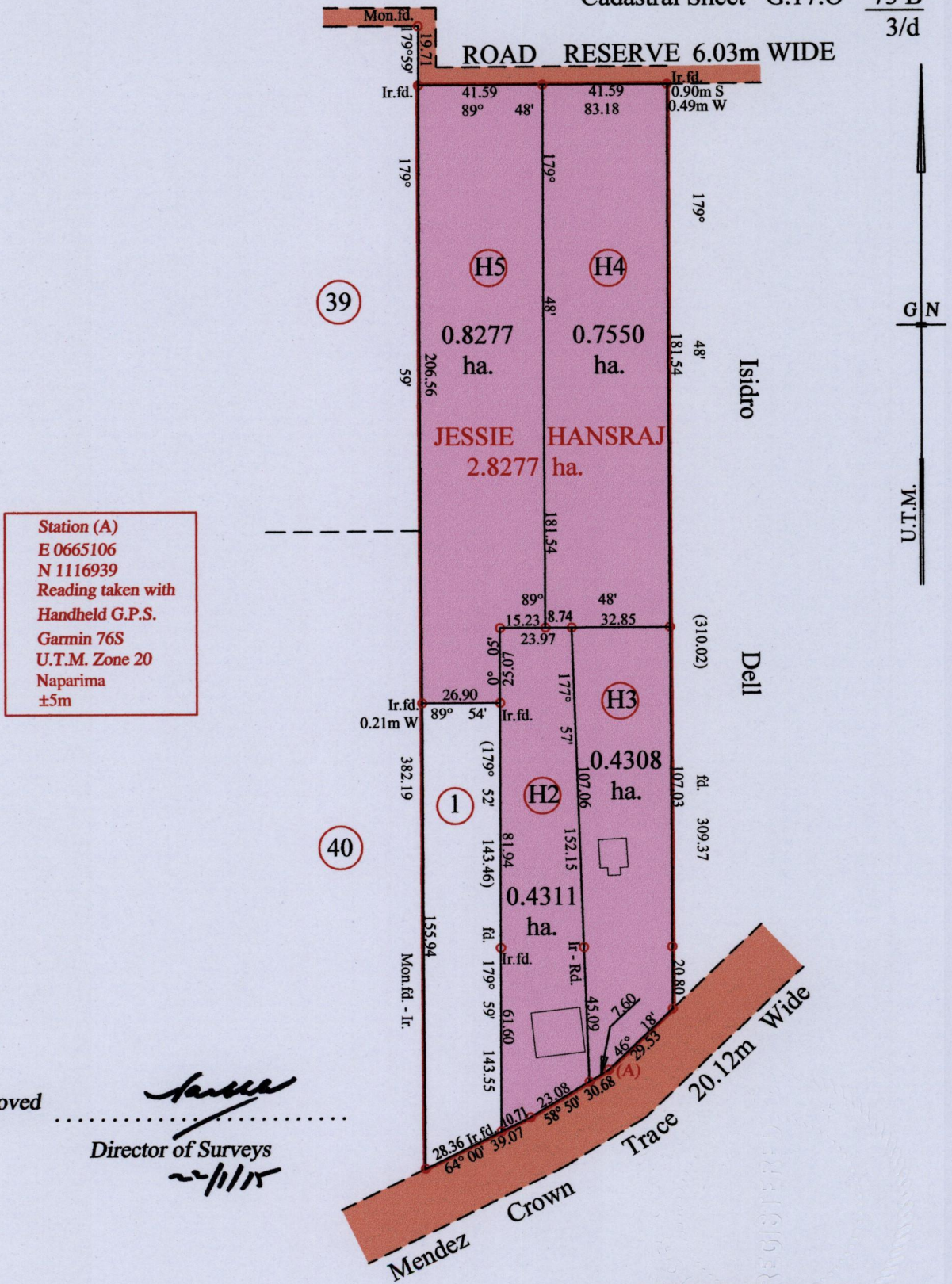
R.P.O. Vol. 599 Fol. 431

C.T. Vol. 4164 Fol. 265

Ward of Siparia

County of St. Patrick

Cadastral Sheet G.17.0 73 B
3/d



Approved

Director of Surveys

Vide Bk. 598 fol. 193

SCALE : 1:2000

○ Denotes Iron Put except stated otherwise.

Note: Bearings are U.T.M. grid based on solar observations

Distances are in metres

PLAN of 4 Parcels of land colored pink in the Ward of Siparia

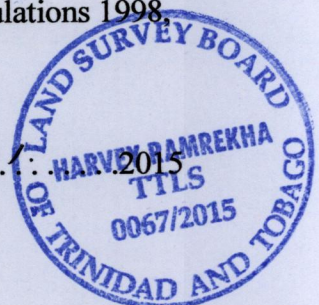
Containing together two point four four four six hectares

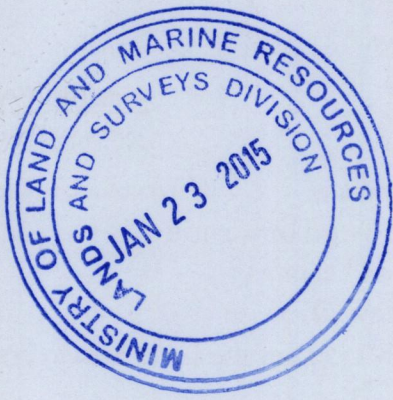
Surveyed by me, with due authority, in February 2013

Certified Correct in accordance with Regulation 25 (1) of the Land Surveyors' Regulations 1998.

Checked by

Entered on Trinidad & Tobago Land Surveyor (TTLS)





1656/3