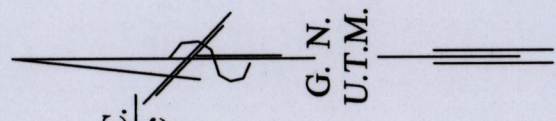


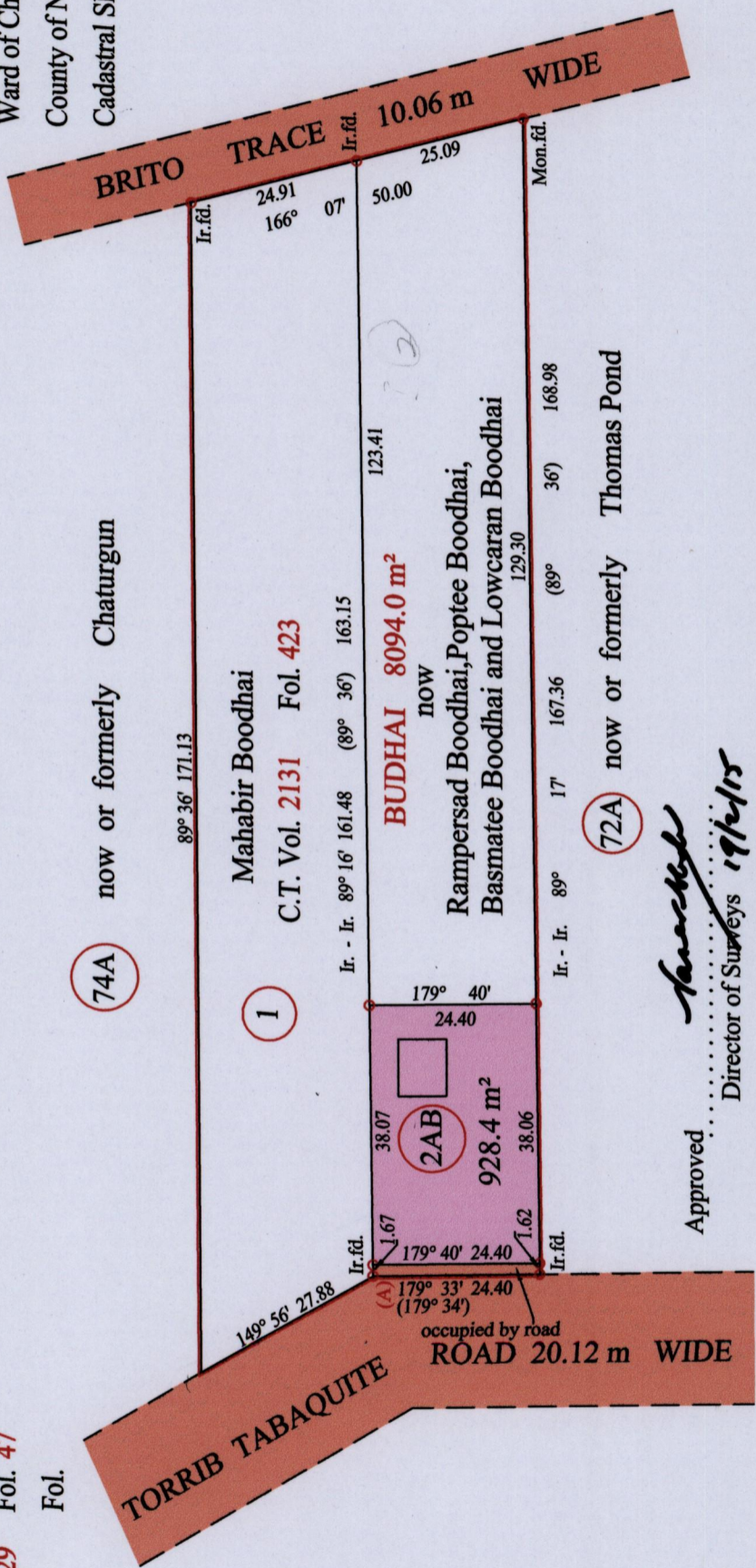
R.P.O. Vol. 729 Fol. 47  
 C.T. Vol. Fol.

Ward of Charuma  
 County of Nariva  
 Cadastral Sheet D.25.I 54C.  
 2/c



1656

283



Approved .....  
 Director of Surveys 19/11/15

SCALE : 1:1000

o Denotes Iron put except stated otherwise.

Note: Bearings are U.T.M. grid based on solar observations Distances are in metres

PLAN of a parcel of land coloured pink in the Ward of Charuma

Containing nine hundred and twenty eight point four square metres

Surveyed by me, with due authority, in June 2012

Certified Correct in accordance with Regulation 25(1) of the Land Surveyors Regulations 1998

Checked by *H.R. 2.6/15* .....  
*Kevin Bardass* .....

Entered on ..... Trinidad & Tobago Land Surveyor *881.01* .....2015

Vide Bk. 999 fol. 90

At Station (A)  
 E 0688610  
 N 1142231  
 Reading taken with  
 Handheld G.P.S.  
 U.T.M. Zone 20  
 Naparima  
 + 5 m.

1656/28

