

1656

24

R.P.O Vol. 154 Fol. 177

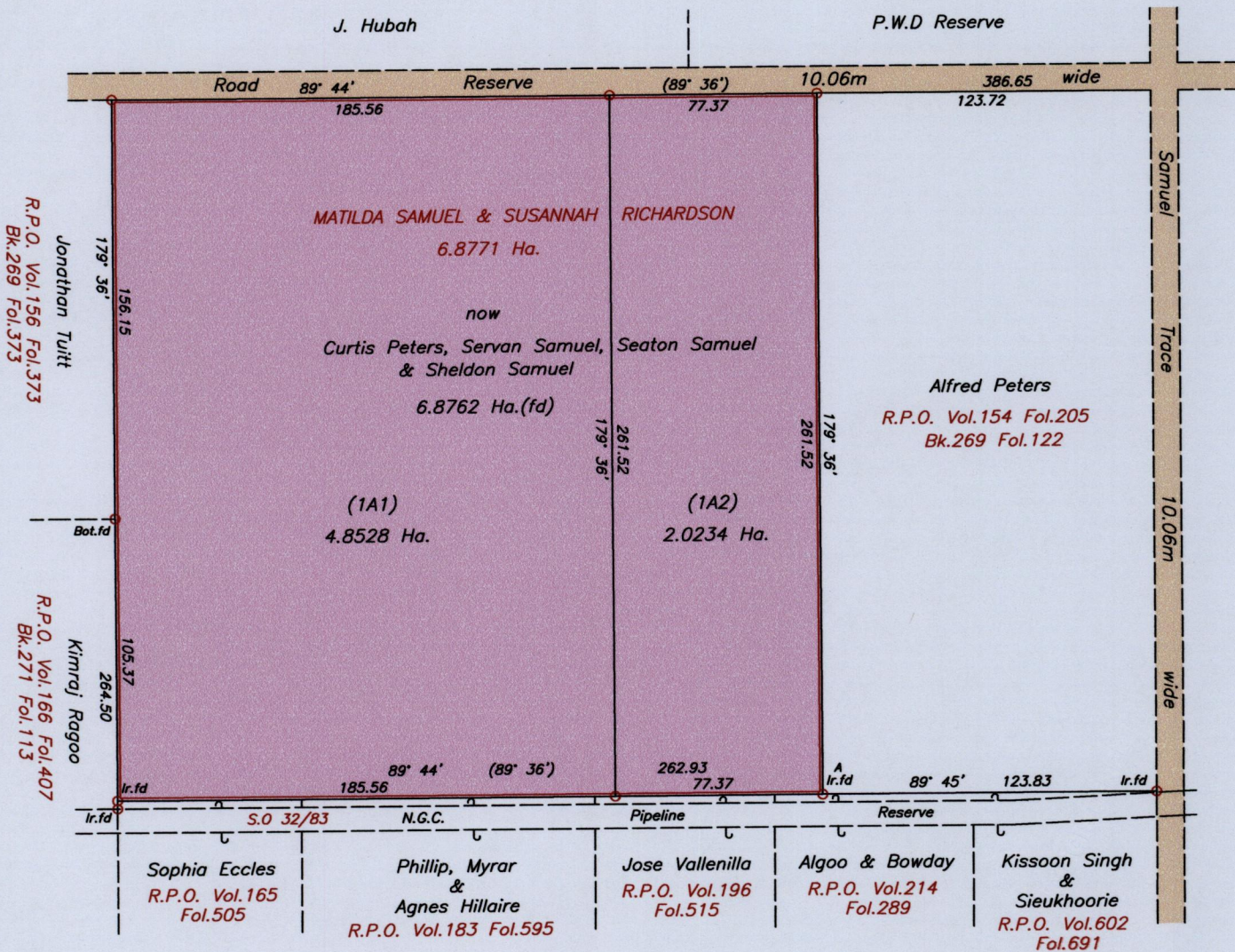
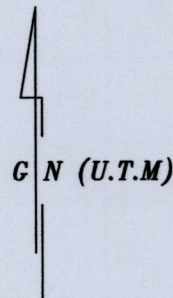
Ward of Charuma

C.T Vol. 1205 Fol. 257

County of Nariva

Ref: Bk.269 Fol.117

Cadastral Sheet  $\frac{54C}{2/b}$  D.25.E



Approved.....  
*Saventhub*  
 Director of Surveys 19/2/15



Note: U.T.M 20 Naparima (GPS +/- 3.0m)  
 ○ Denotes Iron put unless otherwise stated  
 Bearings are U.T.M Grid based on solar observations  
 To obtain Cassini bearings add 18 minutes

N1143095  
 A = E 690193  
 SCALE 1:2500  
 Distances are in METRES

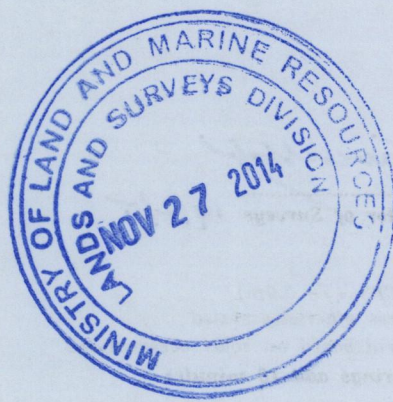
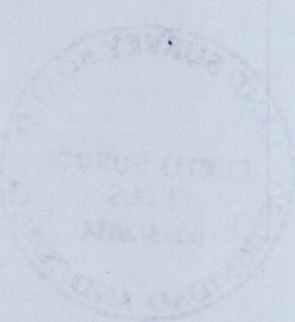
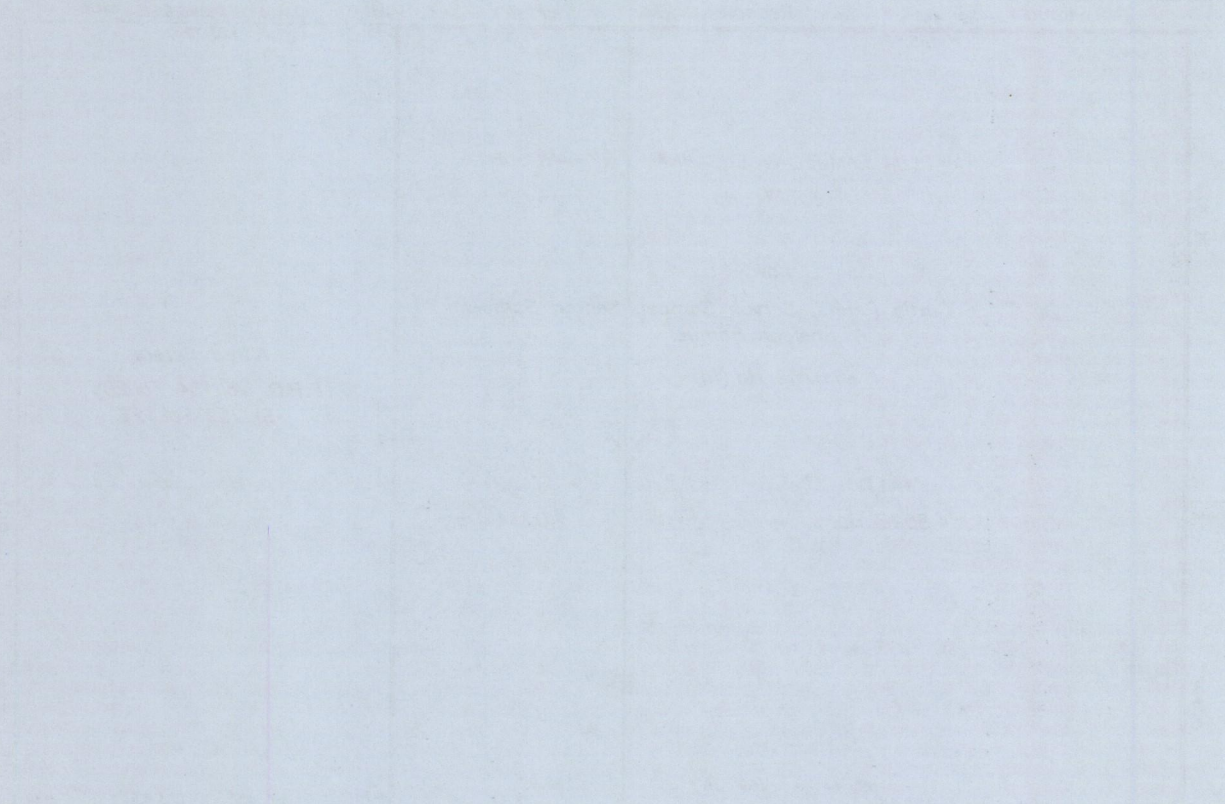
PLAN of 2 Parcels of land coloured pink in the Ward of Charuma.  
 Containing together six point eight seven six two hectares.  
 Surveyed by me, with due authority, in June 2012.  
 Certified Correct in accordance with Regulation 25 (1) of the Land Surveyors Regulations 1998.

Checked by *H-03/02/15* ..... *Curtis Gokool*

Entered on ..... Trinidad and Tobago Land Surveyor *October 14* ..... 2014

1656  
R.P.O. Vol. 124 Fol. 17  
C.T. Vol. 1200 Fol. 17  
T.C. Vol. 1200 Fol. 17  
T.C. Vol. 1200 Fol. 17

1656



PLAN of 2 Portions of land coloured pink in the Field of Chart  
Containing together an equal right seven or two hectares  
Surveyed by me with due authority, June 2014  
Certified Correct in accordance with Regulation 25 (1) of the Land Survey Regulations 1988  
Checked by: \_\_\_\_\_  
Surveyor General  
Ministry of Land and Marine Resources  
1914

1656/24