

1656

23

U.P.R.N.....

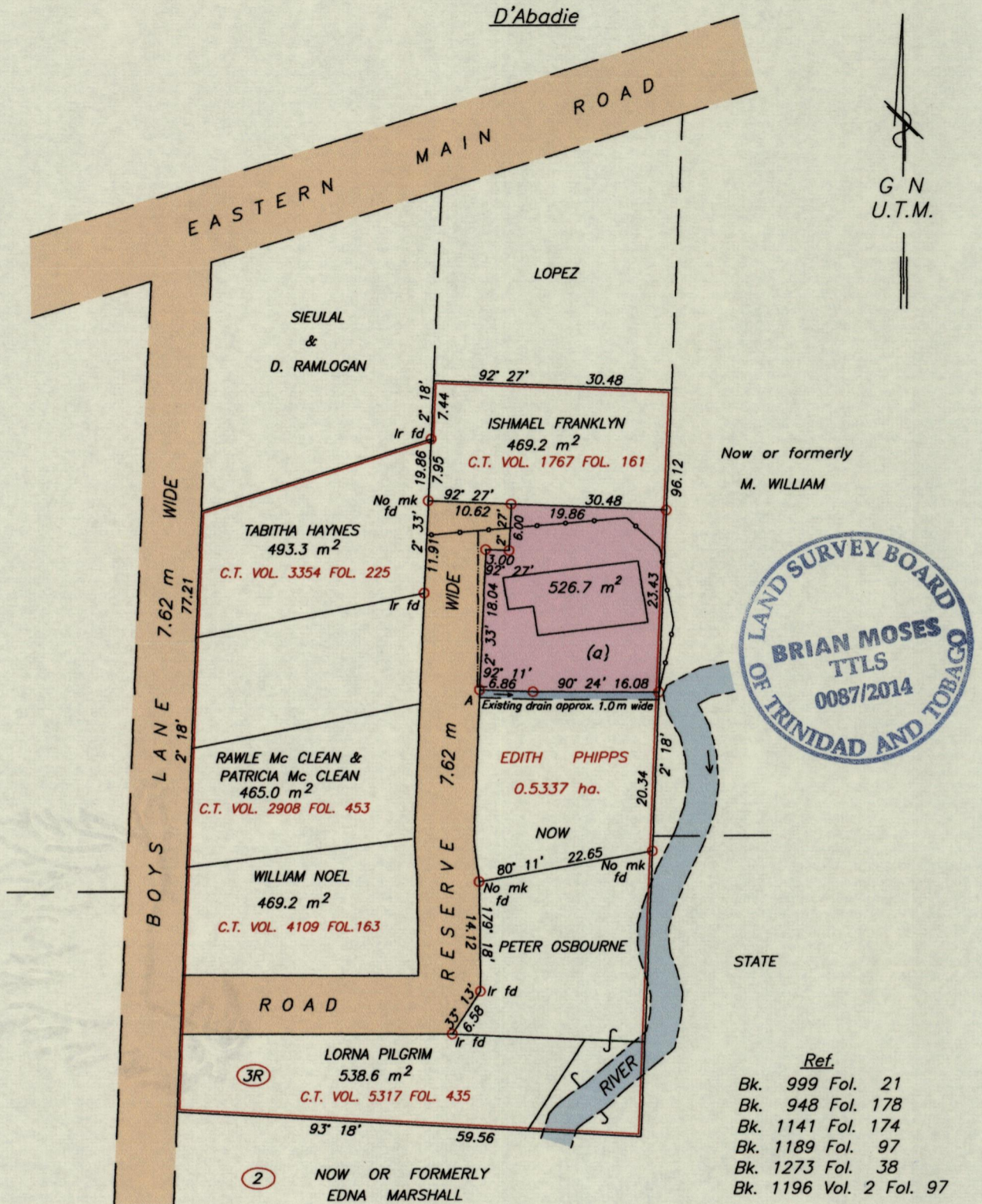
Cadastral Sheet B.24.C. <sup>24B</sup> 2/d,4/b

R.P.O. Vol. 31 Fol. 439

Borough of Arima

C.T. Vol. 1560 Fol. 327

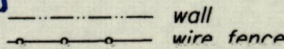
County of St. George



A - N 1175211  
E 665275

Derived From Hand-Held GPS (+/-5 m)  
UTM Zone 20 Naparima Co-ordinates

Approved .....  
Director of Surveys 19/2/15



SCALE 1:750  
Distances are in METERS

○ Denotes Iron put unless otherwise stated  
Bearings are U.T.M. Grid based on Solar observations

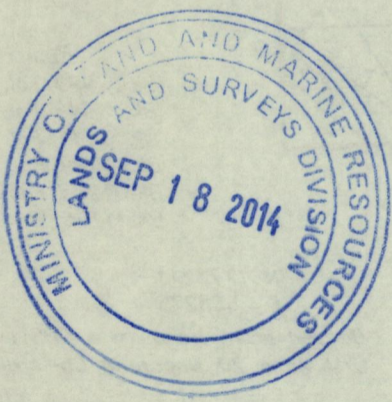
PLAN of a Parcel of land coloured pink in the Borough of Arima  
Containing five two six point seven square meters  
Surveyed by me, with due authority, in May, 2012  
Certified Correct in accordance with Regulation 25 (1) of the Land Surveyors  
Regulations 1998.

Checked by *mmc 26/9/2014*

Entered on .....

*Brian Moses*  
Trinidad & Tobago Land Surveyor (T.T.L.S.)  
15<sup>th</sup> September 2014





1656/23