

R.P.O. Vol. 69 Fol. 125

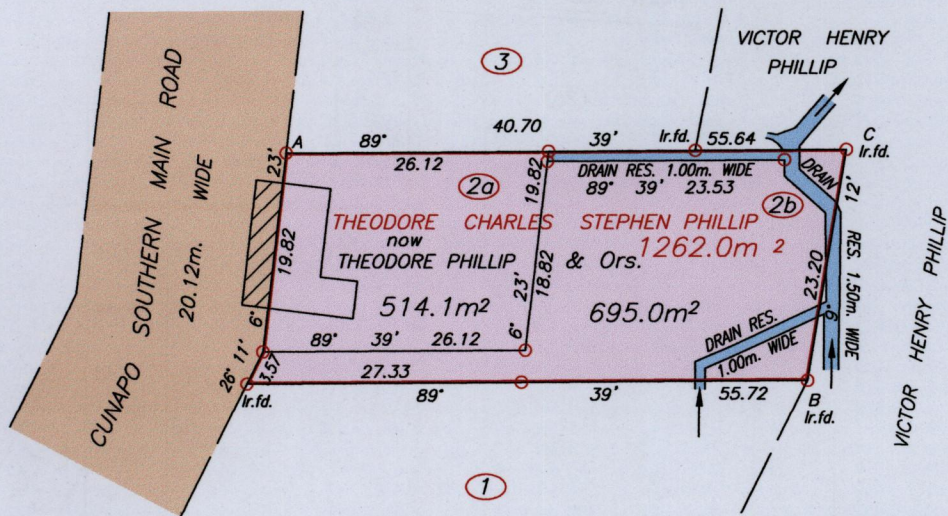
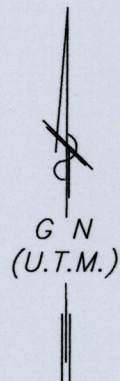
Cadastral Sheet E.2.I. ^{25F} 3/d

C.T. Vol. 3584 Fol. 497

Ward of Turure
County of St Andrew

VIDE: Bk.1211 Fol.76

SEE FIELD NOTES AT BACK OF PLAN



Approved
Director of Surveys 19/2/15

A = N 1167010 +/- 8.0m
E 704196
UTM 20 WGS 84 Hand Held GPS

To be demolished

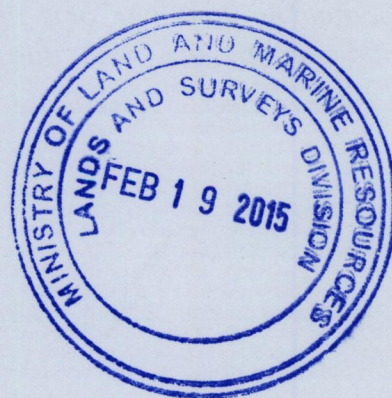
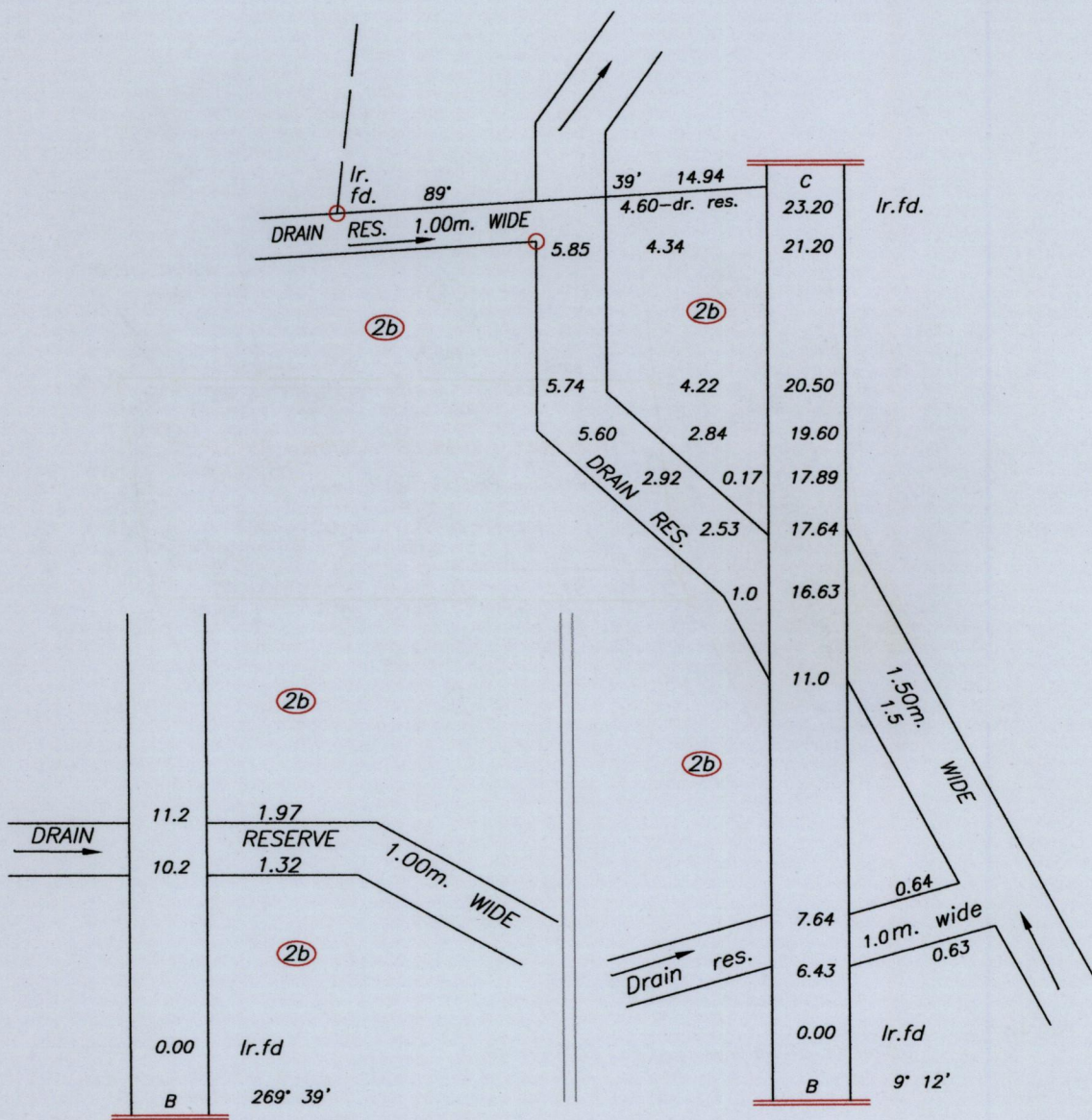
o Denotes Iron put unless otherwise stated
Bearings are U.T.M. Grid based on Solar observations

SCALE 1:750
Distances are in METRES

PLAN of 2 Parcels of land coloured pink in the Ward of Turure
Containing together one thousand two hundred and nine point one square metres
Surveyed by me, with due authority, in February 2013
Certified correct in accordance with Regulation 25 (1) of the Land Surveyors Regulations 1998.

Checked by Michael Jones T.T.L.S.

Entered on Trinidad & Tobago Land Surveyor 1st February 2015



1656/22