

1656

21

R.P.O. Vol. 159 Fol. 367

Cadastral Sheet 25B / 1/a, C.16.N.

C.T. Vol. 2894 Fol. 33

Ward of Manzanilla

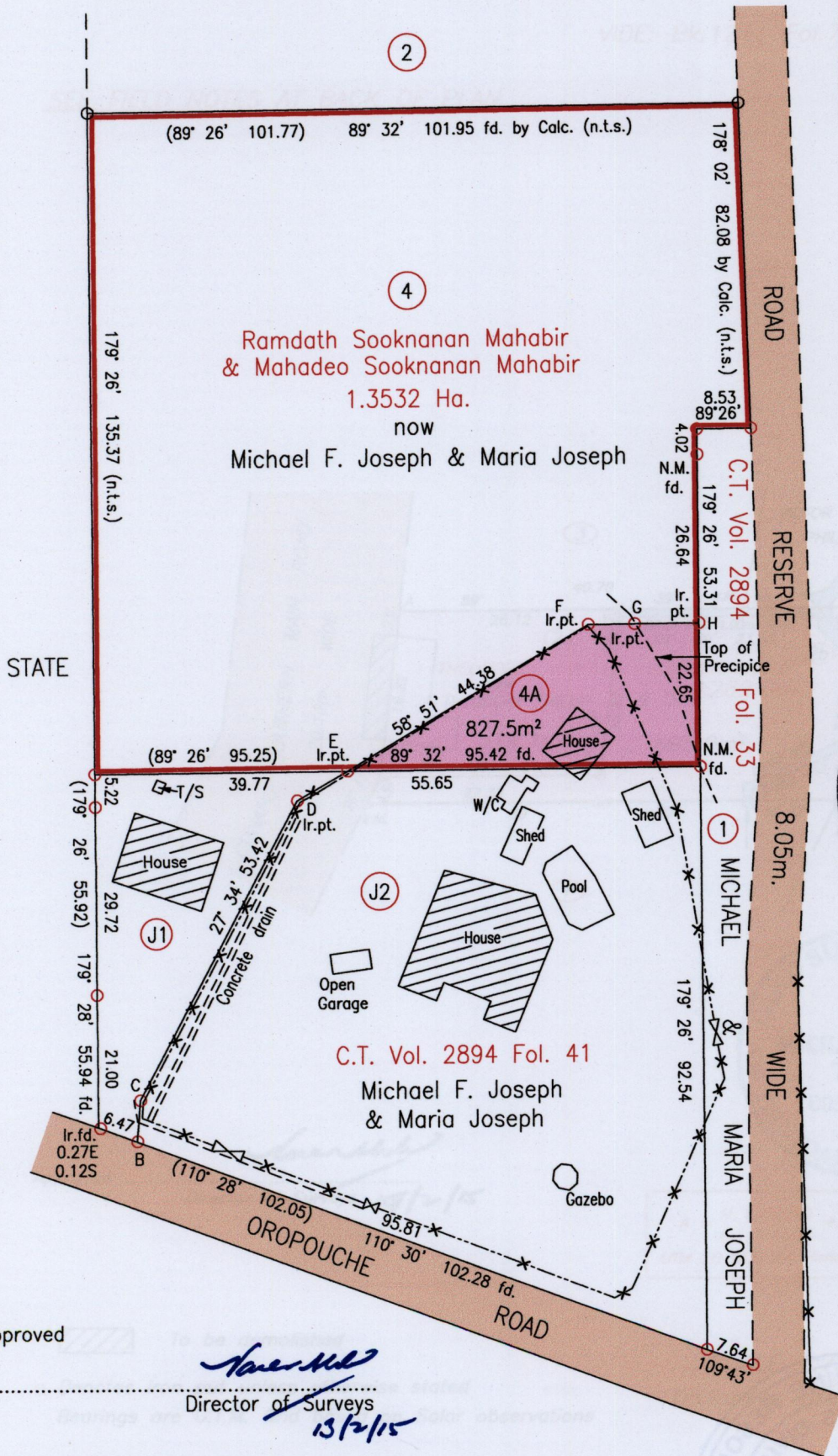
U.P.I.N. No.

County of St. Andrew

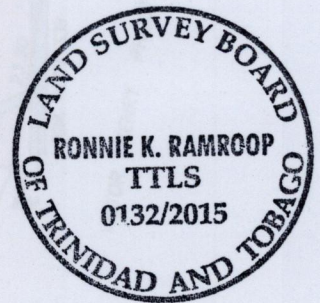
"NO. 85 OROPOUCHE ROAD, VALENCIA"

Vide	
Bk 1012:18	
Bk 1012:17	
Bk 219:225	
Bk 1249:144	

Grid North
U.T.M.



NOTE: PARCEL 4A TO BE AMALGAMATED WITH PARCEL J2



LINE	BEARING	DIST.
B - C	4° 34'	6.55
D - E	59° 39'	9.20
F - G	89° 31'	7.30
G - H	89° 31'	10.14

E	697718.91
N	1177298.37

Reliability Error ± 4.0 m. Coordinates are UTM Zone 20, Naparima 1955 from Garmin GPSmap 60CSx Handheld GPS Receiver

Approved

[Signature]
Director of Surveys
13/2/15

SCALE 1:1000

Distances are in Metres

-x-x-x- Denotes chain link wire fence

Bearings are U.T.M. Grid based on Solar Obs.

○ Denotes Iron Found unless otherwise stated

Plan of a Parcel of land coloured pink in the Ward of Manzanilla Containing eight hundred and twenty seven point five square metres Surveyed by me, with due authority, in June 2013

Certified correct in accordance with Regulation 25(1) of the Land Surveyors Regulations 1998.

Checked by

[Signature]

Entered on

Trinidad & Tobago Land Surveyor

6th February

2015

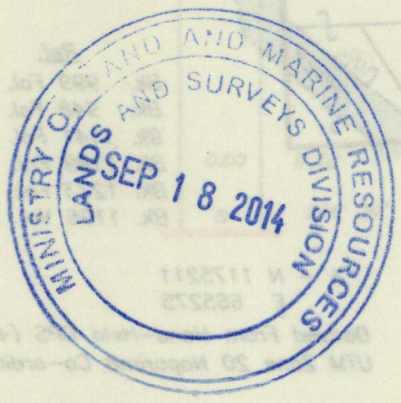
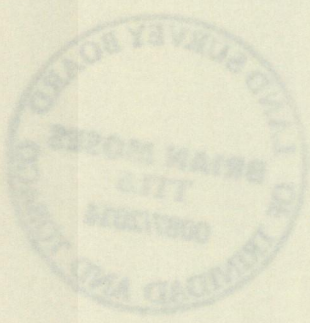
23

1656

Castrol Sheet 8-24-C
Borough of Arimo
County of St. George

U.P.R.N.
R.P.O. Vol. 31 Fol. 439
C.T. Vol. 1560 Fol. 321

U.T.M.
G.N.



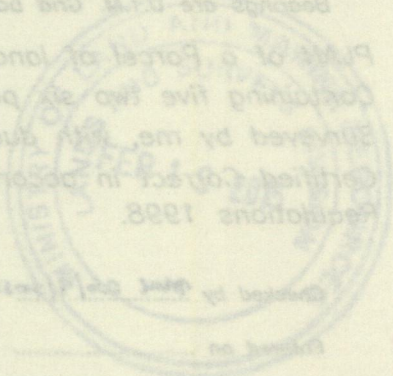
SCALE 1:750
Distances are in METERS

Part of a Parcel of land coloured pink in the Borough of Arimo containing five point seven square meters surveyed by me, the Surveyor, in May, 2012. Certified correct in accordance with Regulation 25 (1) of the Land Surveyors Regulations 1998.

o Dates from but unless otherwise stated
Bearings are U.T.M. Grid based on Solar observations

12th September 2012
Tinaid & Topo Land Surveyor (T.L.S.)
B. M. M. M.

Approved: _____
Director of Survey 17/1/12



23/6/23