

1656/2  
1056

2

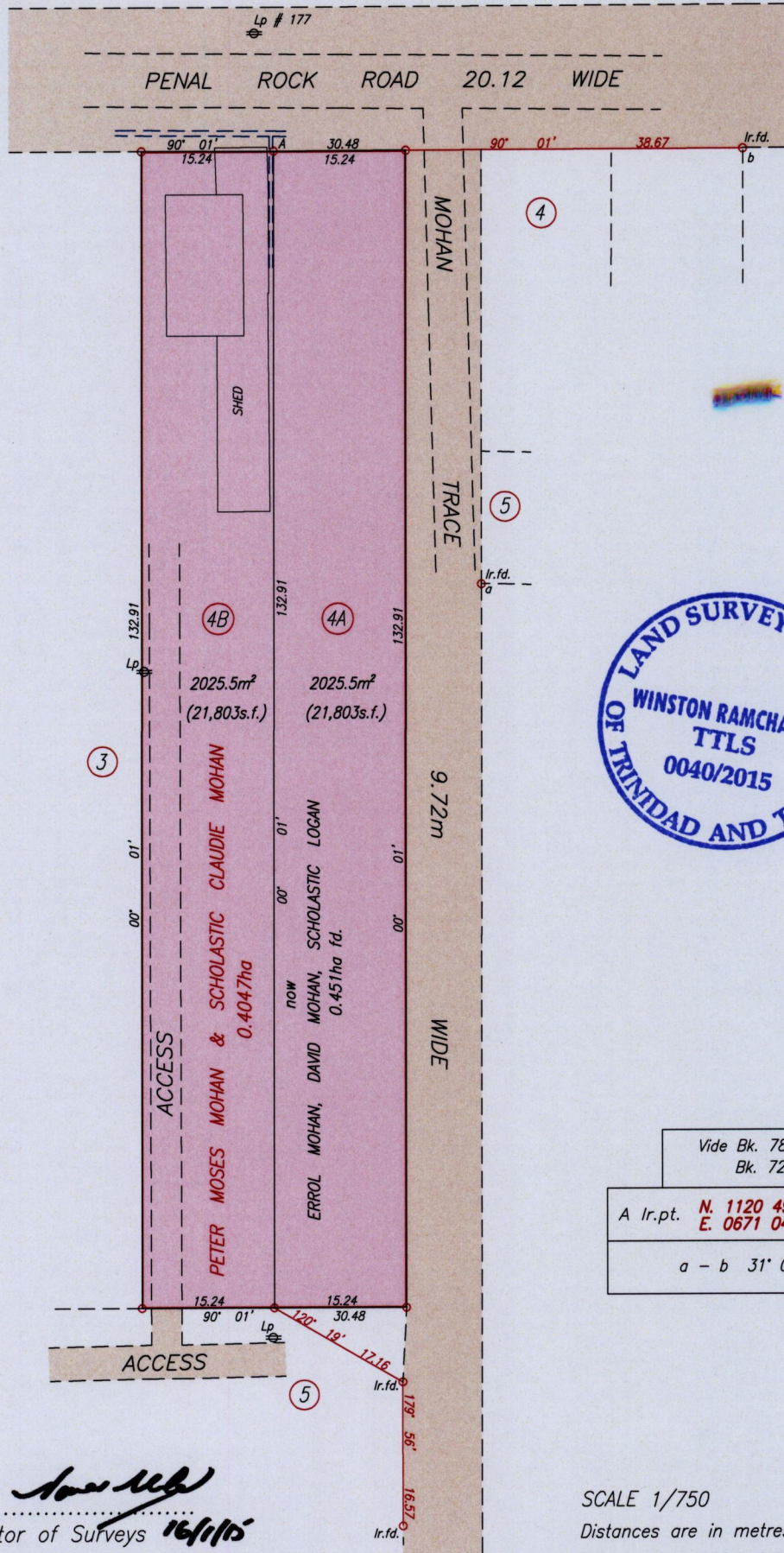
R.P.O. Vol. 123 Fol. 117

Cadastral Sheet 73C, G.18.C  
1/d

C.T Vol. 4384 Fol. 181

Ward of Siparia

County of St. Patrick



Vide Bk. 780 Fol. 158 Bk. 725 Fol. 110	
A Ir.pt.	N. 1120 496 Hand Held GPS E. 0671 046 WGS84 Zone20
a - b 31° 00' 58.21	

Approved *[Signature]*  
Director of Surveys 16/1/15

SCALE 1/750  
Distances are in metres  
● Denotes iron put unless otherwise stated

Bearings are Cassini Grid based on Solar Observations

PLAN of two Parcels of land coloured pink in the Ward of Siparia  
Containing together four thousand and fifty point nine square metres.

Surveyed by me, with due authority, in January 2013

Certified correct in accordance with Regulation 25 (1) of the Land Surveyors' Regulation 1998

Checked by.....

*[Signature]*

Entered On..... Trinidad & Tobago Land Surveyor 12<sup>th</sup> January 2015





1656/2