

1656

183

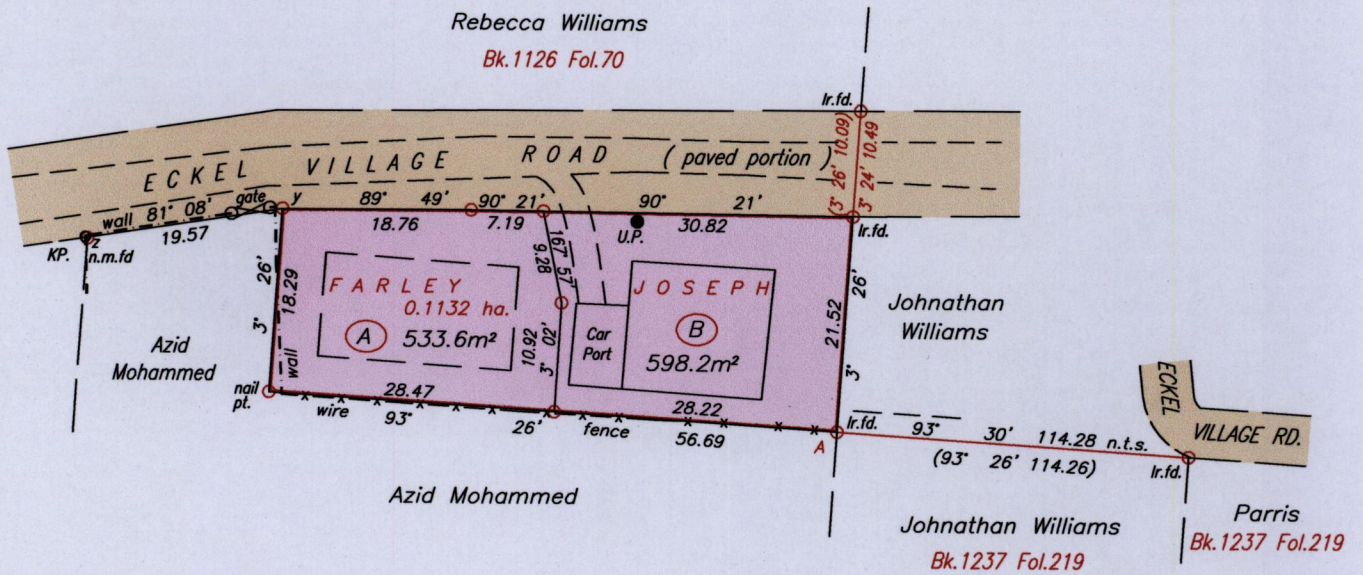
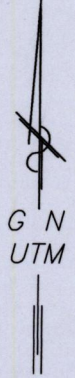
R.P.O. Vol. Fol.

54A  
Cadastral Sheet 4/a D.23.N.&O.

C.T. Vol. 3065 Fol. 195

Ward of Savana Grande  
County of Victoria

WILLIAMSVILLE



LEGEND

● U.P.	Utility Pole
n.m.fd	No mark found
KP.	King Post
n.t.s.	Not to scale

y - z	261° 08' 19.57
z - K.P.	307° 31' 0.25



y = N 1141253  
E 677431

Coordinates are +/- 6m based on the UTM Zone 20P, Naparima 1955 Datum obtained from a hand-held GPS device.

Approved .....  
Director of Surveys 18/july

- Denotes Iron put unless otherwise stated
- Bearings are Cassini Grid based on Solar observations

SCALE 1:750  
Distances are in METRES

PLAN of 2 Parcels of land coloured pink in the Ward of Savana Grande  
Containing together zero point one one three two hectare  
Surveyed by me, with due authority, on 29th June 2012

Certified correct in accordance with Regulation 25 (1) of the Land Surveyors Regulations 1998.

Checked by 12-10/11/14

*Fitzherbert Reyes* T.T.L.S.

Entered on .....

Trinidad & Tobago Land Surveyor 07 Oct 2014



0001



1656/18