

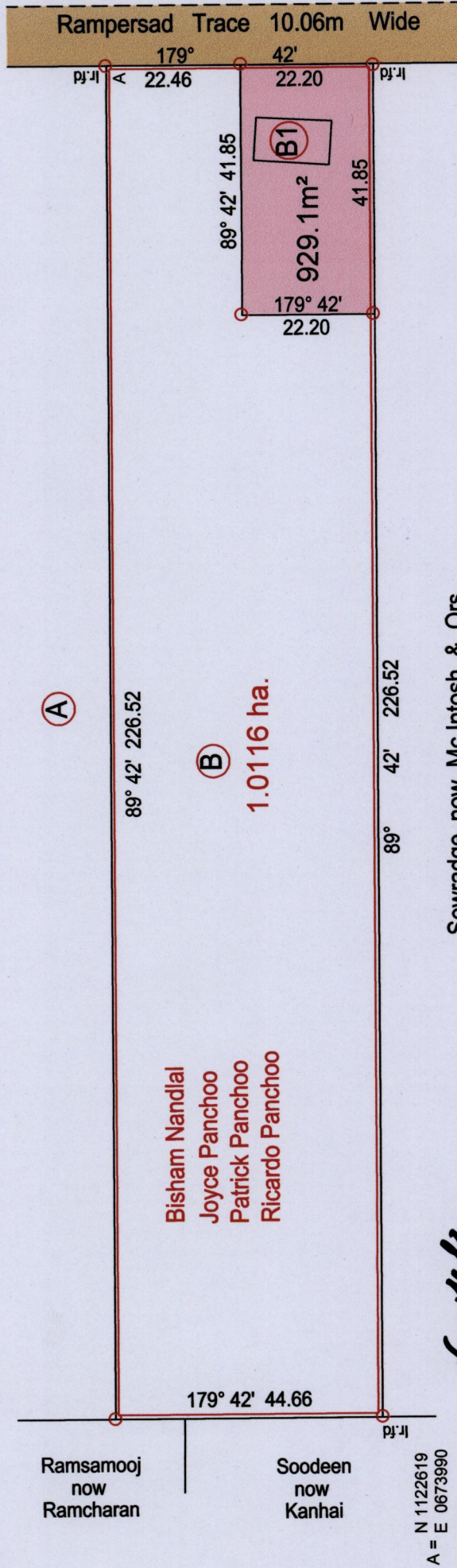
R.P.O. Vol. 279 Fol. 129

C.T. Vol. 4772 Fol. 61

Ward of Siparia

County of St. Patrick

Cadastral Sheet G.13.P. 63F
4/d



Approved 9/7/15
Director of Survey

Note: U.T.M Naparima 20 (GPS +/- 5.0m)

○ Denotes Iron put except stated otherwise.

Note: Bearings are U.T.M. grid based on solar observations

PLAN of a Parcel of land coloured pink in the Ward of Siparia

Containing nine hundred and twenty nine point one square metres

Surveyed by me, with due authority, in February 2014

Certified correct in accordance with Regulation 25 (1) of the Land Surveyors Regulations 1998.

Checked by *Shug Jaje Reemant*

Entered on Trinidad & Tobago Land Surveyor 8th July 2015



161

191/9591

191/9591

