

1656

16

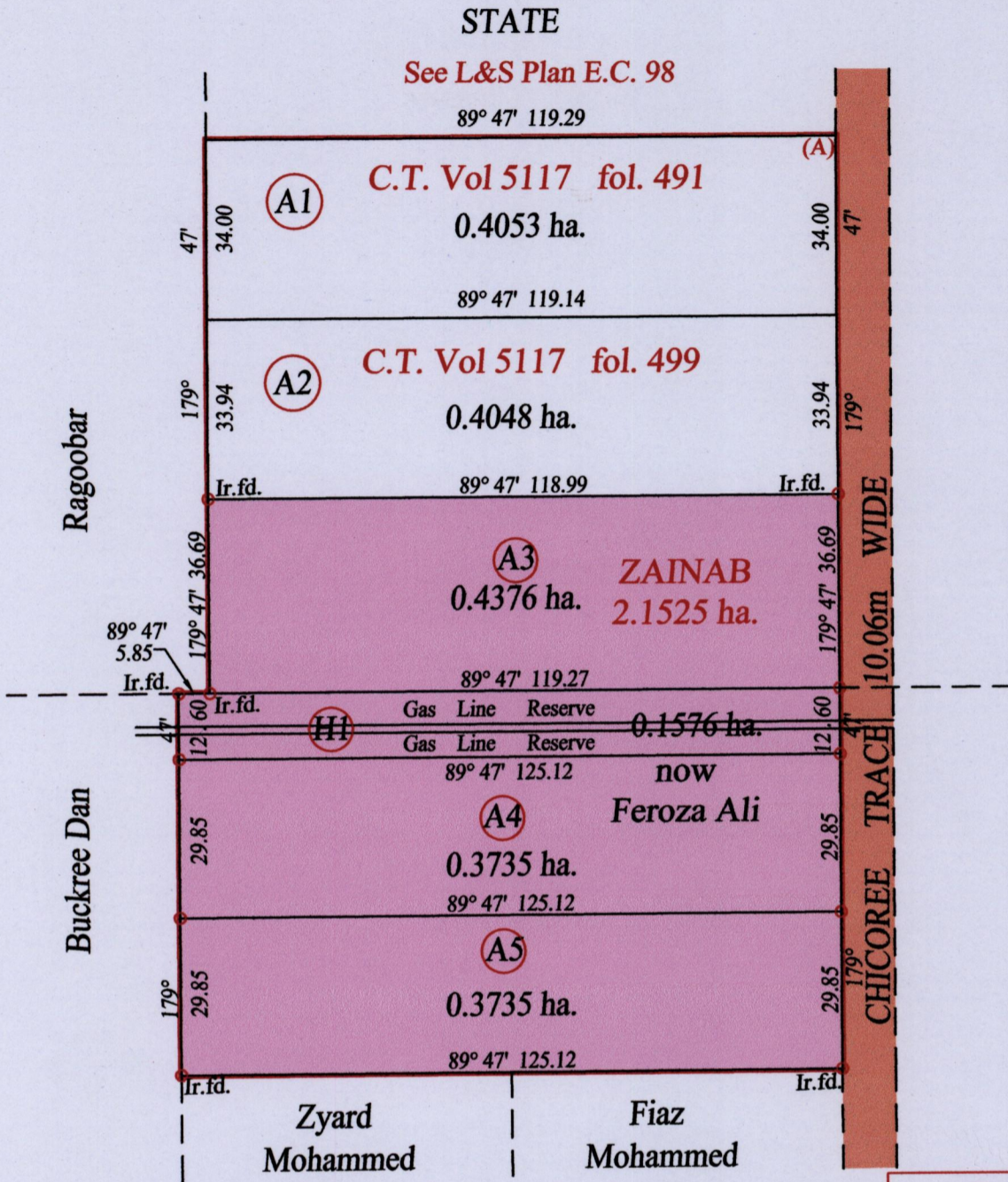
R.P.O. Vol. 46 Fol. 163

Ward of Siparia

C.T. Vol. 3264 Fol. 33

County of St. Patrick

Cadastral Sheet G.12.G 63D & 63E
2/d 1/c



Approved
Director of Surveys 22/1/15

At Station (A)
 E 0663820
 N 1126085
 Reading taken with
 Handheld G.P.S.
 U.T.M. Zone 20
 Naparima
 + 10 m.

Vide Bk. 1163 fol. 143

o Denotes Iron put except stated otherwise.

SCALE : 1:1500

Note: Bearings are U.T.M. grid based on solar observations

Distances are in metres

PLAN of 4 Parcels of land coloured pink in the Ward of Siparia

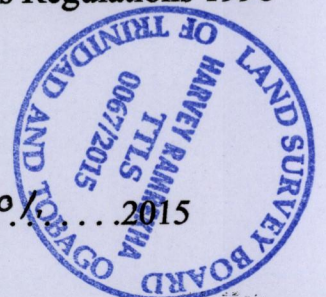
Containing together one point three four two two hectares

Surveyed by me, with due authority, in March 2013 Azim Hosein

Certified Correct in accordance with Regulation 25(1) of the Land Surveyors Regulations 1998

Checked by

Entered on Trinidad & Tobago Land Surveyor 22.01.2015





1656/16