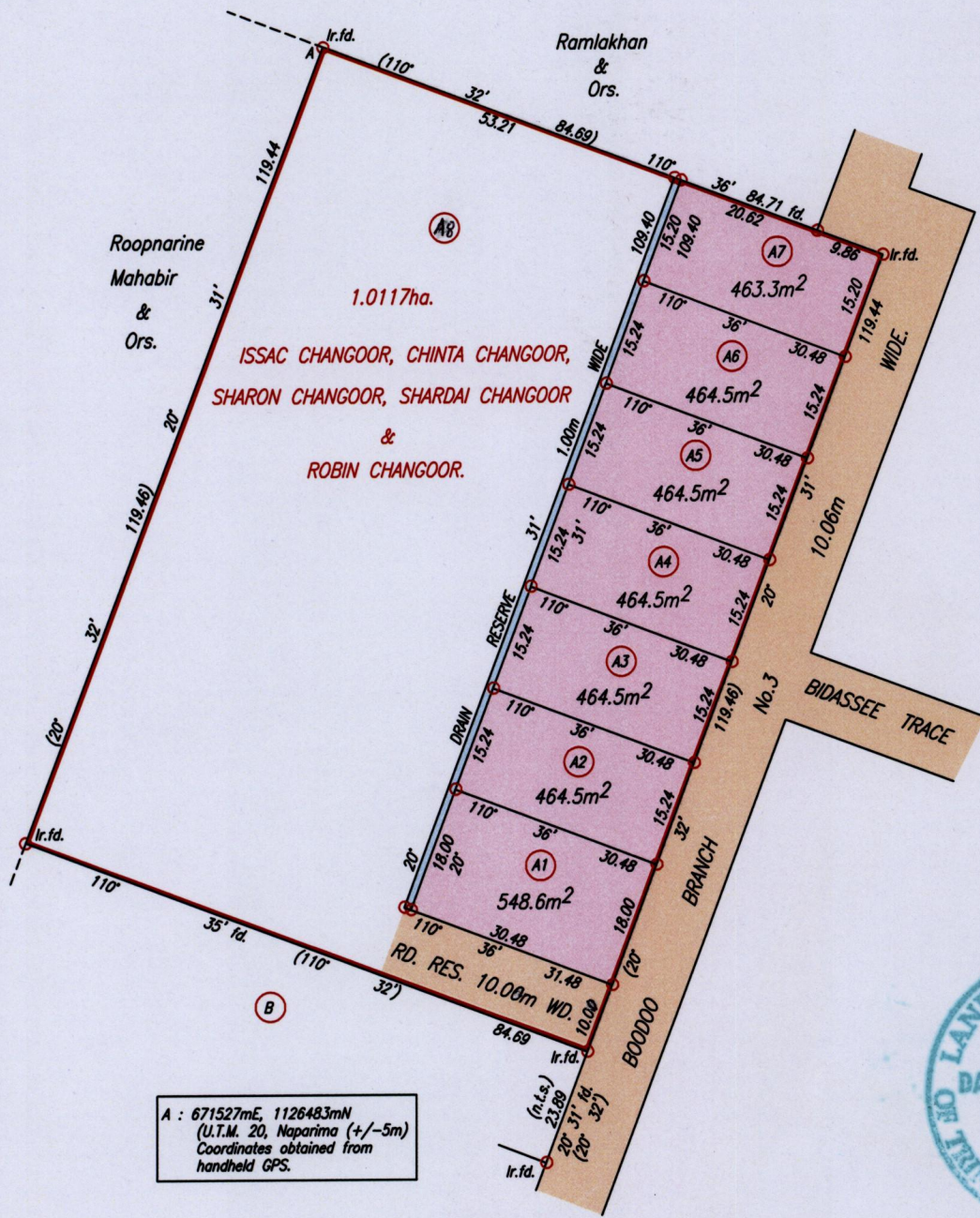


1656/156 1656

156

R.P.O. Vol. 235 Fol. 165
C.T. Vol. 5428 Fol. 375
Ref.: Bk. 419 Fol. 321

Cadastral Sheet G.13.C. 63F
1/b
Ward of Naparima
County of Victoria
Lot Nos. A1 - A7,
Boodoo Br. No. 3,
Penal.



Cassini
GRID

A : 671527mE, 1126483mN
(U.T.M. 20, Naparima (+/-5m)
Coordinates obtained from
handheld GPS.



Approved

[Signature]
Director of Surveys 2/16/15

SCALE 1:1000

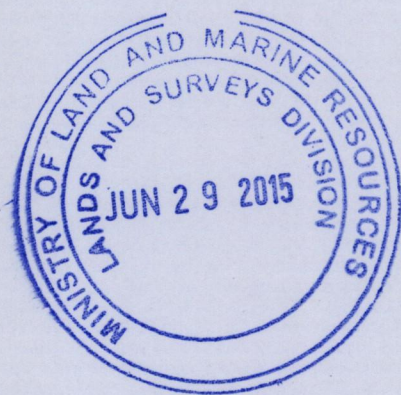
Distances are in metres

○ Denotes Iron put except otherwise stated
Bearings are Cassini Grid based on Solar Observations
PLAN of 7 Parcels of land coloured pink in the Ward of Naparima
Containing together zero point three three three four hectare
Surveyed by me, with due authority, in August, 2014
Certified Correct in accordance with Regulation 25 (1) of the Land Surveyors' Regulations 1998

Checked by. R-24/06/15

[Signature]

Entered on. Trinidad & Tobago Land Surveyor. 8th May 2015.



1656/156