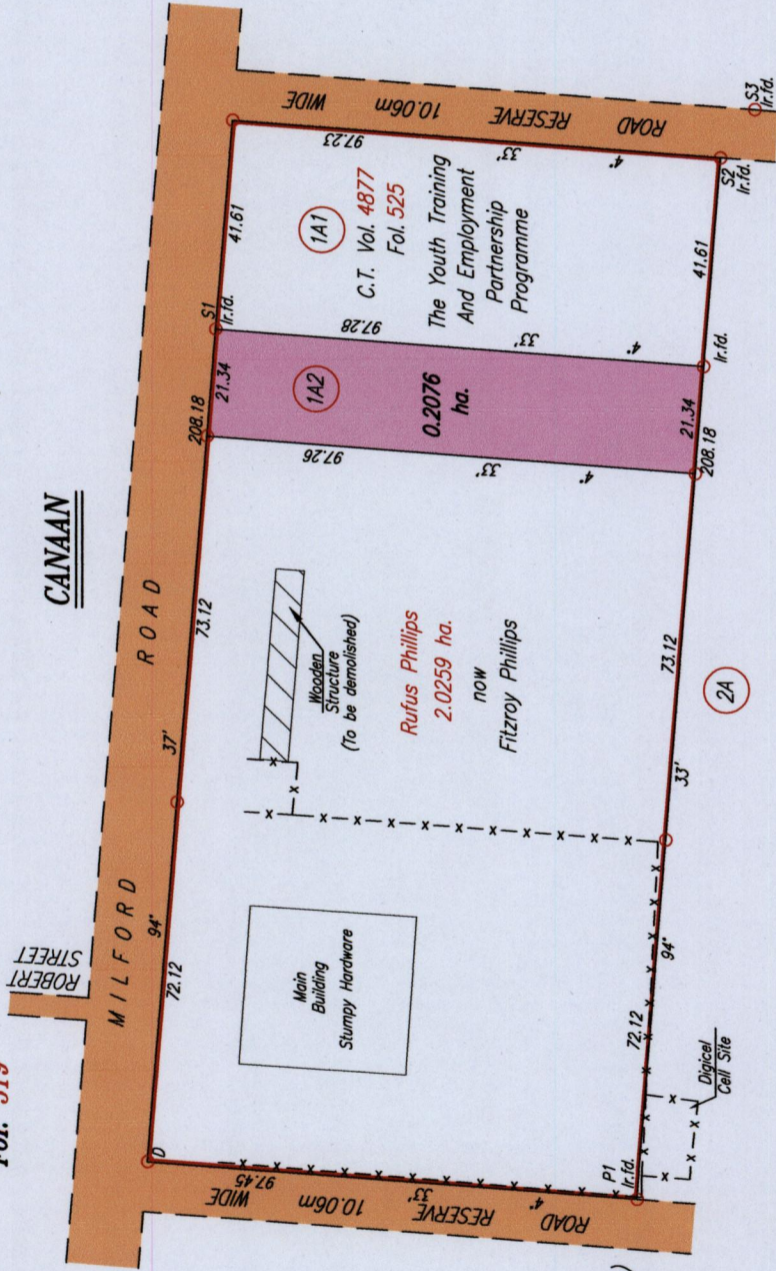


R. P. O. Vol. 239 Fol. 429
 C.T. Vol. 2668 Fol. 519

656/151

Cadastral Sheet I.21.B&C 1E
 6/b/4
 Ward of Tobago
 Parish of St. Patrick



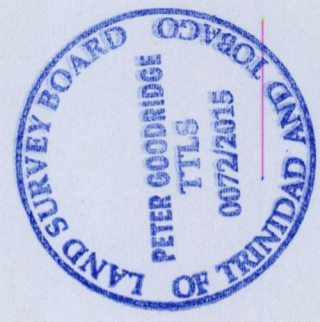
Coordinates of P1 (I.r.f.d.):
 0738785mE, 1234117mN
 U.T.M. 20 WGS 84 (+/- 5.00m)
 G.P.S. Direct Observation

LEGEND

From - To	Bearing	Distance
S2 - S3	125° 32'	11.76



Reference: See Plan D.H. 68



SCALE 1: 1500
 Distances are in METRES

Approved
 Director of Surveys

- Denotes Iron put except where otherwise stated
- Bearings are Cassini Grid based on Solar Observations

PLAN of a Parcel of land coloured pink in the Ward of Tobago
 Containing zero point two zero seven six hectares
 Surveyed by me, with due authority, on the 24th January 2010

Certified Correct in accordance with Regulation 25 (1) of The Land Surveyors Regulations 1998,

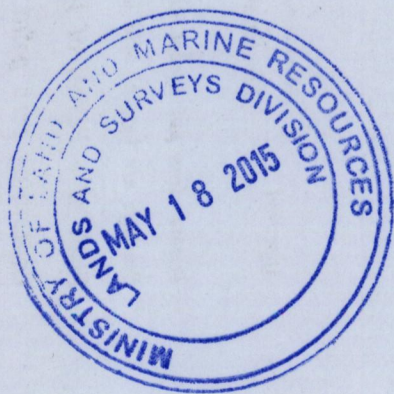
Checked by *M. M. 1/6/2015*
 Entered on

[Signature]
 TTLS

Trinidad & Tobago Land Surveyor
 C:\LESS 2014\TOBAGO\PHILLIP.FITZROY.MILFORD RD.dwg FILE NO: TP070
 15 JAN 2015

1656

151



12/18/15