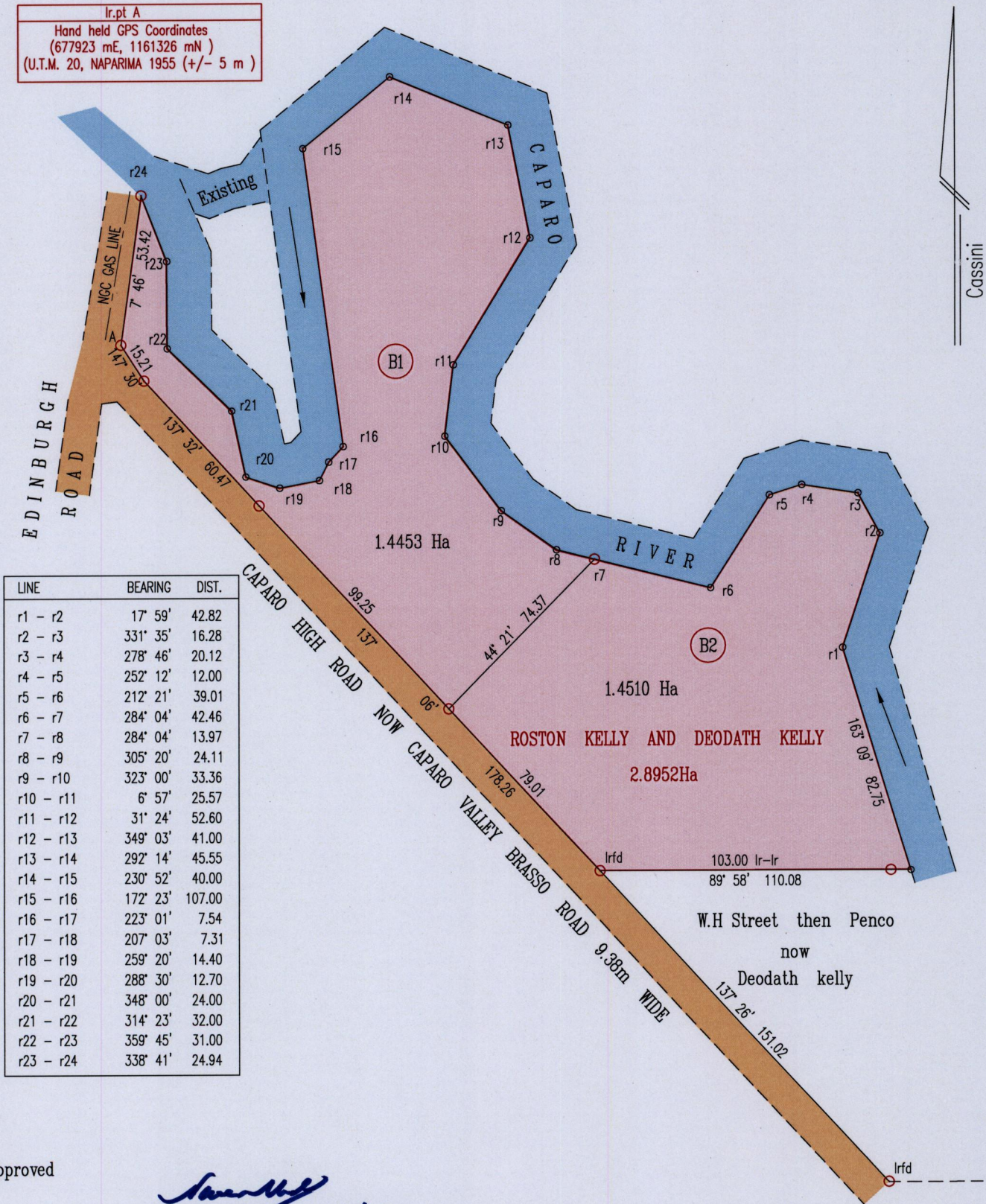


Ir.pt A
Hand held GPS Coordinates
(677923 mE, 1161326 mN)
(U.T.M. 20, NAPARIMA 1955 (+/- 5 m))



LINE	BEARING	DIST.
r1 - r2	17° 59'	42.82
r2 - r3	331° 35'	16.28
r3 - r4	278° 46'	20.12
r4 - r5	252° 12'	12.00
r5 - r6	212° 21'	39.01
r6 - r7	284° 04'	42.46
r7 - r8	284° 04'	13.97
r8 - r9	305° 20'	24.11
r9 - r10	323° 00'	33.36
r10 - r11	6° 57'	25.57
r11 - r12	31° 24'	52.60
r12 - r13	349° 03'	41.00
r13 - r14	292° 14'	45.55
r14 - r15	230° 52'	40.00
r15 - r16	172° 23'	107.00
r16 - r17	223° 01'	7.54
r17 - r18	207° 03'	7.31
r18 - r19	259° 20'	14.40
r19 - r20	288° 30'	12.70
r20 - r21	348° 00'	24.00
r21 - r22	314° 23'	32.00
r22 - r23	359° 45'	31.00
r23 - r24	338° 41'	24.94

Approved

[Signature]
Director of Surveys 22/10/15

SEE PLAN JD 192

SCALE 1:2000

Distances are in Metres

Bearings are Cassini Grid based on Solar Obs.

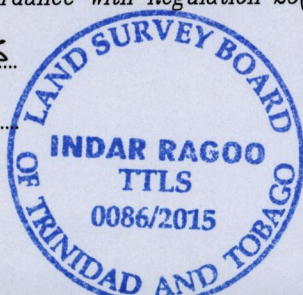
○ Denotes Iron Put unless otherwise stated

Plan of 2 Parcels of land coloured pink in the Ward of Chaguanas
Containing together two point eight nine six three hectares
Surveyed by me, with due authority, in August 2012

Certified correct in accordance with Regulation 25(1) of the Land Surveyors' Regulations 1998.

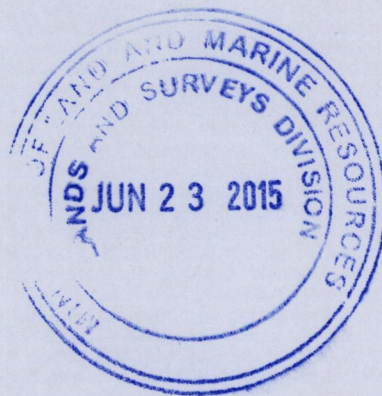
Checked by *[Signature]* 12-24/06/15

Entered on



[Signature] Indar Ragoo

Trinidad & Tobago Land Surveyor 21/06/2015



1656/150