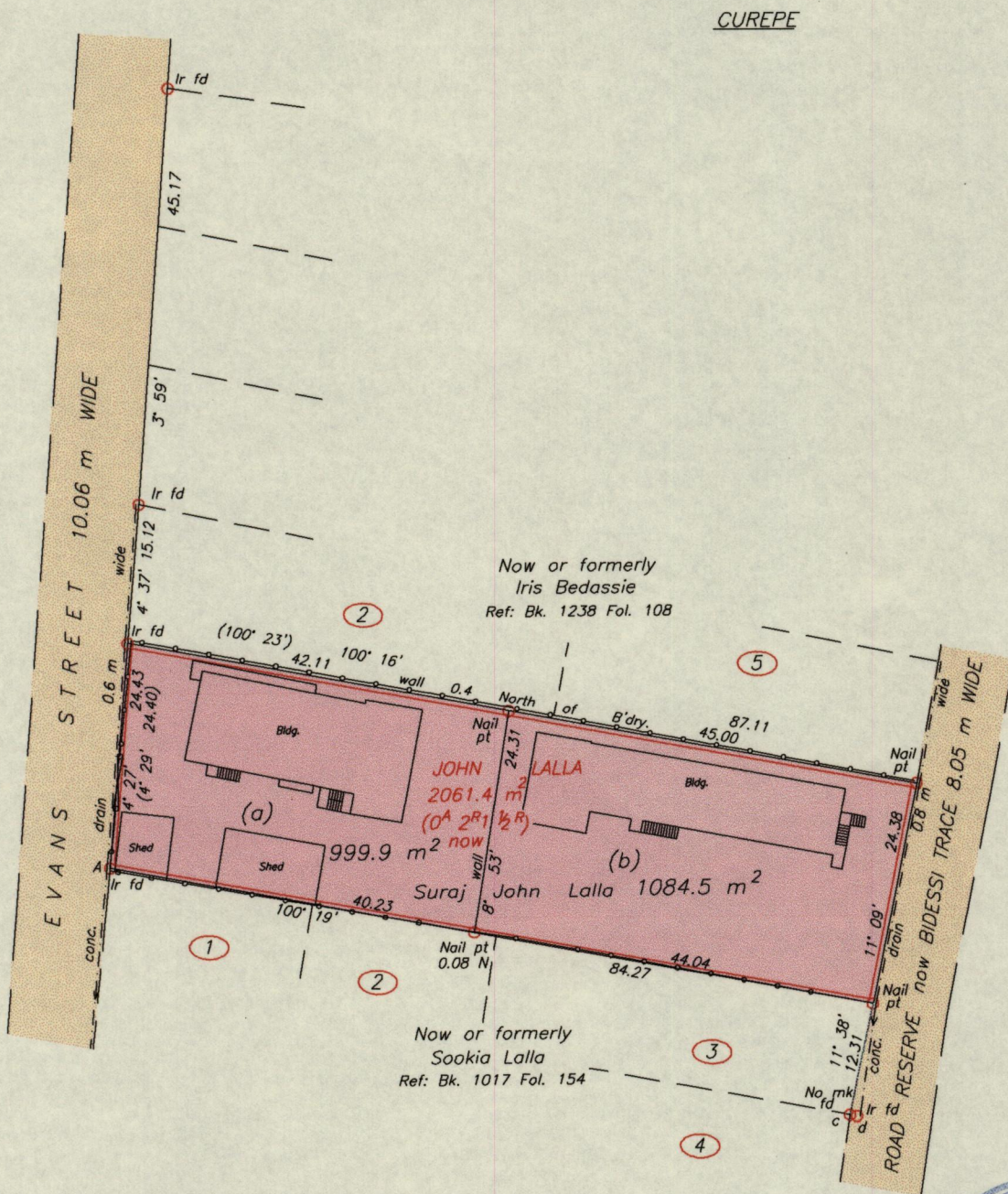


1656

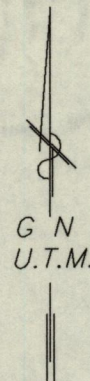
138

R.P.O. 590 Fol. 125
C.T. 1607 Fol. 275

Cadastral Sheet B.18.M. ^{24A}/_{1/c}
Ward of Tacarigua
County of St. George

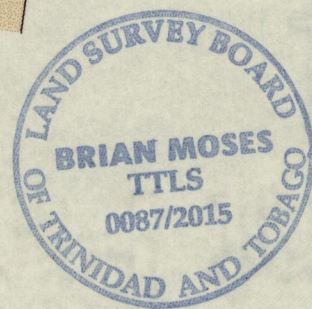


CUREPE



A - N 1176126
E 674525
Derived From Hand-Held GPS (+/-5 m)
UTM Zone 20 Naparima Co-ordinates

Ref.
Bk. 1017 Fol. 154
Bk. 1238 Fol. 108
Bk. 963 Fol. 217
Bk. 963 Fol. 218



Approved
Director of Surveys

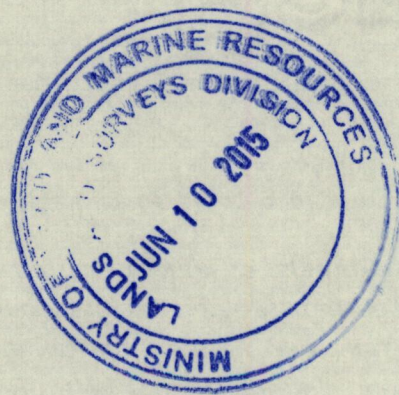
○ Denotes Iron put unless otherwise stated
Bearings are U.T.M. grid based on Solar observations

SCALE 1:750
Distances are in METRES

PLAN of two Parcels of land coloured pink in the Ward of Tacarigua
Containing together two zero eight four point four square metres
Surveyed by me, with due authority, in March, 2014
Certified Correct in accordance with Regulation 25 (1) of the Land Surveyors
Regulations 1998.

Entered By:
Date:

Brian Moses
Trinidad & Tobago Land Surveyor (T.T.L.S.)
10th June 2015



1656/138