

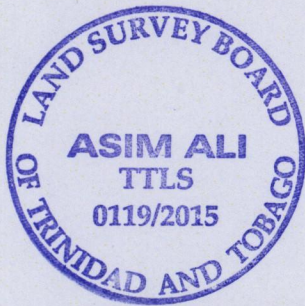
1656

136

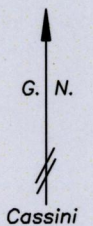
R.P.O. Vol. 122 fol. 555

C.T. Vol. 388 fol. 11

Cadastral Sheet G.13.J&N 63F/3/c
Ward of Siparia
County of St. Patrick



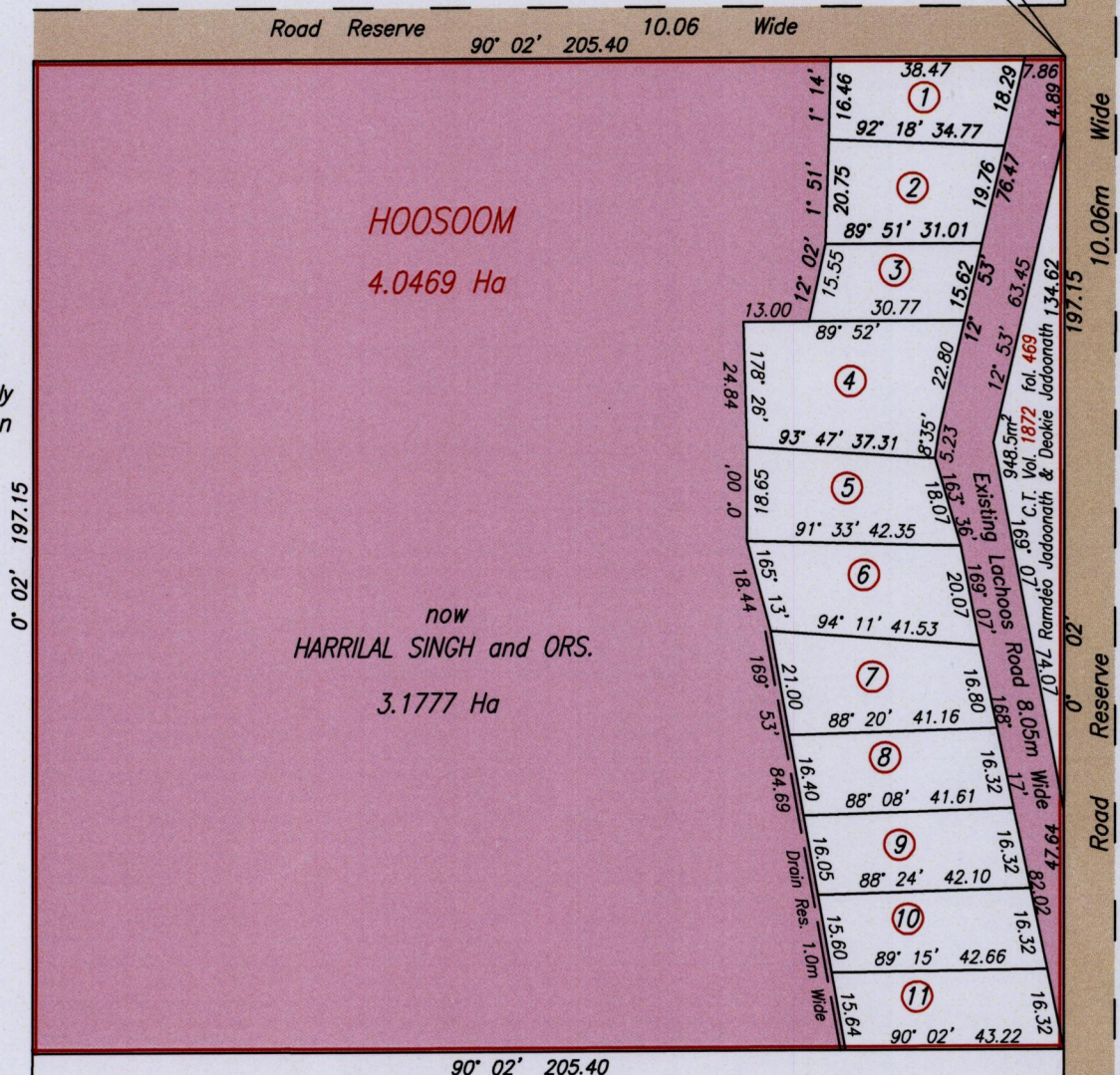
Remaining Portion Plan



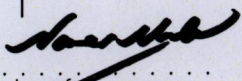
formerly
Sookoo
now or formerly
Sahadeo & Mahadeo

UTM (Nap.) co-ord
(Handheld GPS) +/-5m
N 1123274 m
E 670193 m

formerly
STATE
now or formerly
T.J. Perryman



formerly
STATE
now or formerly
Ernest Harry

Approved 
Director of Surveys

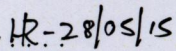
Vide Bk. 1273 fol. 128
Bk. 1179 fol. 70
Bk. 1003 fol. 18

①	629.2m ²	Sagar Kaisersingh & Shanti Kaisersingh	C.T. Vol. 3246 fol. 353
②	659.4m ²	Harrilal Kaiser & Jasodia Kaiser	C.T. Vol. 3246 fol. 361
③	469.8m ²	Rahena Boodoo	C.T. Vol. 3246 fol. 369
⑤	711.2m ²	Bhimsingh Kaiser Singh & Lilautie Kaiser Singh	C.T. Vol. 3246 fol. 377
⑥	777.0m ²	Gaynanand Kaiser Singh & Donyawatie Kaiser Singh	C.T. Vol. 3246 fol. 385
④	1056.3m ²	Haimragie Singh & Dhanraj Siewharack	C.T. Vol. 4245 fol. 399
⑦	763.1m ²	Gaynanand Kaisersingh & Ors.	C.T. Vol. 4245 fol. 447
⑧	668.4m ²	Rajwantiya Boodoo & Kimberly D. Siewharack	C.T. Vol. 4361 fol. 461
⑨	668.5m ²	Rahena Boodoo & Larry J. Boodoo	C.T. Vol. 4245 fol. 463
⑩	666.5m ²	Sylvie Nanan & Ors.	C.T. Vol. 4245 fol. 415
⑪	674.1m ²	Angie Baby Ragbir & Ors.	C.T. Vol. 4245 fol. 431

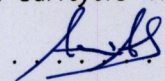
Bearings are Cassini and based on solar observations

SCALE 1:1500
Distances are in metres

PLAN of four point zero four six nine hectares originally transferred to HOOSOOM showing a portion coloured pink and containing three point one seven seven seven hectares being the remainder after twelve previous transfers of other portions of the land and occupation by road. Prepared by me, with due authority, in December 2014. Certified correct, in accordance with Regulation 25 (1) of The Land Surveyors' Regulations 1998.

Checked By  28/05/15

Entered On


Trinidad & Tobago Land Surveyor. 25/May/2015



1656/136