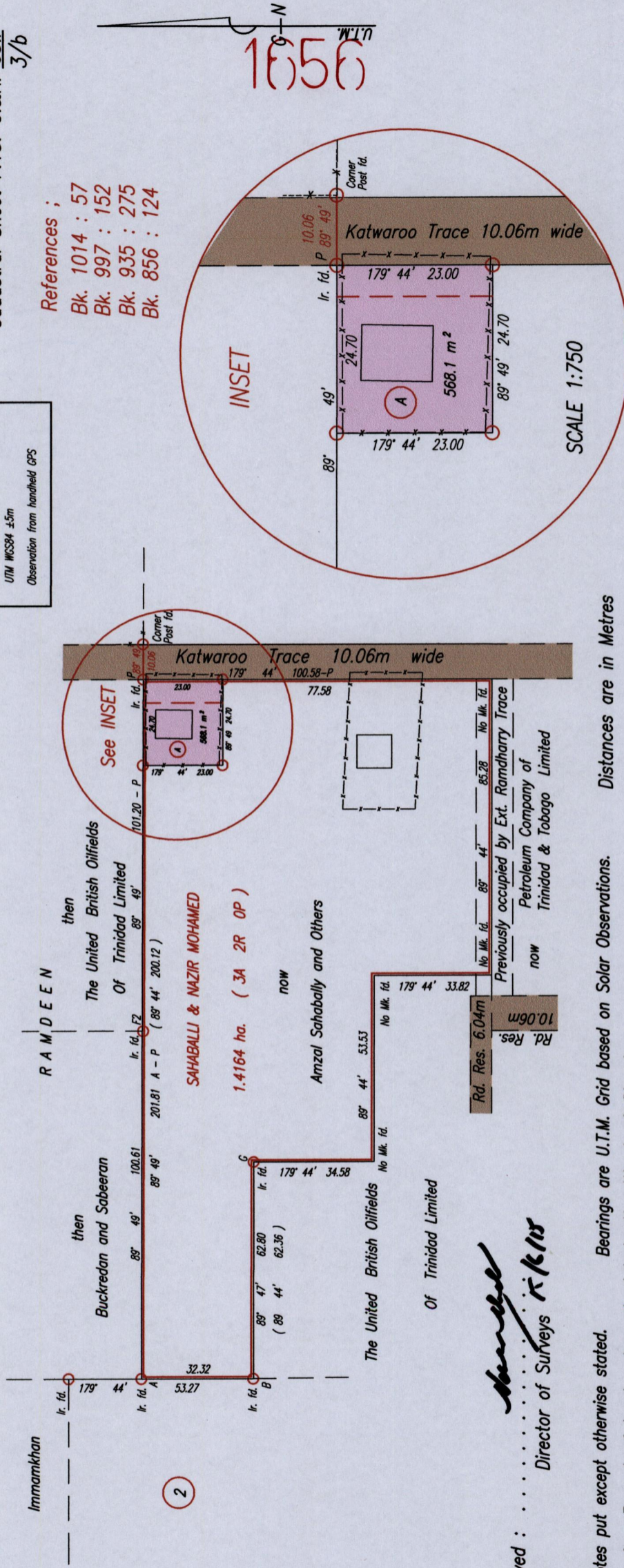


R.P.O. Vol. 183 Fol. 315
 C.T. Vol. 1851 Fol. 295

Ward of Siparia
 County of St. Patrick
 Cadastral Sheet F.13. G.&K. 63.F
 3/b

Ir. Id. P. 671150m E ; 1124911m N
 UTM WCS84 ±5m
 Observation from handheld GPS



2

Approved : *[Signature]*
 Director of Surveys K.R.N.

○ denotes put except otherwise stated. Bearings are U.T.M. Grid based on Solar Observations. Distances are in Metres
 Plan of a Parcel of land coloured pink in the Ward of Siparia
 Containing five hundred and sixty eight point one square metres.
 Surveyed by me, with due authority, in April 2013.
 Certified Correct in accordance with Regulation 25(1) of the Land Surveyors' Regulations 1998.

Checked by *[Signature]*
 18-26/05/15

Entered :
 Trinidad & Tobago Land Surveyor 18th March 2015



SCALE 1:1500 —x—x—x— Wire Fence



1656/135