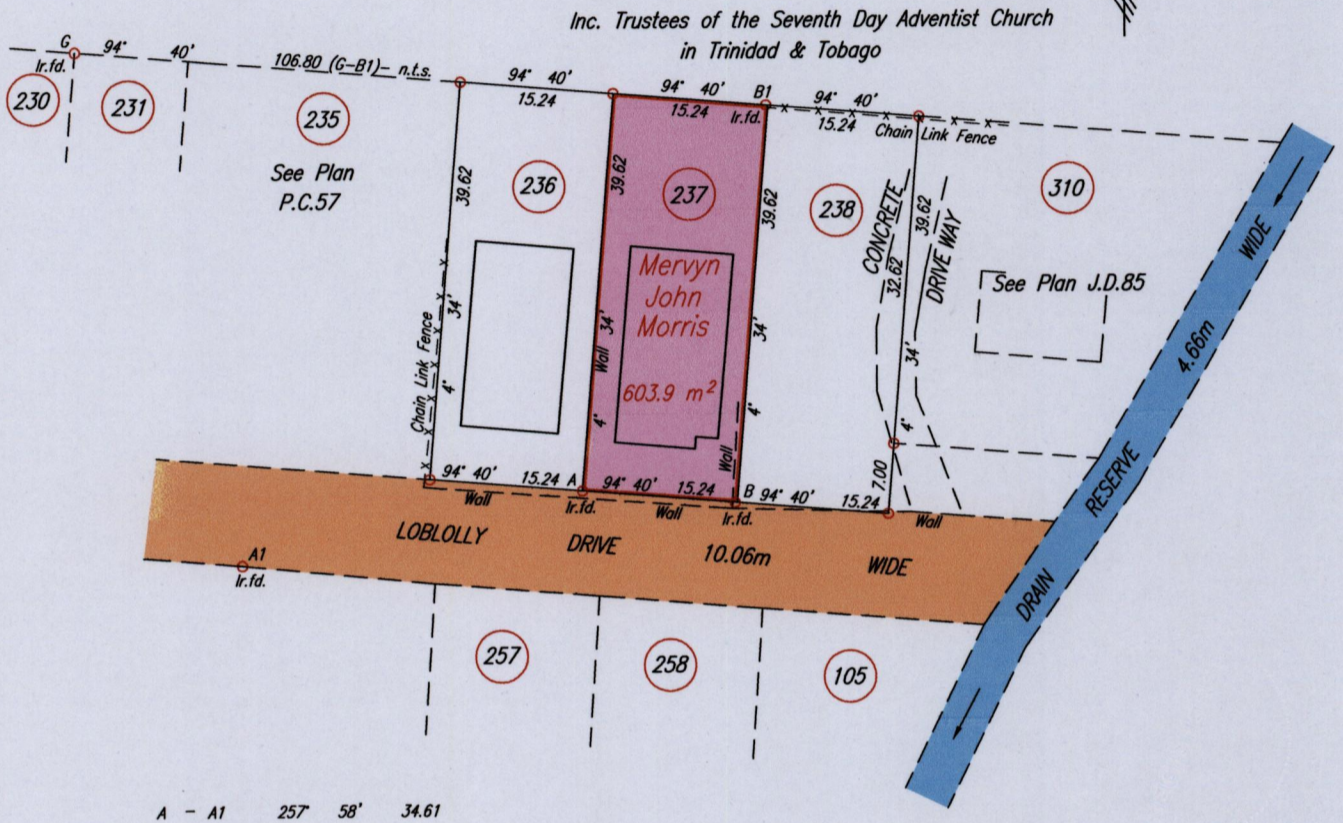


1656

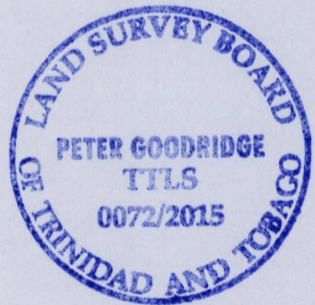
132

RED HILL - D'ABADIE

G N  
Cassini



A - A1 257 58' 34.61



Coordinate of B (I.r.f.d.): 0684416mE, 1174849mN  
 U.T.M. 20 WGS 84 (+/- 6.00m)  
 G.P.S. Direct Observation

Approved . . . . .  
 Director of Surveys

SCALE 1:750

Distances are in METRES

○ Denotes Iron put except where otherwise stated

Bearings are Cassini Grid based on Solar Observations

PLAN of a Parcel of land coloured pink in the Ward of Arima

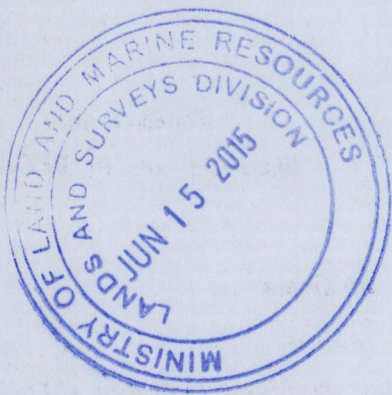
Containing six hundred and three point nine square metres

Redefined by me, with due authority, on the 3rd June 2011 and 2nd July 2011

Certified Correct in accordance with Regulation 25 (1) of The Land Surveyors Regulations 1998,

Checked by . . . . .  
 TTLS

Entered on . . . . .



1656/132