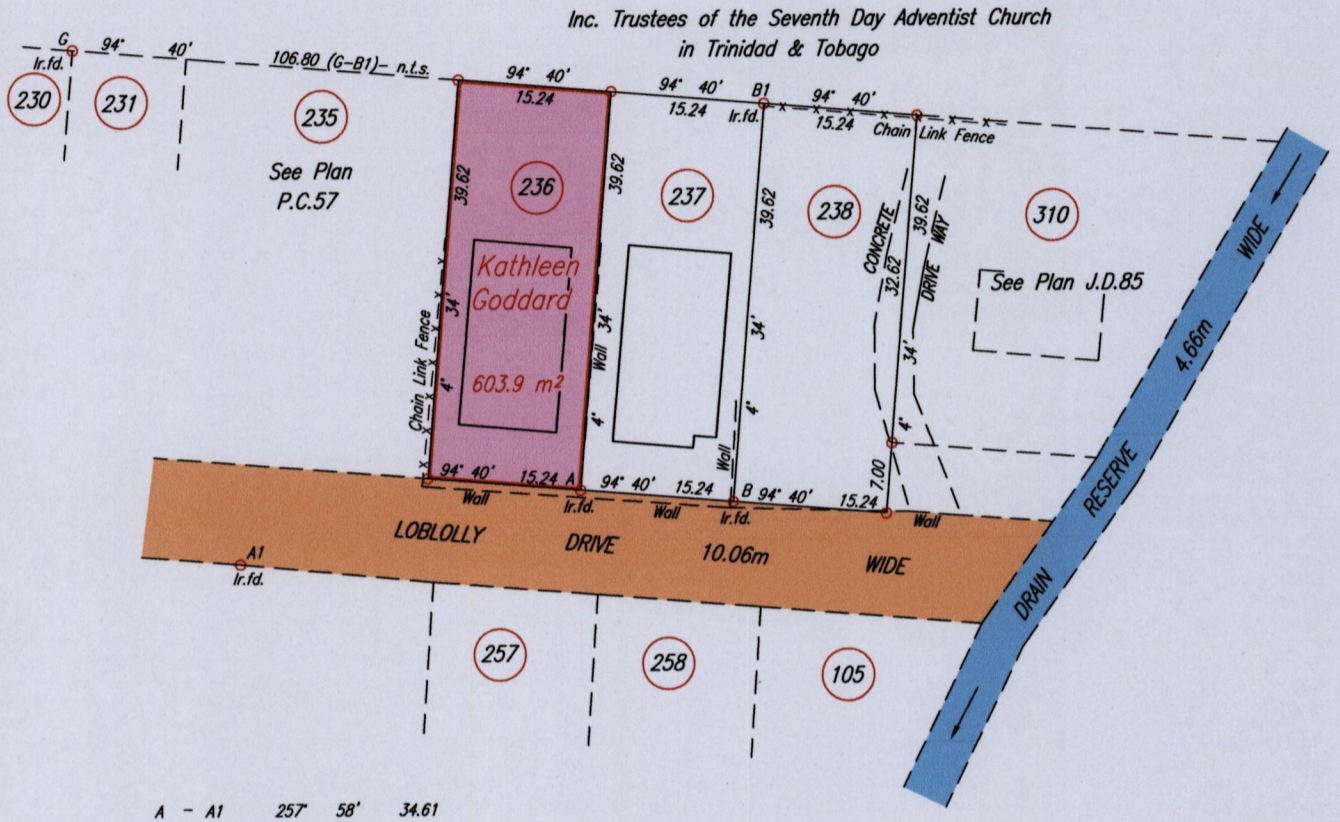
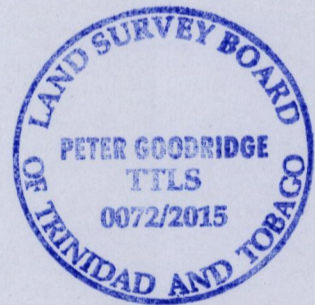


RED HILL - D'ABADIE



A - A1 257 58' 34.61

Coordinate of B (Ir.fd.): 0684416mE, 1174849mN  
U.T.M. 20 WGS 84 (+/- 6.00m)  
G.P.S. Direct Observation



Approved . . . . .  
Director of Surveys 15/6/16

SCALE 1:750  
Distances are in METRES

- Denotes Iron put except where otherwise stated
- Bearings are Cassini Grid based on Solar Observations

PLAN of a Parcel of land coloured pink in the Ward of Arima  
Containing six hundred and three point nine square metres

Redefined by me, with due authority, on the 3rd June 2011 and 2nd July 2011

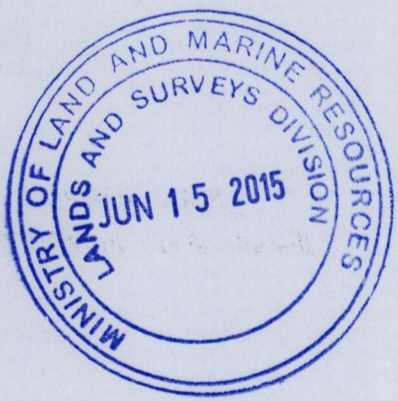
Certified Correct in accordance with Regulation 25 (1) of The Land Surveyors Regulations 1998,

Checked by . . . . . TTLS

Entered on . . . . .

Trinidad & Tobago Land Surveyor  
C:\LESS 2014\TRINIDAD\MENDOZA,VALERIE-D'ABADIE.dwg.

10th June 2015  
FILE NO: M103, cr.ref: G025&V001



1656/131