

R.P.O. Vol. 426 Fol. 427

C.T.Vol. 2007 Fol. 269

Cadastral Sheet G.15.A.  $\frac{64E}{1/a}$

Ward of Savana Grande

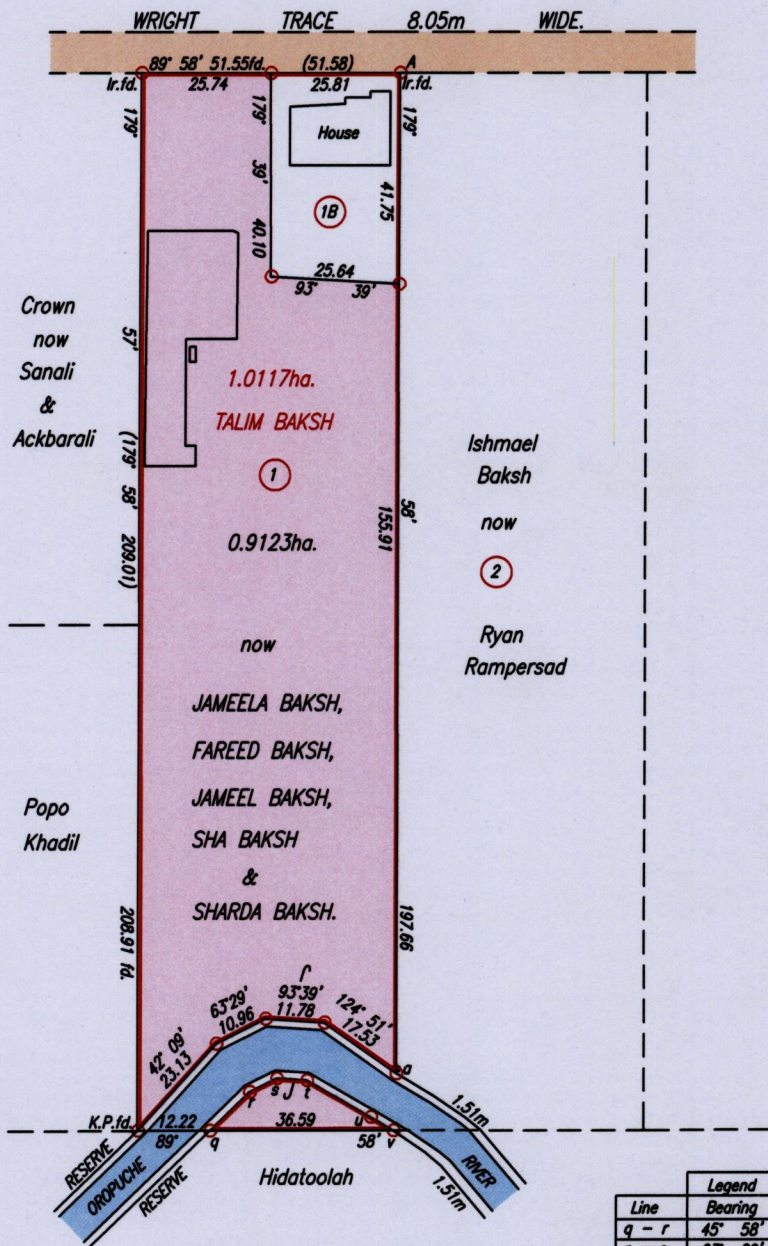
County of Victoria

Lot 1

Wright Trace,  
Barrockpore.

Ref.: Bk. 985 Fol. 265

Note : Plot (1B) to be amalgamated to Plot (2)



A Ir.f.d. : 681382mE, 1127525mN  
 (U.T.M. 20, Naparima (+/-5m)  
 Coordinates obtained from  
 handheld GPS.



Legend		
Line	Bearing	Distance
q - r	45° 58'	11.00
r - s	63° 29'	6.08
s - t	93° 39'	5.99
t - u	119° 54'	14.72
u - v	120° 12'	5.19

Note : a □ = Conc. Post fd.



Approved

*[Signature]*  
 Director of Surveys 20/1/15

SCALE 1 : 1500

Distances are in metres

○ Denotes Iron put except otherwise stated  
 Bearings are Cassini Grid based on Solar Observations  
 PLAN of a Parcel of land coloured pink in the Ward of Savana Grande  
 Containing zero point nine one two three hectare  
 Surveyed by me, with due authority, in July, 2014  
 Certified Correct in accordance with Regulation 25 (1) of the Land Surveyors' Regulations 1998

Checked by . . . . .

*[Signature]*

Entered on . . . . . Trinidad & Tobago Land Surveyor. . . . . 4th January . . . . . 2015.

1004



1656/13