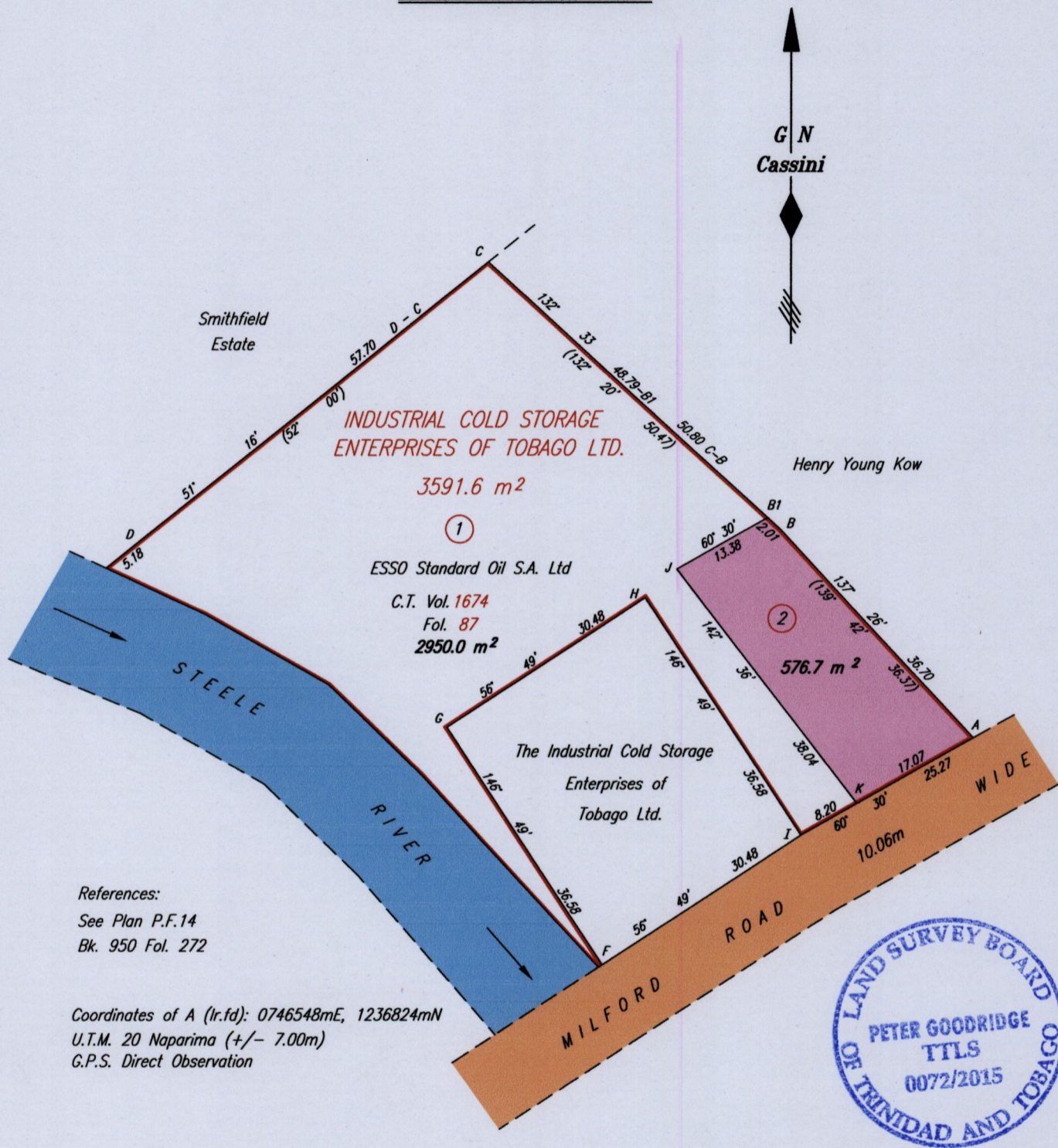


1656/128

1656

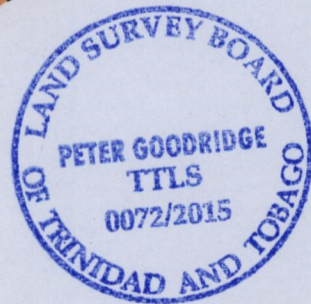
128

REMAINING PORTION PLAN



References:  
See Plan P.F.14  
Bk. 950 Fol. 272

Coordinates of A (l.r.fd): 0746548mE, 1236824mN  
U.T.M. 20 Naparima (+/- 7.00m)  
G.P.S. Direct Observation



SCALE 1:750

Distances are in METRES

Approved . . . *[Signature]*  
Director of Surveys *[Signature]*

Plan of three thousand five hundred and ninety one point six square metres  
originally transferred to Industrial Cold Storage Enterprises of Tobago Ltd.  
showing a portion coloured pink and containing five hundred and seventy six point seven square metres  
being the remainder after one previous transfer of another portion of the land  
In accordance with Regulations 25 (1) of The Land Surveyors' Regulations 1998,  
I certify that this plan represents the remaining portion.

Checked by *[Signature]* 22/5/2015

*[Signature]* . . . . . TTLS

Entered on . . . . .



1656/128