

1656

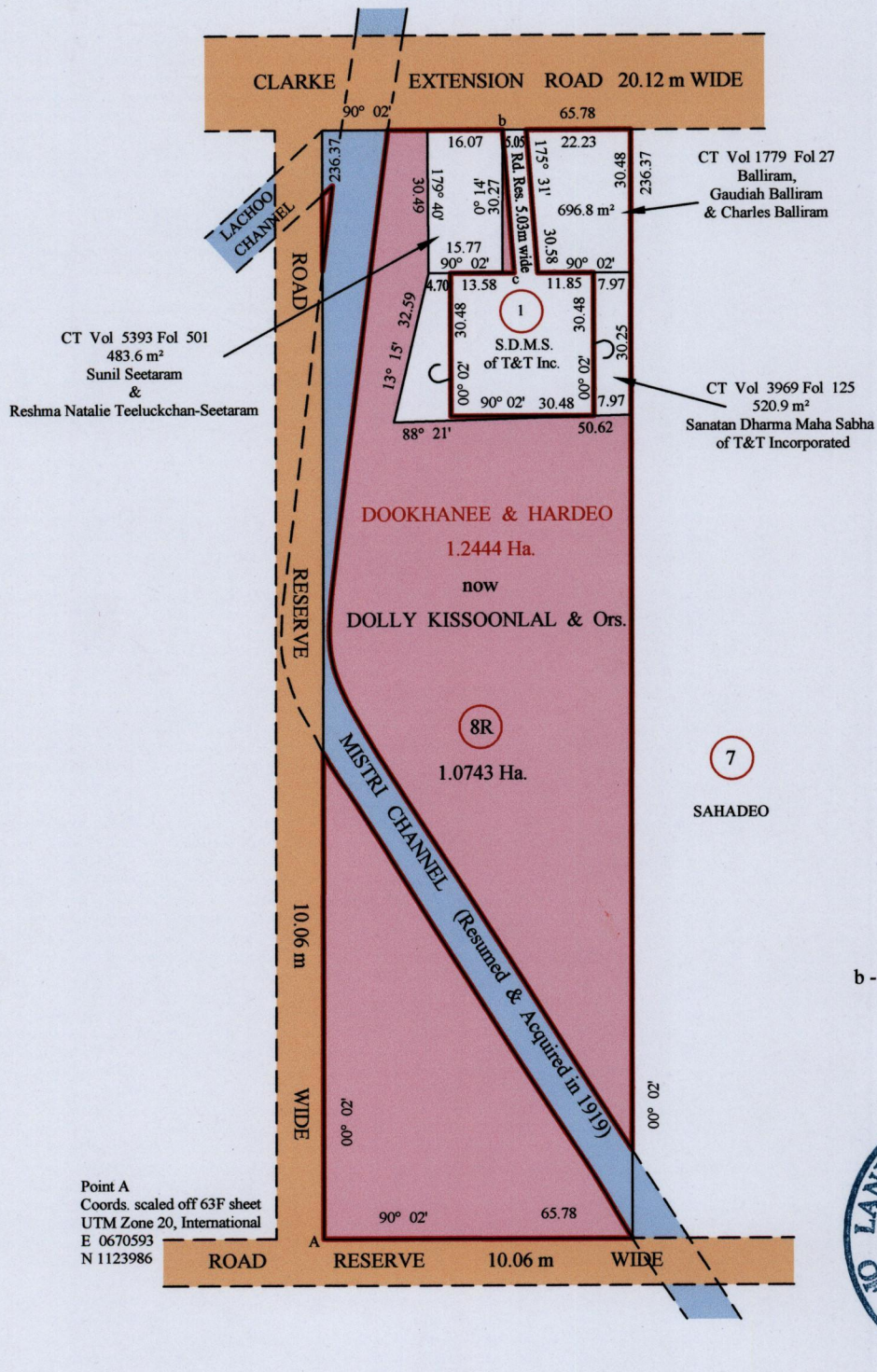
120

RPO Vol 170 Fol 13  
CT Vol 1196 Fol 309

Remaining Portion Plan

Cadastral Sheet G.13.K., 63F  
County of St. Patrick 3/b  
Ward of Siparia  
PENAL

Refs. Bk 897 Fol 32  
Bk 1238 Fol 221



Approved

Director of Surveys

*[Handwritten signature]*  
26/5/15

Bearings are Cassini Grid  
Distances are in Metres  
SCALE 1/1500

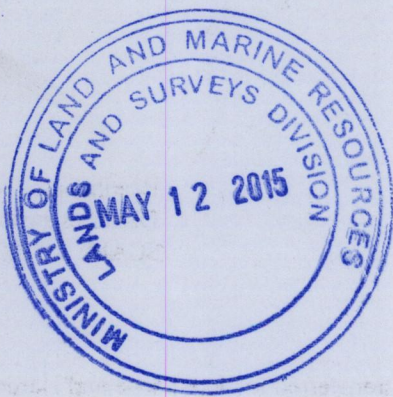
PLAN of one point two four four four hectares of land, originally transferred to Dookhanee and Hardeo, showing a portion coloured pink and containing one point zero seven four three hectares, being the remainder after three previous transfers of other portions of the land. In accordance with Regulation 25 (1) of the Land Surveyors' Regulations 1998, I certify that this plan represents the remaining portion.

Checked by .....  
Entered on .....

*Meela Mohammed*  
Trinidad and Tobago Land Surveyor

29th April 2015





1856/120