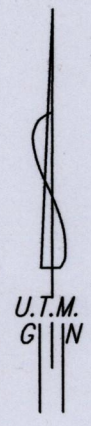
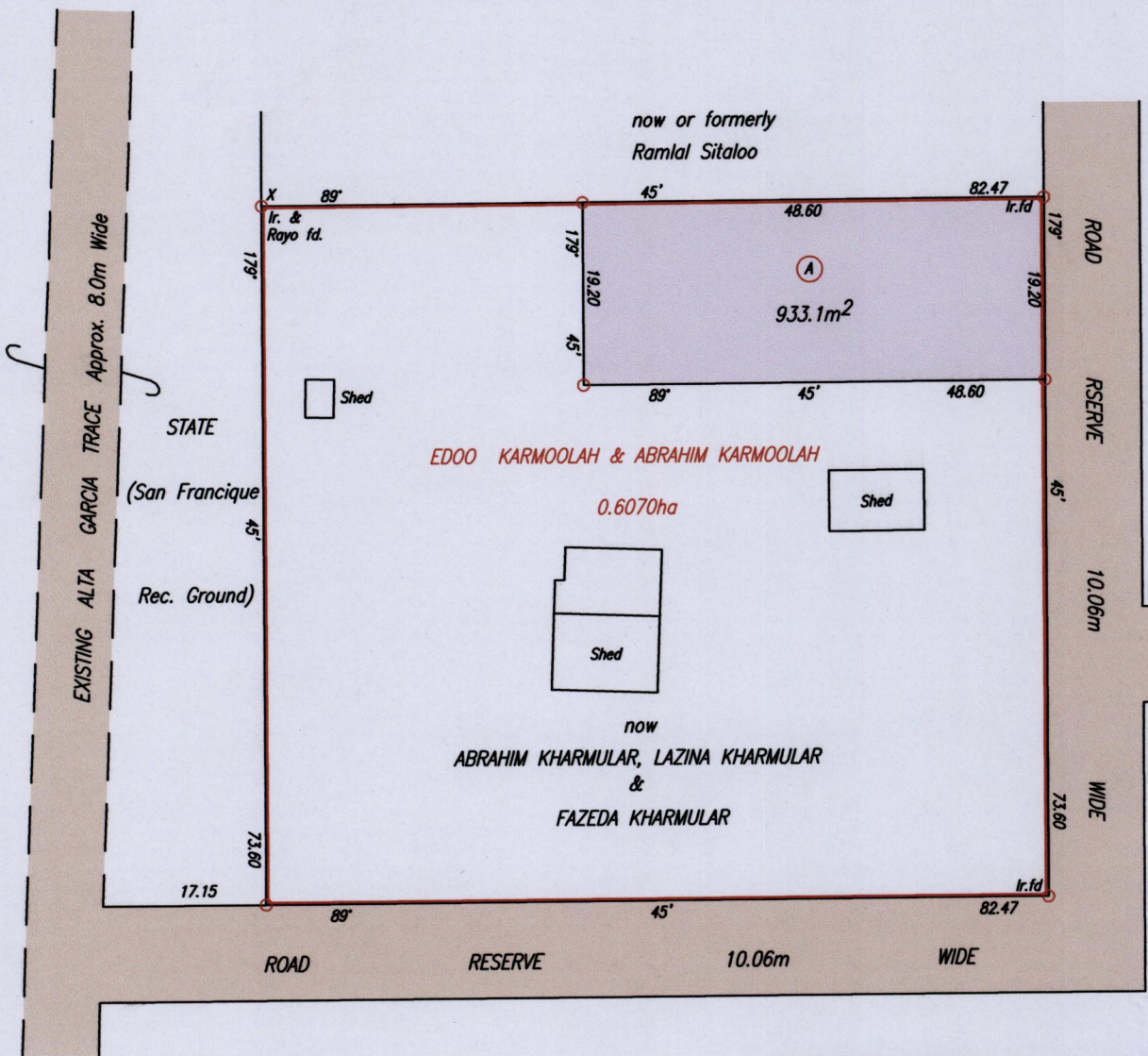


1656/19
1056

119

R.P.O. Vol. 115 Fol. 439
C.T. Vol. 2043 Fol. 389
Ref.: Bk. 1002 Fol. 14

Cadastral Sheet G.12.H. & L. 63E
4/a
Ward of Siparia
County of St. Patrick
San Francique



X : 666614mE, 1124906mN
(U.T.M. 20, WGS 84 (+/-5m))
Coordinates obtained from
handheld GPS.



Approved
[Signature]
Director of Surveys *[Signature]*

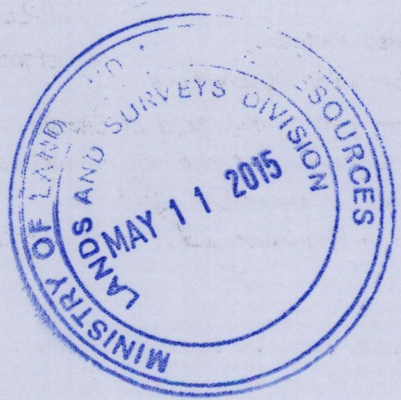
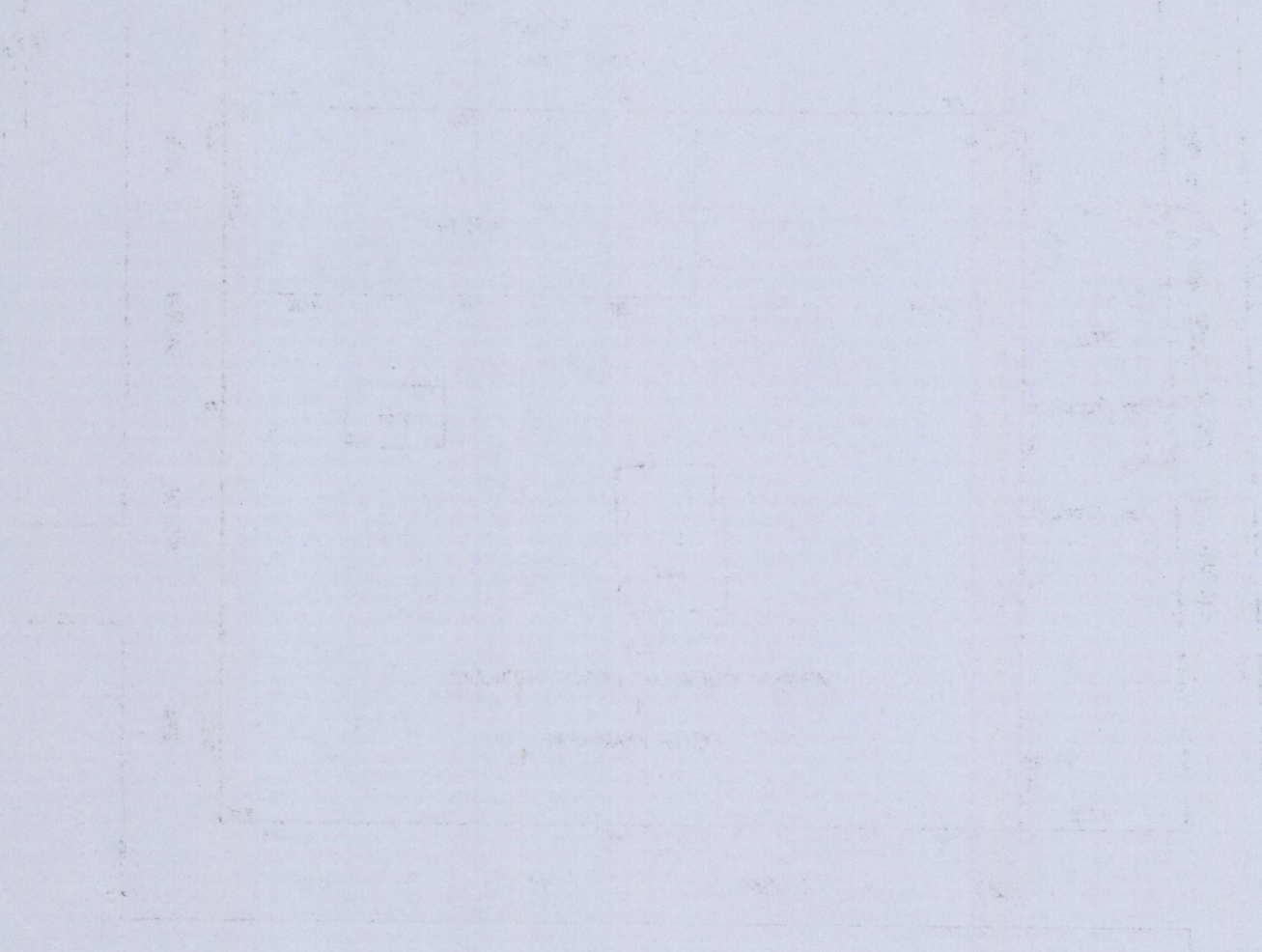
SCALE 1:750
Distances are in Metres

○ Denotes Iron put except otherwise stated.
Bearings are U.T.M. Grid based on Solar Observations.
PLAN of a Parcel of land coloured pink in the Ward of Siparia
Containing nine hundred and thirty three point one square metres.
Surveyed by me, with due authority, in December, 2013
Certified Correct in accordance with Regulation 25(1) of the Land Surveyors' Regulations 1998

Checked by *HR-19/05/15* *[Signature]*

Entered on Trinidad & Tobago Land Surveyor *7th May* 2015

Faint, illegible text at the top of the page, possibly a header or title.



1656/119