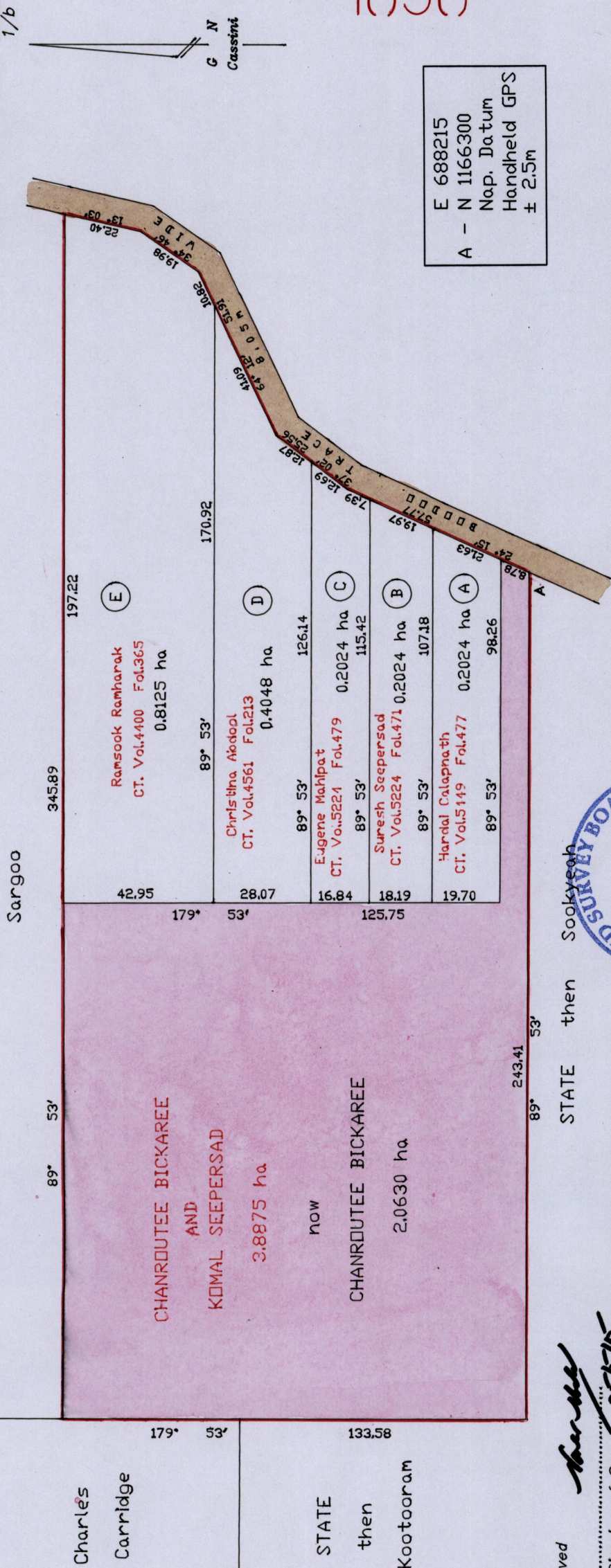


R.P.O. Vol. 590 Fol. 433  
 C.T. Vol. 3511 Fol. 215

REMAINING PORTION PLAN

Ward of San Rafael  
 County of St. George  
 Cadastral Sheet D.4.L. 34C  
 1/b



1656

118

E 688215  
 A - N 1166300  
 No.p. Datum  
 Handheld GPS  
 ± 2.5m

Sargoo

Charles  
 Carridge

STATE  
 then  
 Kootooram

CHANROUTEE BICKAREE  
 AND  
 KOMAL SEEPERSAD  
 3.8875 ha

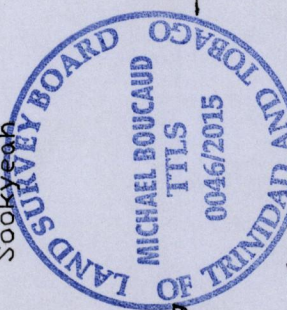
CHANROUTEE BICKAREE  
 2.0630 ha

42.95	179° 53'	345.89	197.22	(E)	Ramsook Ramharak CT. Vol.4400 Fol.365 0.8125 ha
28.07	89° 53'	170.92		(D)	Christina Medopal CT. Vol.4561 Fol.213 0.4048 ha
16.84	89° 53'	126.14		(C)	Eugene Mahapat CT. Vol.5224 Fol.479 0.2024 ha
18.19	89° 53'	115.42		(B)	Suresh Seepersad CT. Vol.5224 Fol.471 0.2024 ha
19.70	89° 53'	107.18		(A)	Hardal Calapnath CT. Vol.5149 Fol.477 0.2024 ha

Approved *[Signature]* Director of Surveys 25/5/15

SCALE 1/1500  
 Distances are in metres

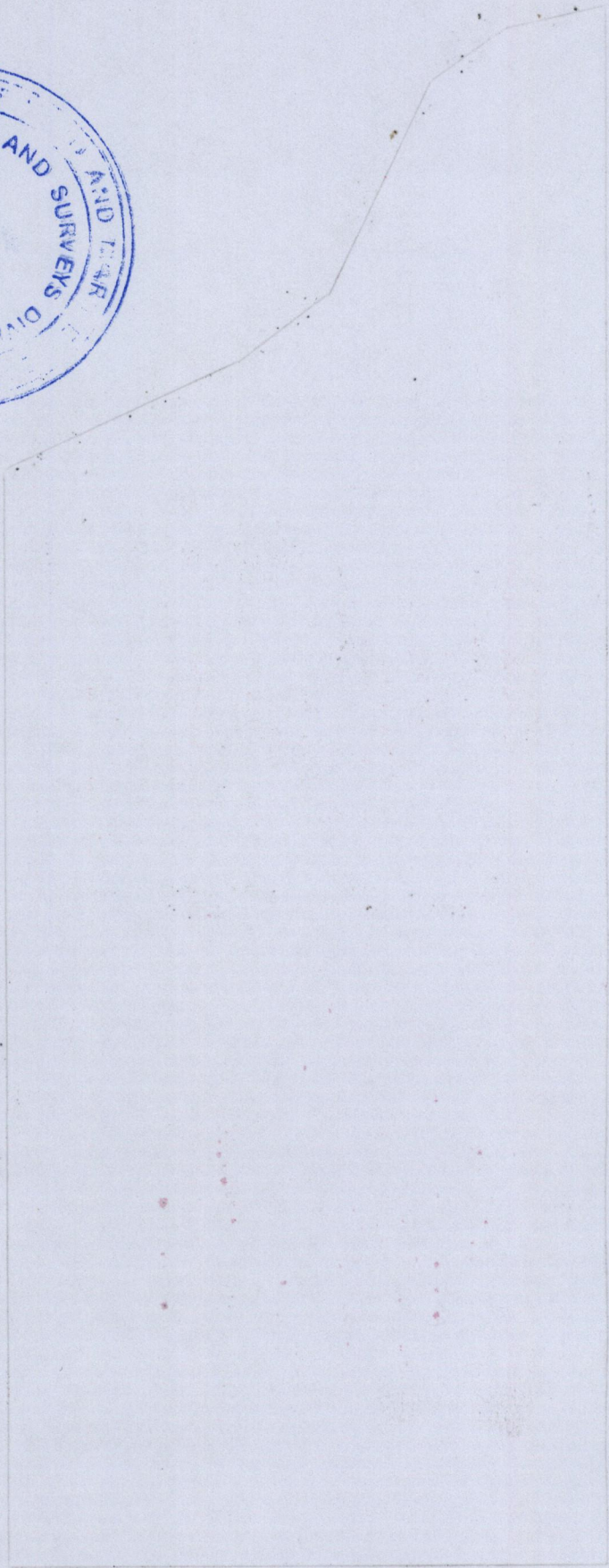
PLAN of three point eight eight eight seven five hectares originally granted to Chanroutee Bickaree showing a portion coloured pink and containing two point zero six three zero hectares being the remainder after 5 previous transfers of portions of the land in accordance with Regulation 25(1) of the Land Surveyors' Regulations 1998. I certify that this plan represents the remaining portion.



Checked by *[Signature]*  
 Entered *[Signature]* 15/11/2015  
 Trinidad & Tobago Land Surveyor

C.F. L&S. Bk.1233 Fol.97

211/9591



1656/1118