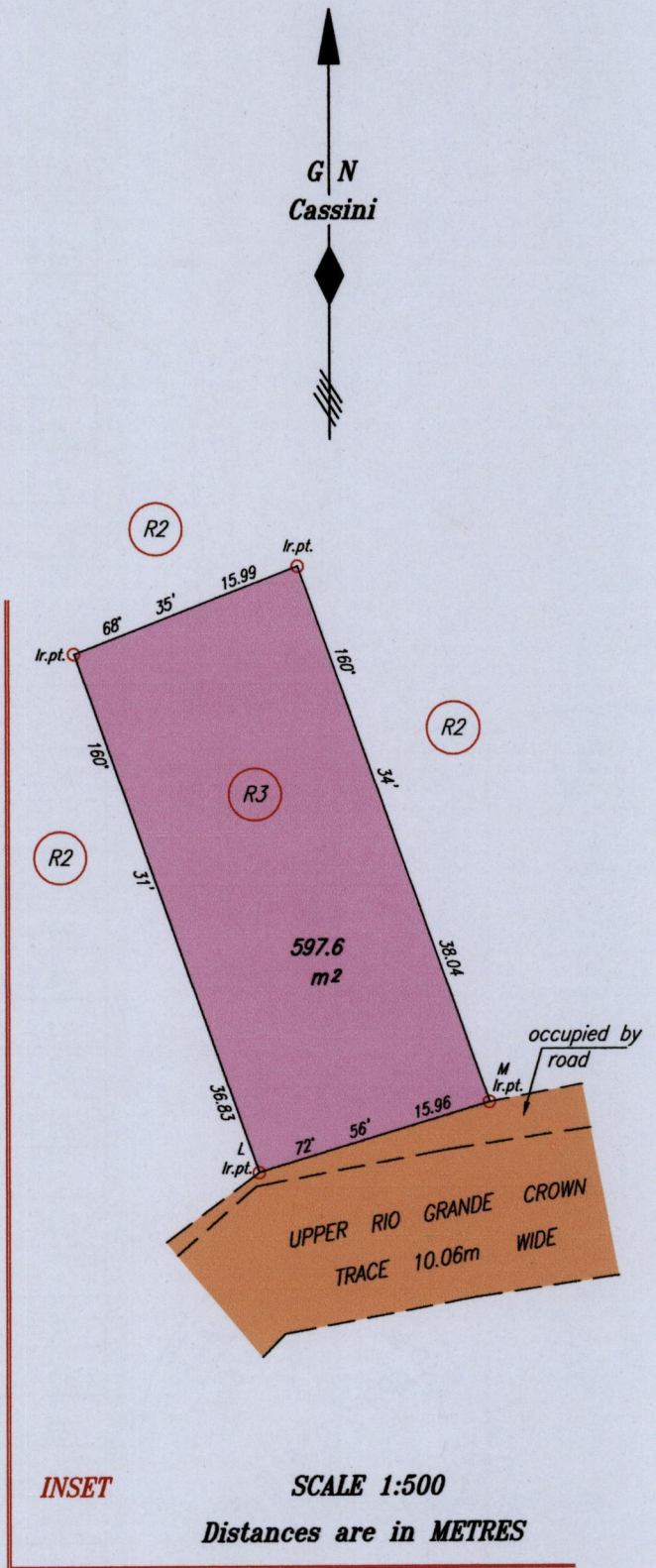
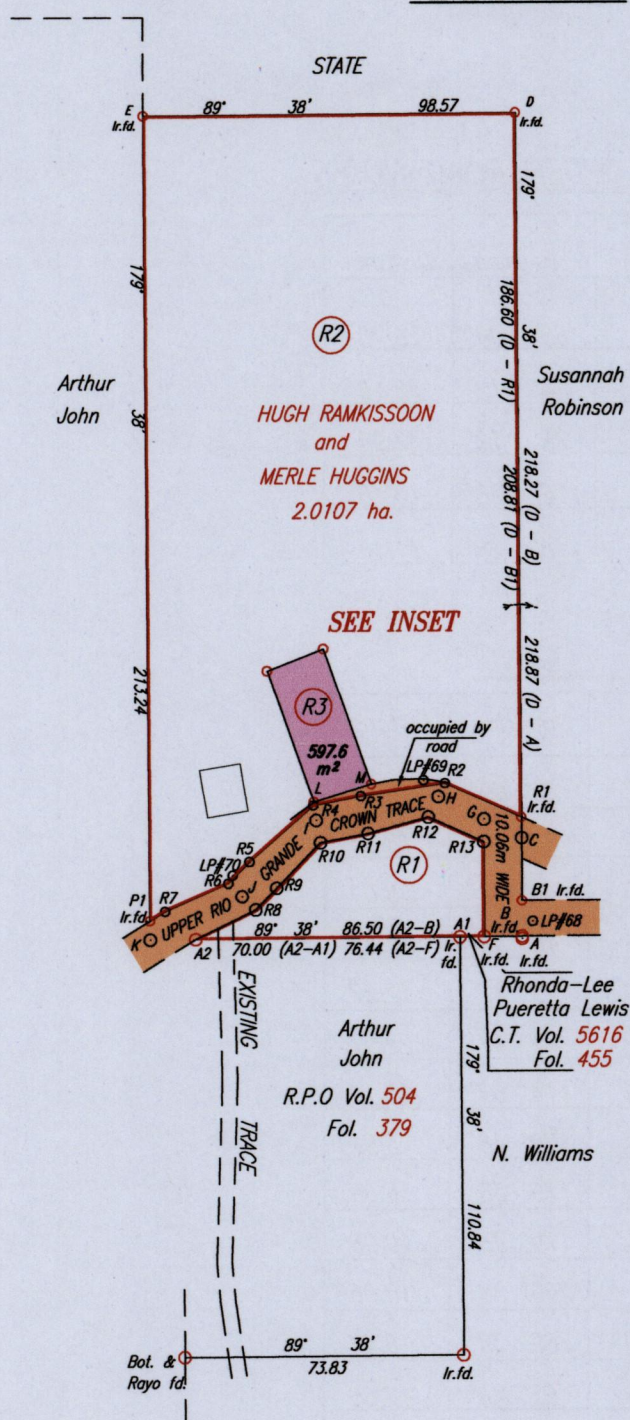


1656/115

1656

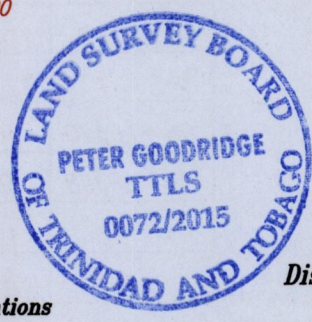
115

MATURA



Coordinates of A (Ir.f.d): 0710619mE, 1180887mN
 U.T.M. 20 WGS 84 (+/- 4.00m)
 G.P.S Direct Observation
 For Road Notes see S.O. 222/19 in Bk. 208 Fol. 200

Approved *[Signature]*
 Director of Surveys
 25/1/15



- Denotes Iron put except where otherwise stated
 - Denotes Peg put except where otherwise stated
- Bearings are Cassini Grid based on Solar Observations

SCALE 1:2000
 Distances are in METRES

PLAN of a Parcel of land coloured pink in the Ward of Matura
 Containing five hundred and ninety seven point six square metres
 Surveyed by me, with due authority, on 25th January 2014

Certified Correct in accordance with Regulation 25 (1) of The Land Surveyors Regulations 1998,

Checked by *[Signature]* 18/05/15 TILS

Entered on

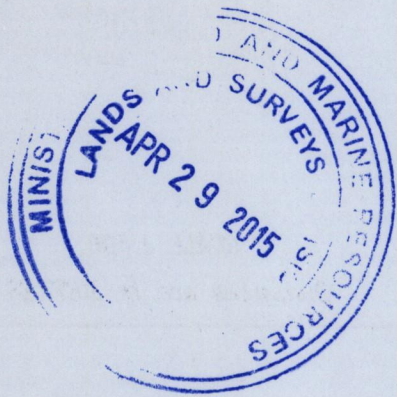
Trinidad & Tobago Land Surveyor
 C:\LESS 2014\TRINIDAD\RAMKISSOON, MERLE.dwg
 25th April 2015
 FILE NO: R061

SURVEY ORDER ROAD NOTES

<i>From To</i>	<i>Bearing</i>	<i>Distance</i>
K - J	65° 08'	26.75
J - I	44° 12'	28.16
I - H	79° 12'	32.99
H - G	116° 28'	13.48
G - C	116° 28'	11.16

LEGEND

<i>From - To</i>	<i>Bearing</i>	<i>Distance</i>
P1 - R7	58° 09'	4.67
R7 - R6	66° 10'	18.33
R6 - R5	44° 12'	8.04
R5 - R4	48° 38'	22.49
R4 - R3	79° 12'	12.87
R3 - R2	81° 17'	22.57
R2 - R1	114° 07'	22.17
R1 - C	179° 38'	5.52
C - B1	179° 38'	16.69
B1 - B	179° 38'	10.06
A - F	269° 38'	10.06
F - A1	269° 38'	6.44
A2 - R8	63° 46'	17.66
R8 - R9	44° 12'	8.04
R9 - R10	43° 55'	16.66
R10 - R11	79° 12'	12.87
R11 - R12	74° 55'	16.51
R12 - R13	114° 07'	16.10
R13 - F	179° 38'	25.21
R6 - LP#70	36° 29'	1.95
B - LP#68	34° 13'	4.82
R4 - L	13° 33'	0.96
R2 - M	269° 22'	19.47



1656/115