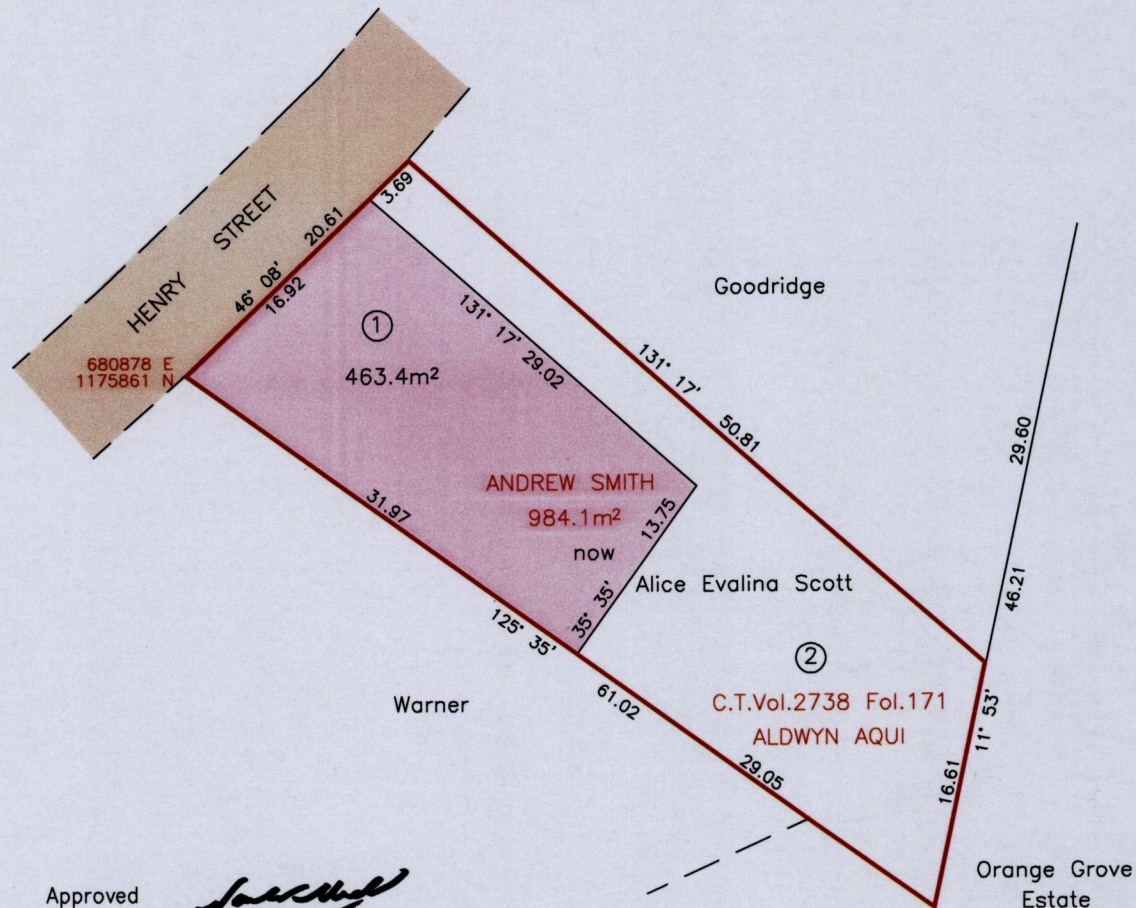
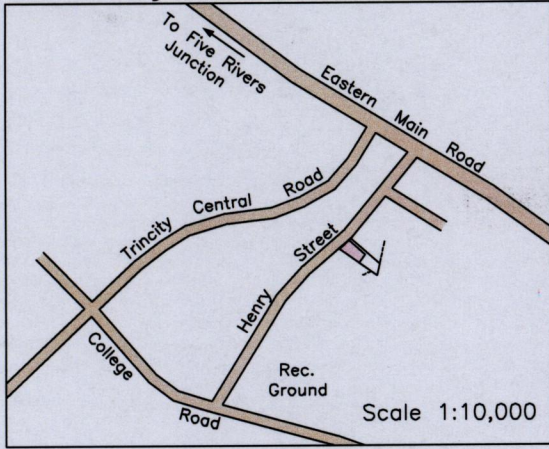


1656

114

Location Diagram



Approved *[Signature]*
Director of Surveys
[Signature]

SCALE 1:500
Distances are in metres

References:
Bk.1134 Fol.143
Bk.1137 Fol.9

Notes: Bearings are U.T.M. Grid based on Solar Observations
Coordinates obtained by Handheld GPS (UTM Zone 20, Naparima ± 5.0m)

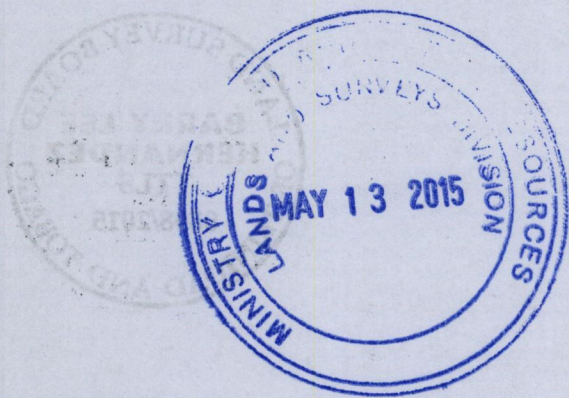


PLAN of nine hundred and eighty four point one square metres
Originally transferred to Andrew Smith, showing a portion coloured pink
and containing four hundred and sixty three point four square metres being the
remainder after one previous transfer of a portion of land

In accordance with Regulation 25(1) of the Land Surveyors Regulations 1998,
I certify that this plan represents the remaining portion.

Checked by *NW 19-5-2015*

Entered on *[Signature]* Trinidad and Tobago Land Surveyor, *12th May* 2015.



1656/114