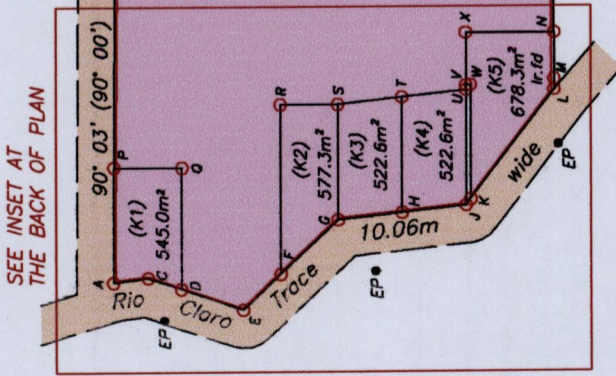
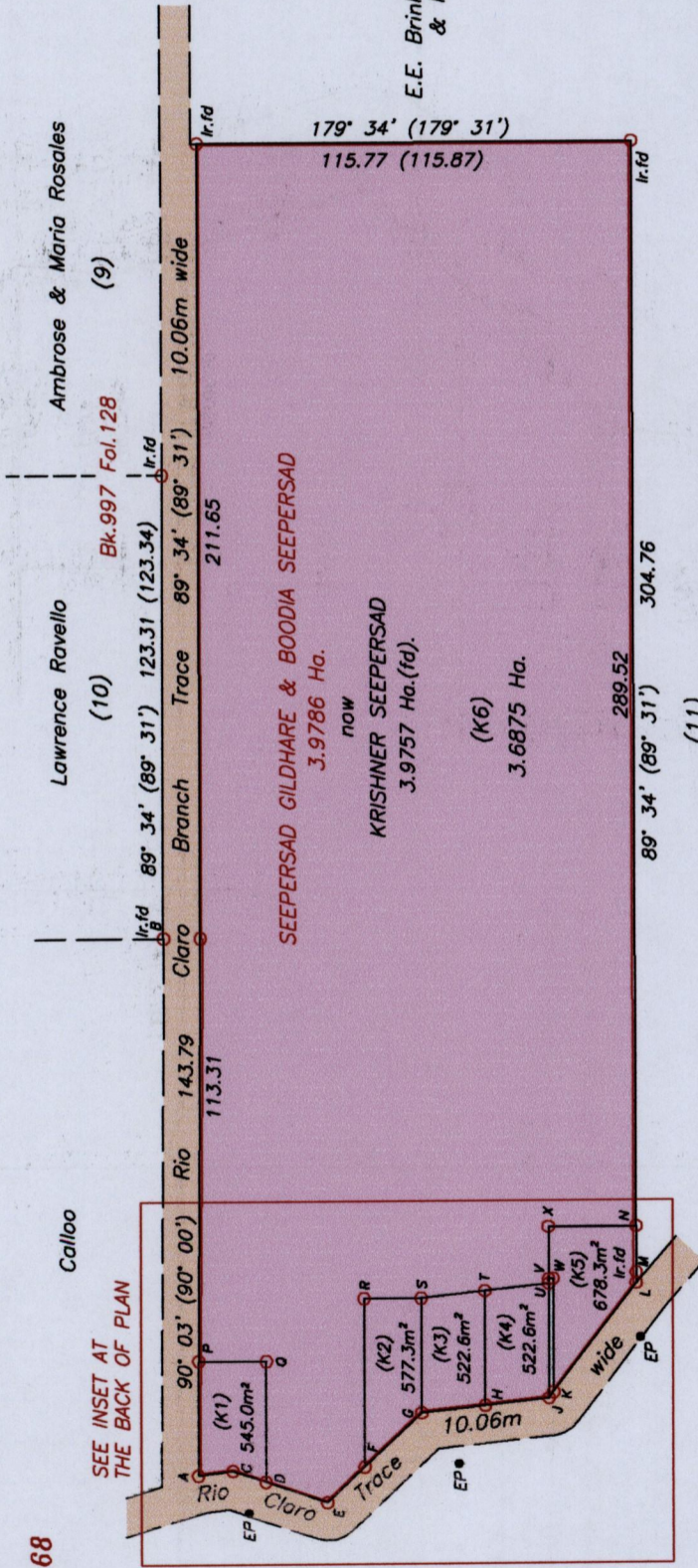
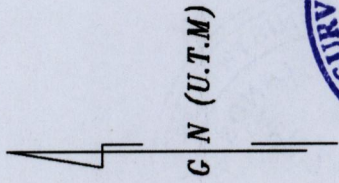


R.P.O Vol. 115 Fol. 563
 C.T. Vol. 1777 Fol. 177
 Ref: Plan C.D.68

Ward of Cocal
 County of Nariva
 Cadastral Sheet 55B H.2.D
 4/d

1656



(11)
 E.E. Brinkley, O.E. de Barry
 & R.C. Hobson

E.E. Brinkley, O.E. de Barry & R.C. Hobson

Handwritten signature
 Director of Surveys

A = N 1139111
 E = E 701951
 SCALE 1:2000
 Distances are in METRES

Note: U.T.M 20 Naparima (GPS +/- 3.0m)
 Denotes Iron put unless otherwise stated
 Bearings are U.T.M Grid based on solar observations
 To obtain Cassini Bearings add 18 minutes

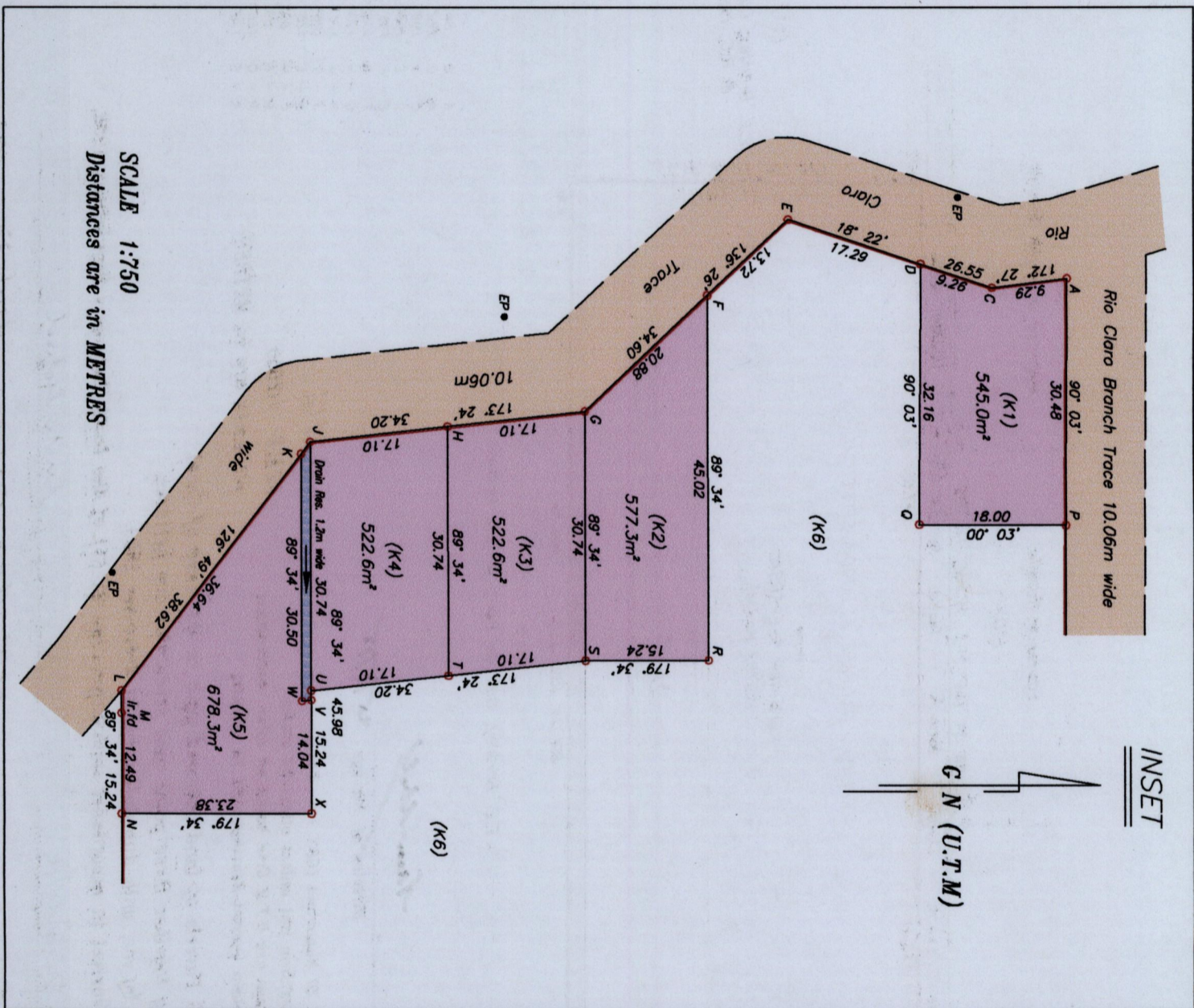
PLAN of 6 Parcels of land coloured pink in the Ward of Cocal.
 Containing together three point nine seven two one hectares.
 Surveyed by me, with due authority, in December 2009.
 Certified correct in accordance with Regulation 25 (1) of the Land Surveyors Regulations 1998.

Checked by... R-19/05/15
 Entered on...
 Approved...
 Director of Surveys
 E.E. Brinkley, O.E. de Barry & R.C. Hobson
 April 22 2015

Point	Bearing	Distance	Point	Bearing	Distance
A - B	86° 03'	144.06	S - T	173° 24'	17.10
A - C	172° 27'	9.29	T - U	173° 24'	17.10
A - D	198° 22'	9.26	U - V	89° 34'	1.20
C - D	198° 22'	17.29	V - W	173° 25'	1.21
D - E	136° 26'	13.72	V - X	89° 34'	14.04
E - F	136° 26'	20.88	X - N	179° 34'	23.38
F - G	173° 24'	17.10	A - P	90° 03'	30.48
G - H	173° 24'	17.10	D - O	90° 03'	32.16
H - J	126° 49'	1.98	F - R	89° 34'	45.02
J - K	126° 49'	36.64	G - S	89° 34'	30.74
K - L	89° 34'	2.75	H - T	89° 34'	30.74
L - M	89° 34'	12.49	J - U	89° 34'	30.74
M - N	180° 03'	18.00	K - W	89° 34'	30.50
P - O	179° 34'	15.24			
R - S					

113

1656/113



1656/113