

1656

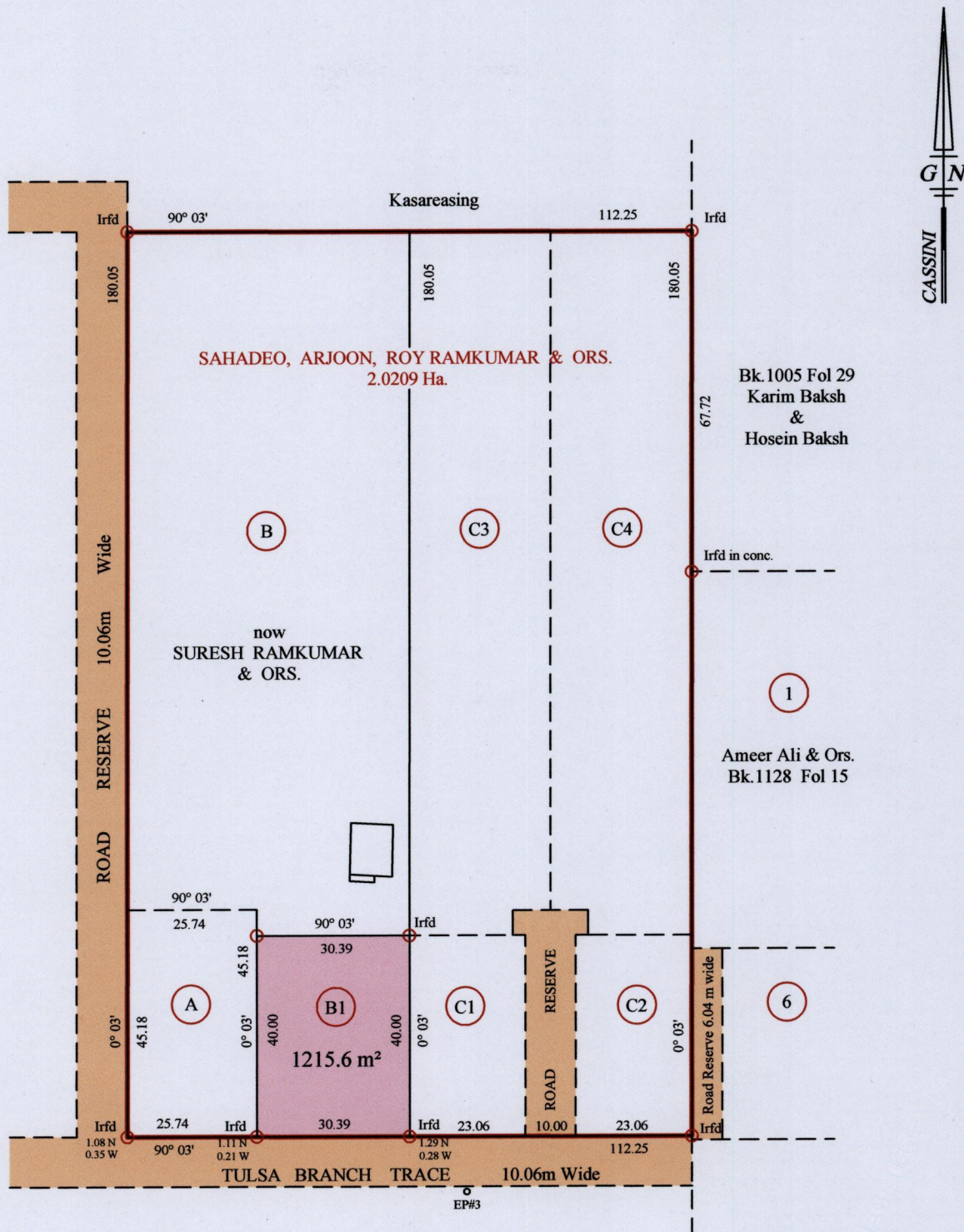
1083

RPO Vol 124 Fol 199  
CT Vol 3325 Fol 159

Cadastral Sheet G.13.E., 63E  
County of St. Patrick 2/c  
Ward of Siparia

Ref. Bk 396 Fol 113  
Bk 1652 Fol 32

PENAL



Approved

*[Signature]*

Director of Surveys

*17/5/11*

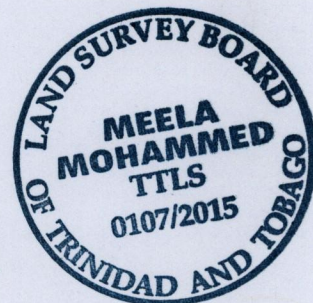
○ denotes Iron put except otherwise stated  
Bearings are Cassini Grid based on Solar Obs.  
Distances are in Metres  
SCALE 1/1250

PLAN of a parcel of land coloured pink in the Ward of Siparia  
Containing one thousand two hundred and fifteen point six square metres  
Surveyed by me, with due authority, in June 2014  
Certified correct in accordance with Regulation 25 (1) of the Land Surveyors' Regulations 1998.

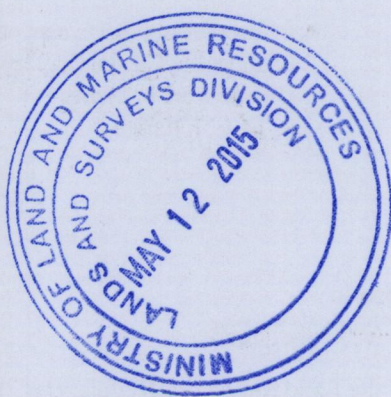
Checked by .....  
Entered on .....

*Meela Mohammed*  
Trinidad and Tobago Land Surveyor

*29th April 2015*







1656/108