

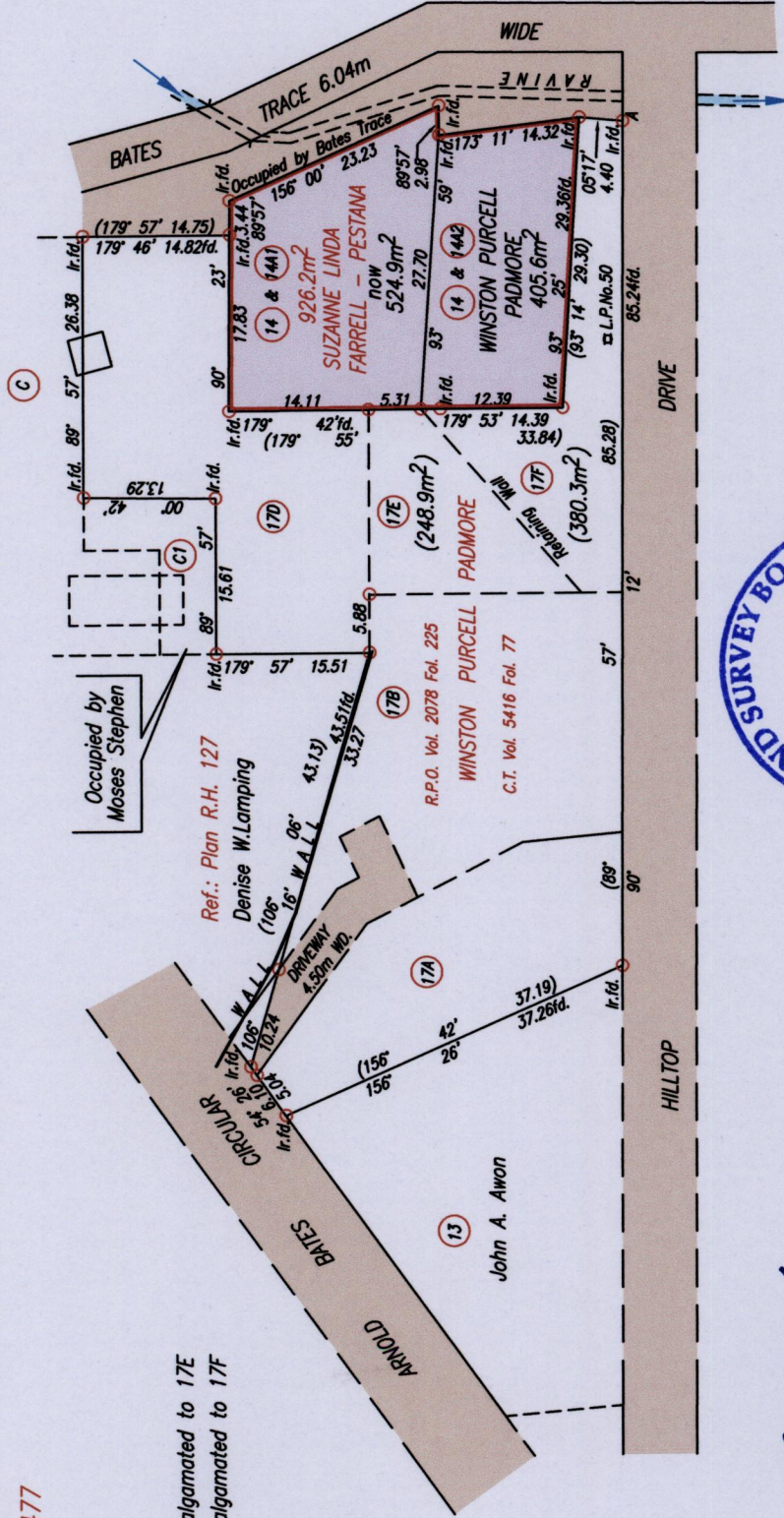
R.P.O. Vol. 2078 Fol. 225
 C.T. Vol. 5061 Fol. 477

Ref.: Bk. 1376 Fol. 57
 Ref.: JD 184
 Ref.: CM 111

Note : 14 & 14A1 to be amalgamated to 17E
 Note : 14 & 14A2 to be amalgamated to 17F

Cadastral Sheet B.18.I. 14D
 3/c
 Ward of Tacarigua
 County of St. George
Santa Margarita,
St. Augustine.

1656



A : 674900mE, 1178113mN
 (U.T.M. 20 WGS 84 (+/-5m)
 Coordinates obtained from
 handheld GPS.



Approved
 Director of Surveys

PLAN of 2 Parcels of land coloured pink in the Ward of Tacarigua
 Containing together nine hundred and thirty point five square metres.
 Surveyed by me, with due authority, in January, 2014
 Certify Correct in accordance with Regulation 25(1) of the Land Surveyors' Regulations 1998

Checked by
 Entered
 Winston Ramcharan
 Trinidad & Tobago Land Surveyor 2.3rd April 2015

SCALE 1:750
 Distances are in Metres
 ○ Denotes Iron put except otherwise stated.
 Bearings are Cassini Grid based on Solar Observations.

1015



1656/105