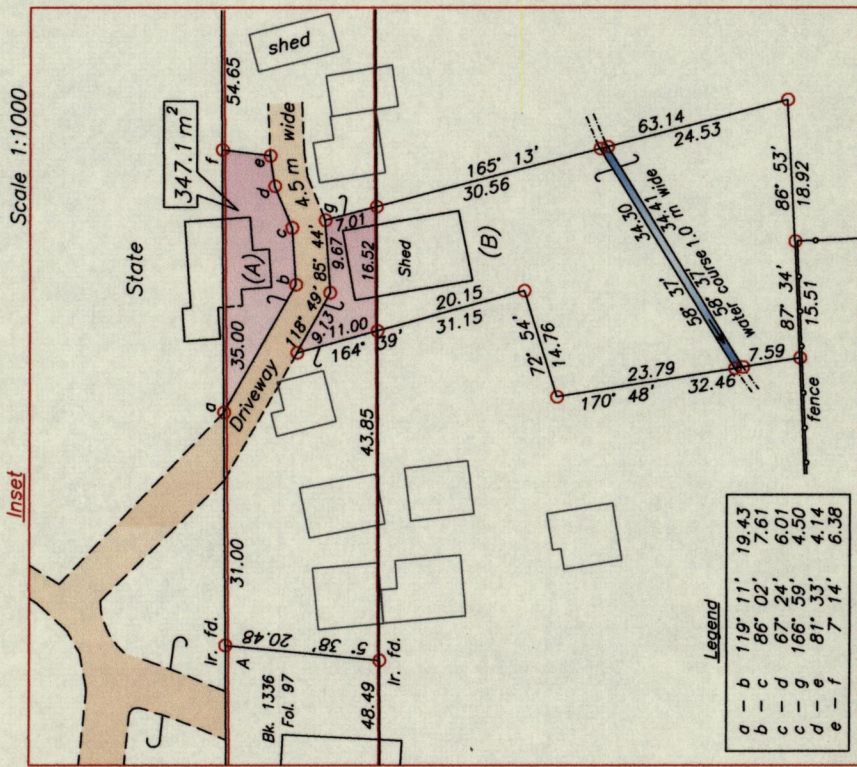


U.P.R.N.....

R.P.O. Vol. 51 Fol. 471

C.T. Vol. 3025 Fol. 119

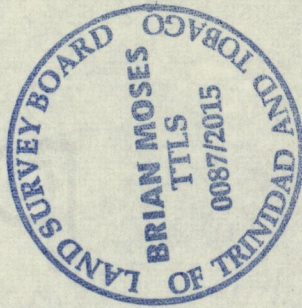
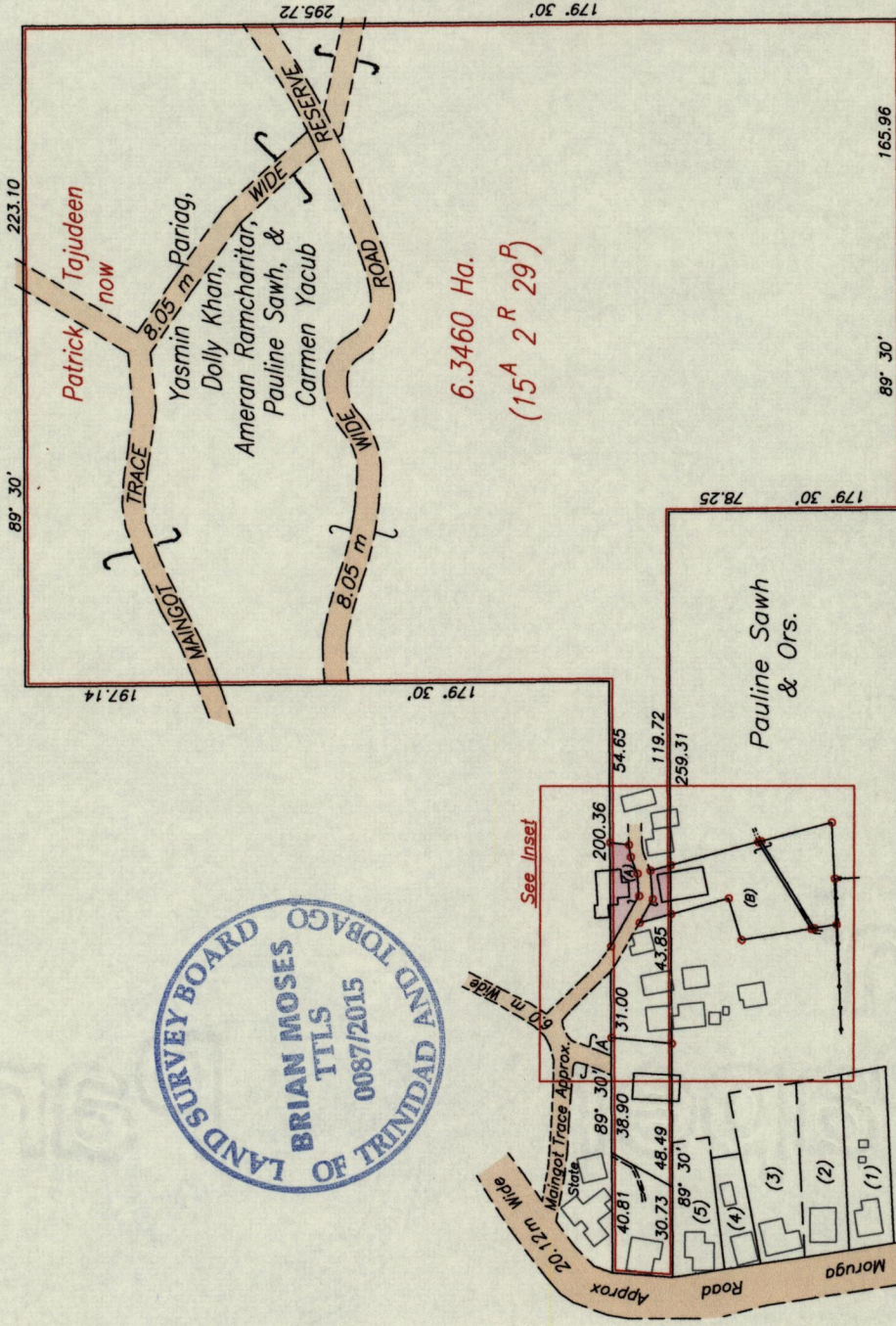


Approved .....  
 Director of Surveys

○ Denotes iron put unless otherwise stated  
 Bearings are U.T.M. Grid based on Solar observations

PLAN of a Parcel of land coloured pink in the Ward of Moruga  
 Containing three four seven point one square meters  
 Surveyed by me, with due authority, in June, 2009  
 Certified correct in accordance with Regulation 25 (1) of the Land Surveyors' Regulations 1998.

Cadastral Sheet G.20.H  $\frac{74C}{1/c}$   
 Ward of Moruga  
 County of Victoria



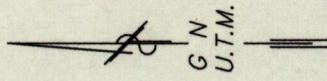
Name	Area
Mangot Trace (State)	0.2428 Ha (Resumed)

A - N 1120300  
 E 686623  
 Derived From Hand-Held GPS (+/-5 m)  
 UTM Zone 20 Naparima Co-ordinates

Reference  
 Bk. 1227 Fol. 134  
 Bk. 1336 Fol. 97  
 Bk. 762 Fol. 14  
 Bk. 315 Fol. 80

SCALE 1:2500  
 Distances are in METERS

Checked by .....  
 Entered on .....  
 Brian Moses  
 Trinidad & Tobago Land Surveyor (T.T.L.S.)  
 9<sup>th</sup> January ..... 2015

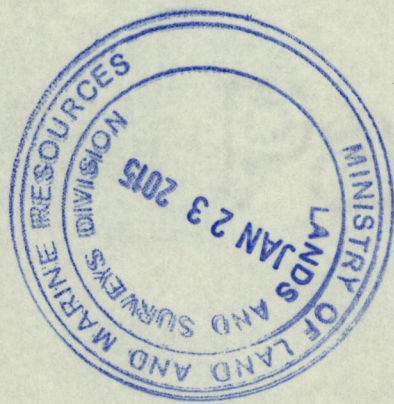


1656

10

01/9591





1656/10