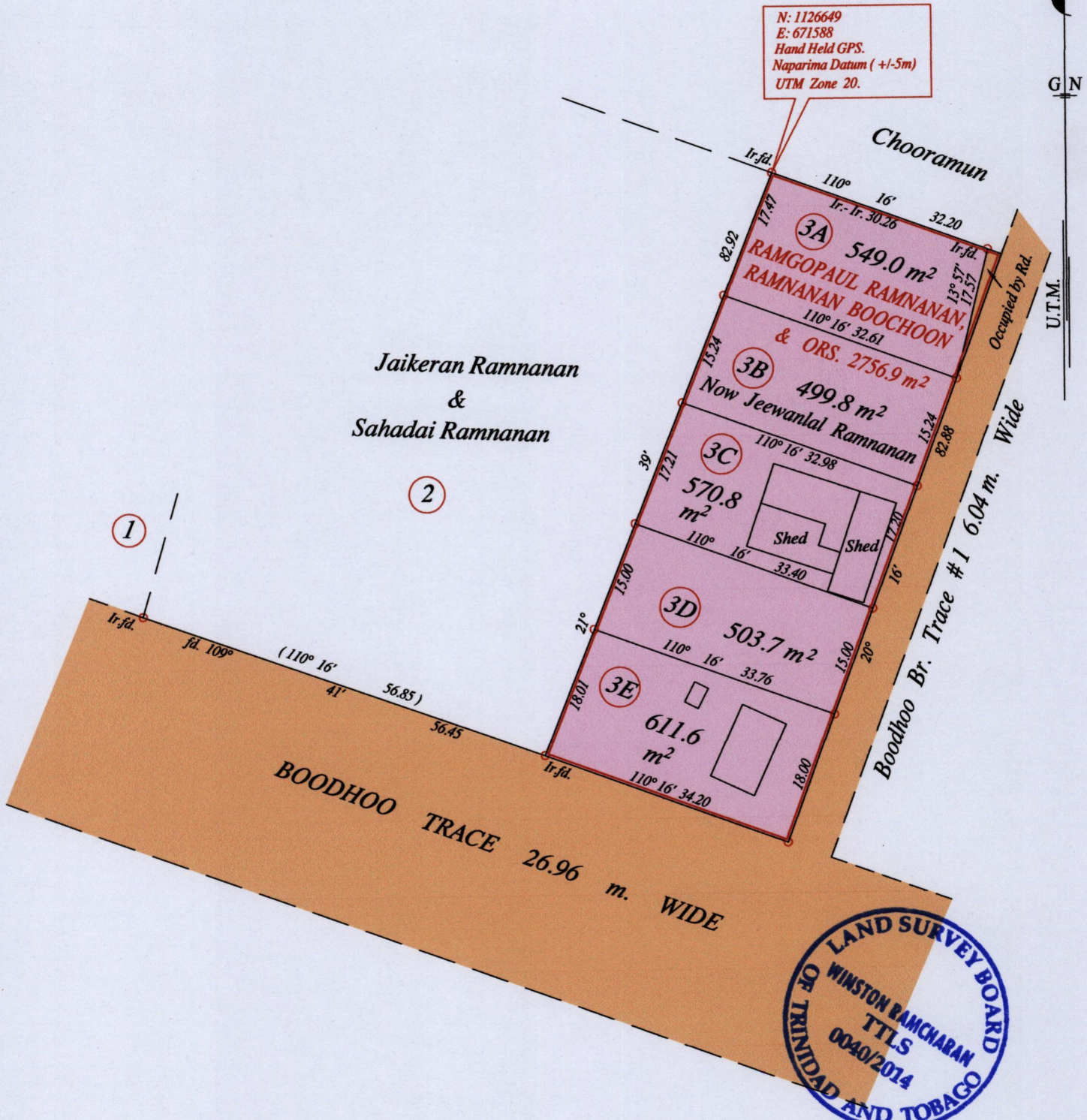


1655

96

R.P.O. Vol. 59 Fol. 303  
C.T. Vol. 2696 Fol. 479

Ward of Naparima  
County of Victoria  
Cadastral Sheet G 13 B, 63 F  
1/b



Approved *[Signature]*  
Director of Surveys 2/10/14

Vide Bk. 1124 fol. 221

o Denotes Iron put except stated otherwise.

SCALE : 1:750

Note: Bearings are U.T.M. grid based on solar observations

Distances are in metres

PLAN of 5 Parcels of land coloured pink in the Ward of Naparima

Containing together two thousand seven hundred and thirty four point nine square metres

Surveyed by me, with due authority, in January 2014

Certified correct in accordance with Regulation 25 (1) of the Land Surveyors Regulations 1998.

Checked by *[Signature]*

Entered on ..... Trinidad & Tobago Land Surveyor 19<sup>th</sup> July 2014