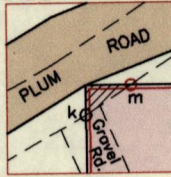


INSET Scale 1:1000

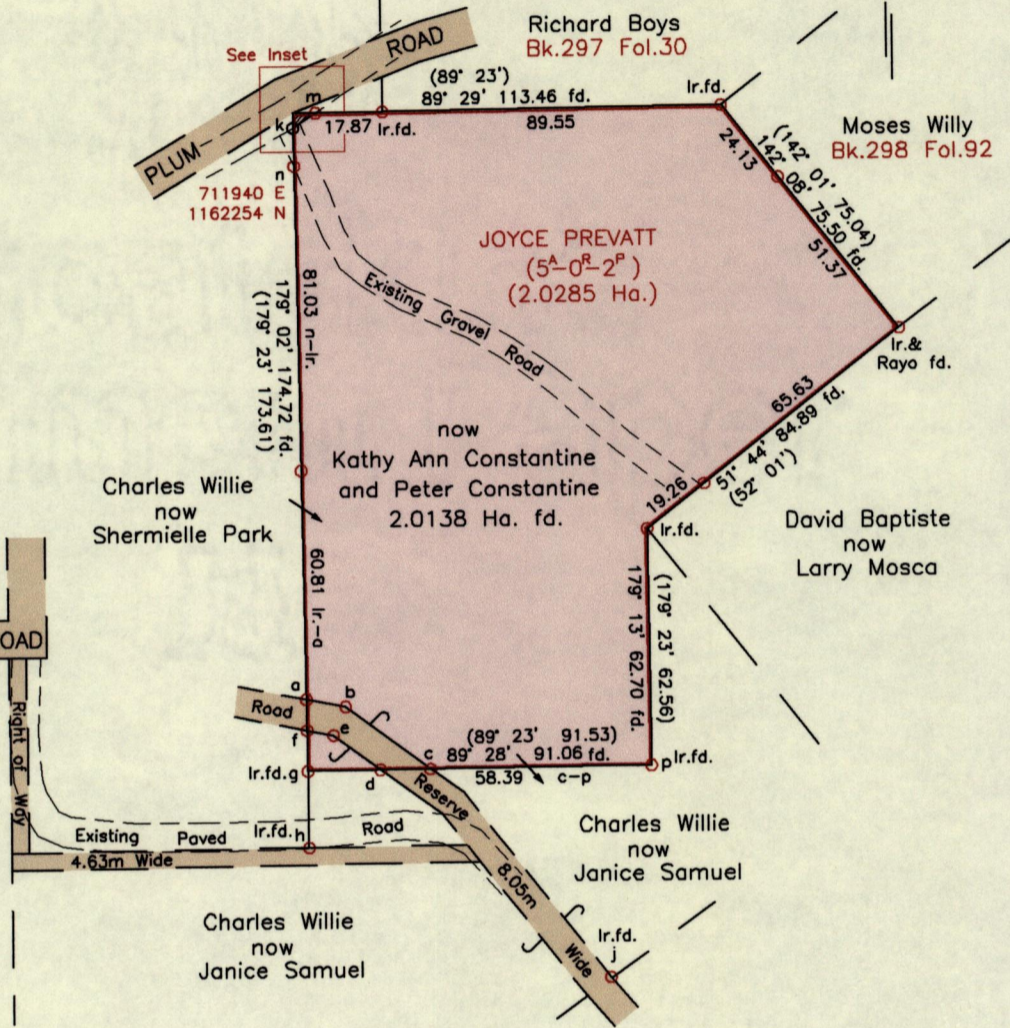
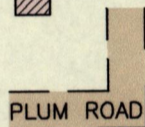


original location
 existing location

G N
 U.T.M.

From	To	Bearing	Distance
b	a	280° 58'	10.58
c	b	306° 23'	28.07
c	d	269° 28'	13.36
e	d	126° 23'	15.53
f	e	100° 58'	7.11
a	f	179° 02'	8.22
g	f	359° 02'	10.75
g	h	179° 24'	20.42
d	g	269° 28'	19.31
p	j	191° 02'	57.54
k	m	56° 39'	7.15
k	n	179° 02'	10.04

Legend
 Ravine
 11.7m² occupied by Plum Road



References:
 Bk.298 Fol.163
 PLAN M.J.29
 Bk.980 Fol.30
 Bk.298 Fol.91
 Bk.1033 Fol.274

Approved

Geoffrey Long
 Director of Surveys

8/17/14

SCALE 1:2000
 Distances are in metres

- Notes: ○ Denotes Ir.pt. unless otherwise stated
 ○ k = No Mark put
 Bearings are U.T.M. Grid based on Solar Observations
 Previous survey by Ganeshdath Ramcharitar in 2000 for Kaioom Mohammed
 Previous survey by Hugo Somarsingh in October 2007
 Coordinates obtained using handheld GPS (UTM Zone 20, Naparima ± 5.0m)

PLAN of a parcel of land coloured pink in the Ward of Turure
 Containing two point zero one three eight hectares
 Surveyed by me, with due authority, in March 2013

Certified Correct in accordance with Regulation 25(1) of the Land Surveyors Regulations 1998.

Checked by *Geoffrey Long*

Entered on Trinidad and Tobago Land Surveyor, 10th June 2014.

