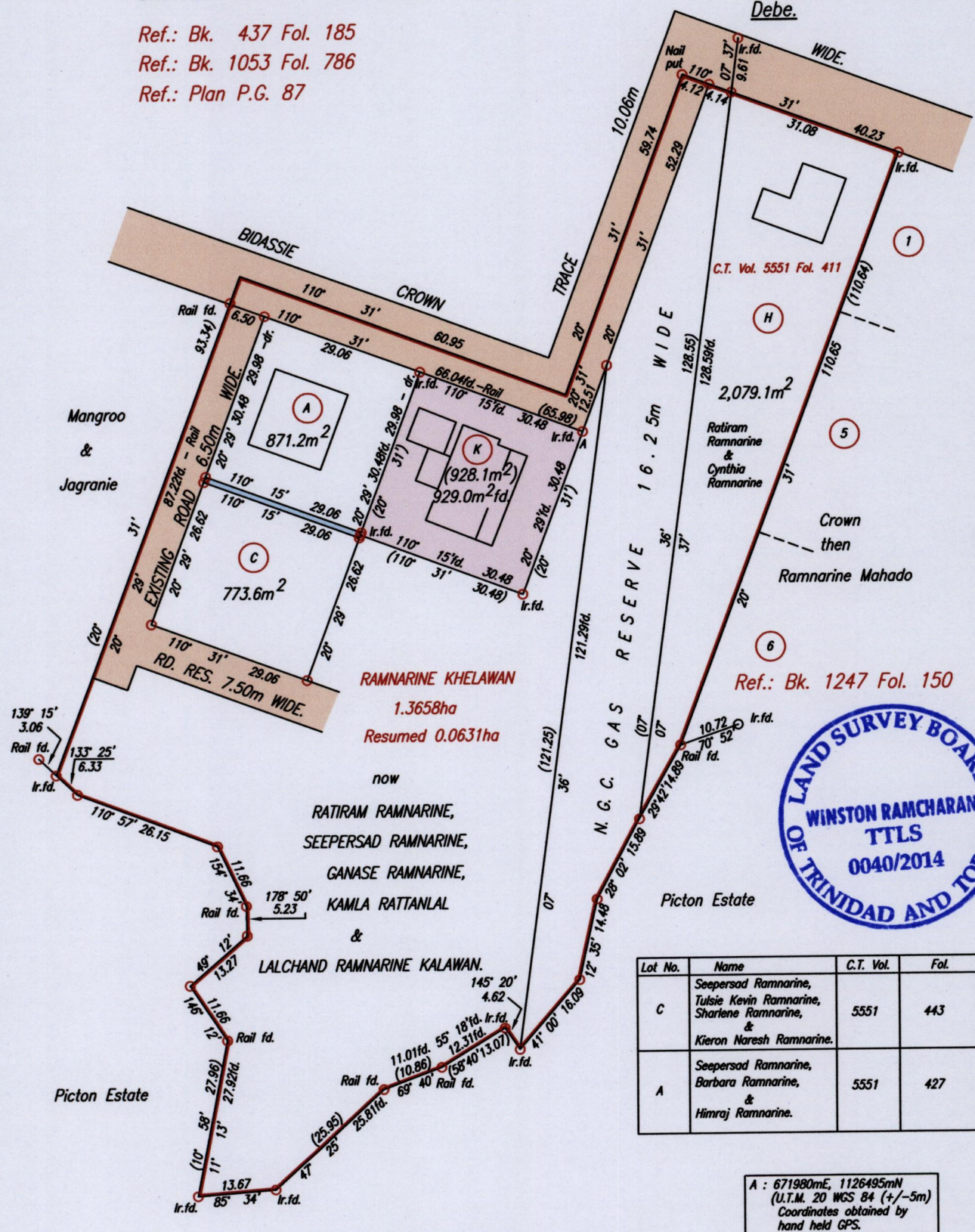


Cadastral Sheet G.13.C. 63F/2/c  
Ward of Naparima  
County of Victoria  
Debe.

R.P.O. Vol. 308 Fol. 629  
C.T. Vol. 2427 Fol. 219  
Ref.: Bk. 437 Fol. 185  
Ref.: Bk. 1053 Fol. 786  
Ref.: Plan P.G. 87



Approved *[Signature]*  
Director of Surveys *[Signature]*  
Denotes Drain Reserve 1.00m Wide.

SCALE 1:1000  
Distances are in metres

○ Denotes Iron put except where otherwise stated  
Bearings are Cassini Grid based on Solar Observations  
PLAN of a Parcel of land coloured pink in the Ward of Naparima  
Containing nine hundred and twenty nine point zero square metres  
Redefined by me, with due authority, in April, 2003 & June, 2014  
Certified Correct in accordance with Regulation 25 (1) of the Land Surveyors' Regulations 1998

Checked by *[Signature]*  
Entered on *[Signature]* Trinidad & Tobago Land Surveyor. 17<sup>th</sup> September 2014.