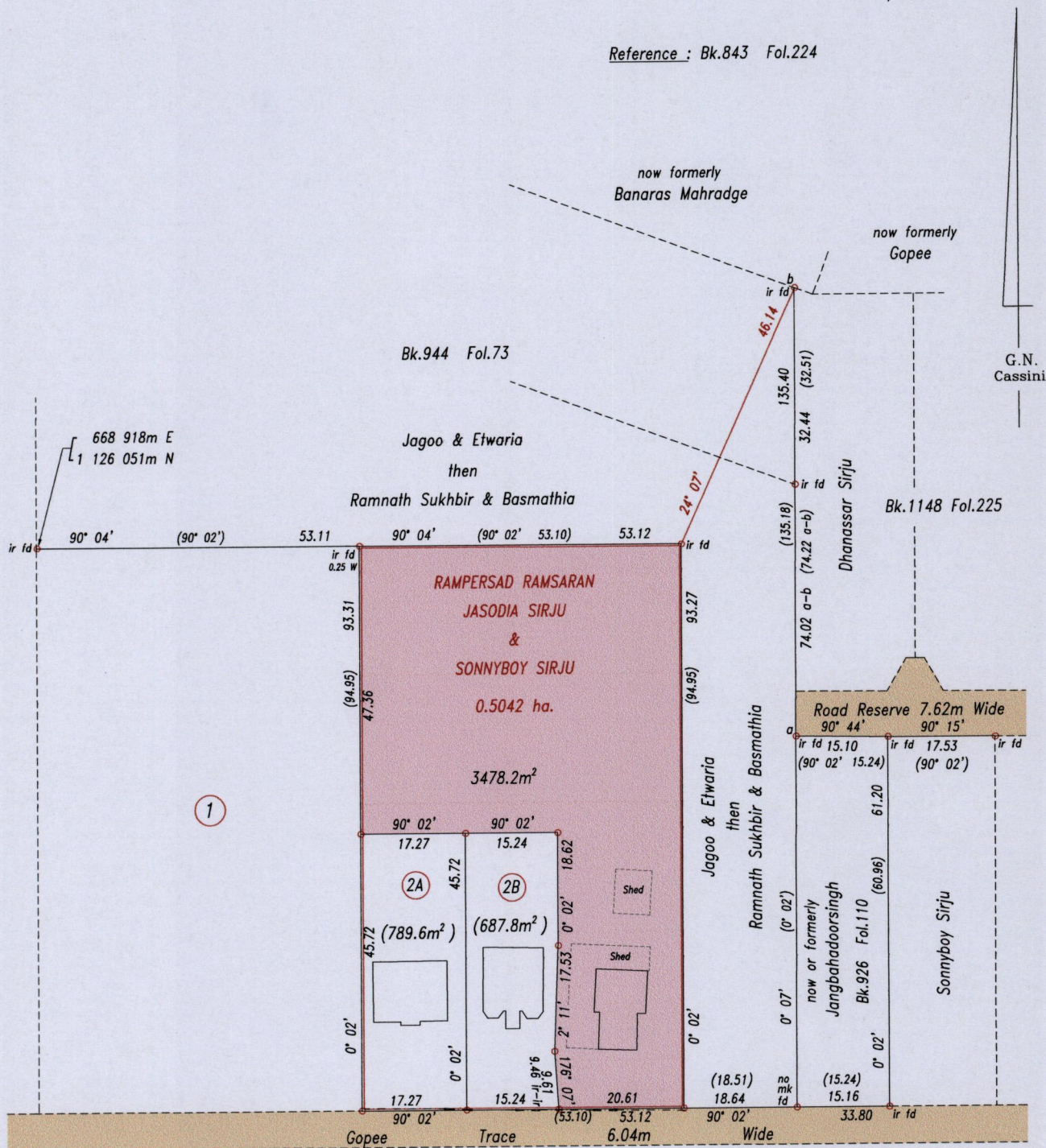


R.P.O. Vol. 88 Fol. 109  
C.T. Vol. 5388 Fol. 289  
U.P.I.N. No.:

Ward of Siparia  
County of St. Patrick  
Cadastral Sheet G.13.F. 63F  
1/c

Reference : Bk.843 Fol.224



Approved

Director of Surveys

*[Signature]*  
8/9/14

Coordinate Information
Source: GPS (Hand Held)
Error Statement: +/- 5m
Datum: Naparima, UTM (Zone 20).

SCALE 1: 1000

Distances are in metres

Bearings are Cassini Grid based on Solar Observations

o Denotes iron put except otherwise stated

PLAN of a parcel of land coloured pink in the Ward of Siparia  
Containing three thousand four hundred and seventy eight point two square metres  
Surveyed by me, with due authority, in June & October 2013

Certified Correct in accordance with Regulation 25(1) of the Land Surveyors' Regulations 1998.

Checked by .....  
Entered .....

*L.A. Riplead*  
Trinidad & Tobago Land Surveyor 2/9/2014

