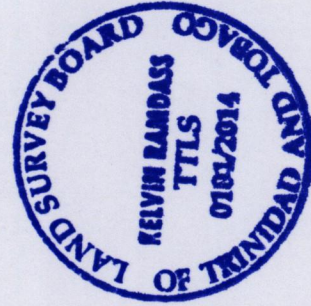


Ward of Savana Grande
 County of Victoria
 Cadastral Sheet G.9.L 64B.
 1/c

At Station (A)
 E 0680561
 N 1130967
 Reading taken with
 Handheld G.P.S.
 U.T.M. Zone 20
 WGS84
 ± 5 m.

G. N.
 U.T.M.

R.P.O. Vol.31 Fol. 633
 C.T. Vol. 4921 Fol. 463



Vide Bk. 1262 fol. 47
 Vide Bk. 1119 fol. 80

a - b	01°	16'	18.02	h - i	269°	24'	19.04
b - c	168°	54'	4.62	i - j	271°	49'	8.69
c - d	125°	02'	4.43	j - k	307°	48'	3.96
d - e	127°	48'	5.99	k - L	305°	02'	2.07
e - f	91°	49'	11.09	L - m	01°	16'	18.37
f - g	89°	24'	18.41				

Vide Bk. 325 fol. 81
 Vide Bk. 1224 fol. 167

SCALE : 1:2000

Distances are in metres

PLAN of 5 Parcels of land coloured pink in the Ward of Savana Grande

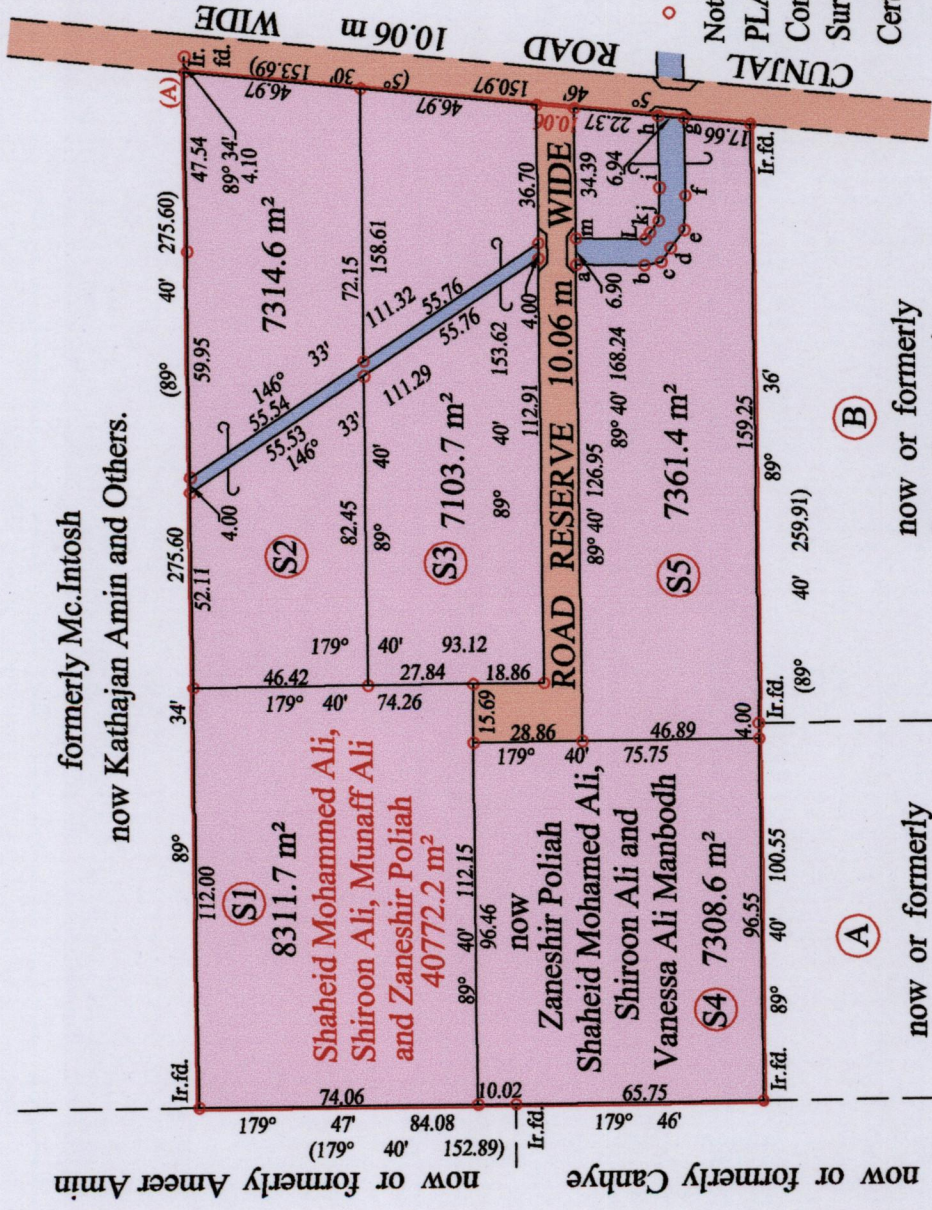
Containing together thirty seven thousand four hundred point zero square metres

Surveyed by me, with due authority, in January 2014

Certified Correct in accordance with Regulation 25(1) of the Land Surveyors Regulations 1998

Checked by

Entered on Trinidad & Tobago Land Surveyor



Approved
 Director of Surveys

Denotes Iron put except stated otherwise.

Note: Bearings are U.T.M. grid based on solar observations

now or formerly
 Rena Roopnarine

now or formerly
 Joseph Ramoutar