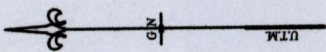
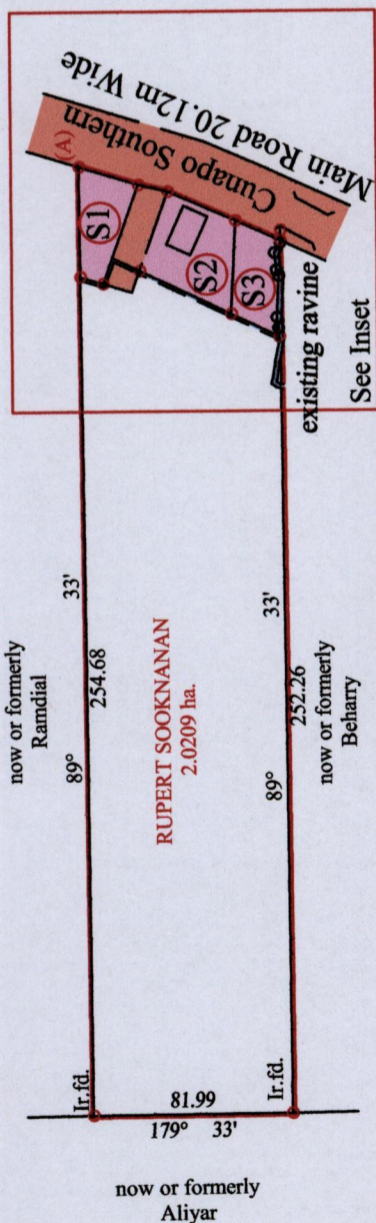


Ward of Charuma
County of Nariva
Cadastral Sheet E.21.F. 55 B
1/a



R.P.O. Vol. 583 Fol. 199
C.T. Vol. 3240 Fol. 479



Line	Bearing	Distance
a - b	86° 40'	2.84
b - c	81° 23'	3.46
d - e	66° 17'	2.11
e - f	84° 47'	5.73
f - g	119° 26'	3.92
g - h	92° 50'	0.59
h - j	89° 33'	3.47
k - m	193° 36'	10.05

At Station (A)
E 0697958
N 1143356
Reading taken with
Handheld G.P.S.
U.T.M. Zone 20
Naparima
± 5 m.

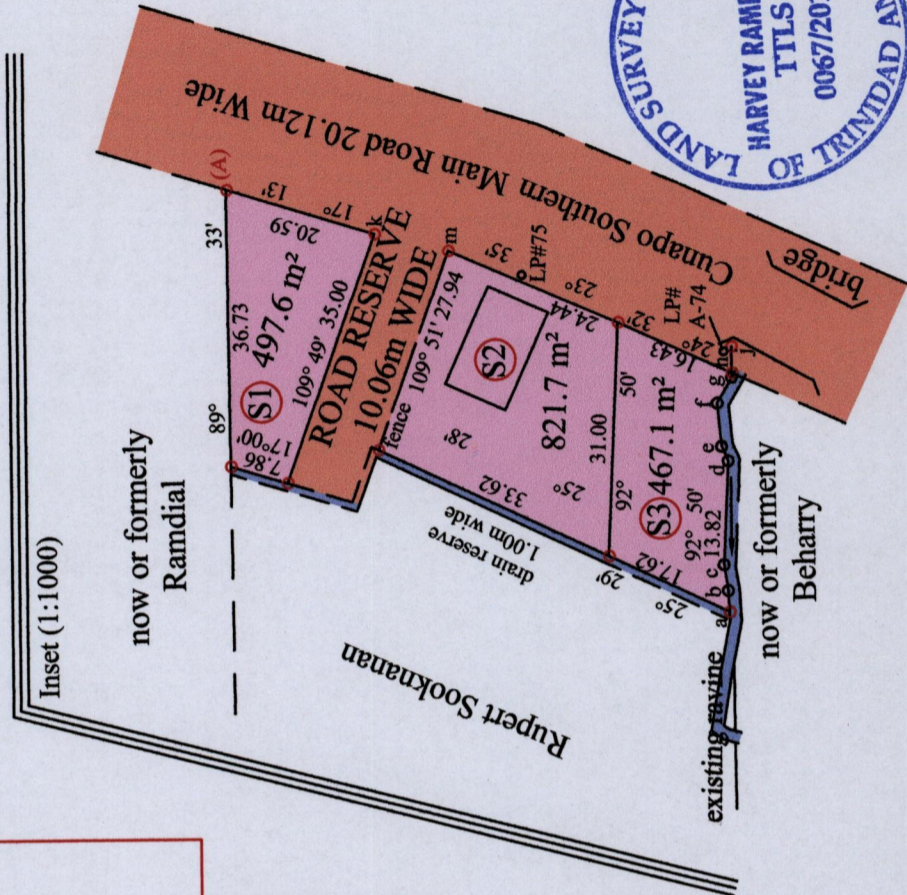
Approved
Director of Surveys 30/6/14

- o Denotes no mark put
- o Denotes Iron put except stated otherwise.

Note: Bearings are U.T.M. grid based on solar observations Distances are in metres
PLAN of 3 Parcels of land coloured pink in the Ward of Charuma
Containing together one thousand seven hundred and eighty six point four square metres
Surveyed by me, with due authority, in January 2013
Certified Correct in accordance with Regulation 25(1) of the Land Surveyors Regulations 1998

Checked by
[Signature]

Entered on Trinidad & Tobago Land Surveyor 18.06.2014



SCALE : 1:2500