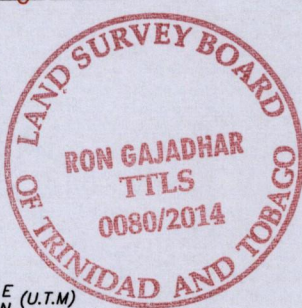
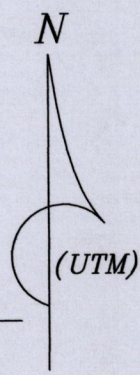
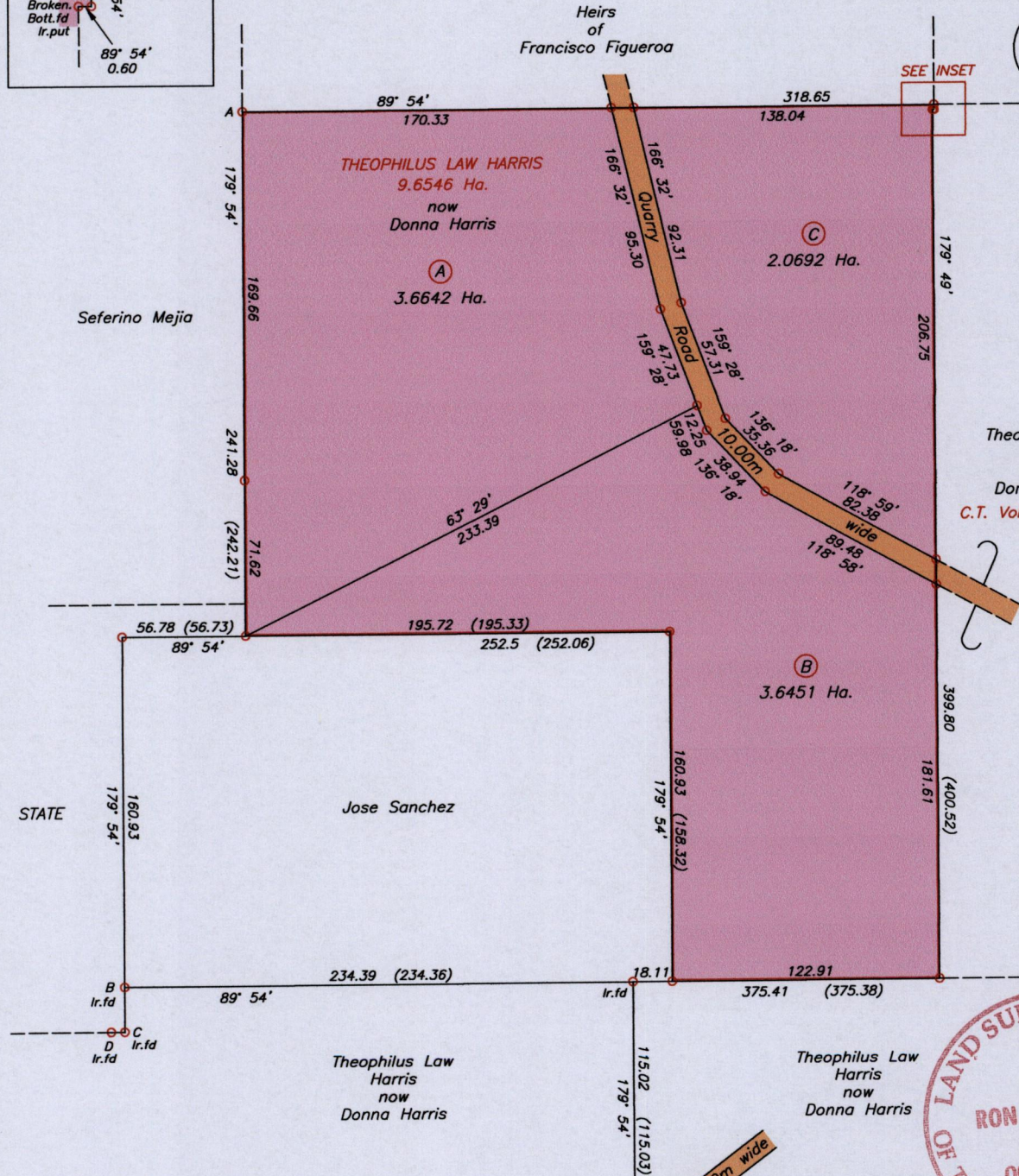
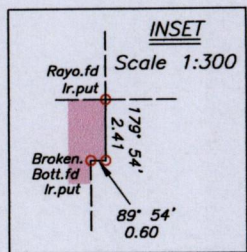


U.P.R.N.....
 R.P.O. Vol. 1 Fol. 17
 C.T. Vol. 1638 Fol. 367
 Address - Quarry Road,
 Erin.

Ward of Erin
 County of St. Patrick
 Cadastral Sheet F.20.N. $\frac{72E}{1/b}$



Approved.....
[Signature]
 Director of Surveys 11/14

A = 648144 E (U.T.M)
 1116289 N (U.T.M)

Ref :- Bk.1256 Fol.89
 Bk.436 Fol.135
 Plan C.A.61

Legend
 B - C 180° 00' 20.51 (179° 54' 20.52)
 C - D 269° 52' 6.24 (269° 54')

SCALE 1:3000
 Distances are in metres

Note - UTM (Nap-Zone 20) Coordinates obtained from hand held GPS receiver + 5.00m

o Denotes Iron put except stated otherwise
 Note: Bearings are U.T.M. grid based on solar observations

Plan of 3 Parcels of land coloured pink in the Ward of Erin.
 Containing together nine point three seven eight five hectares.
 Surveyed by me, with due authority, in November 2013.
 Certified correct in accordance with Regulation 25(1) of the Land Surveyors' Regulations 1998.

Checked by *HR -04/09/14*

Entered on..... *23.06.2014* Trinidad & Tobago Land Surveyor.....